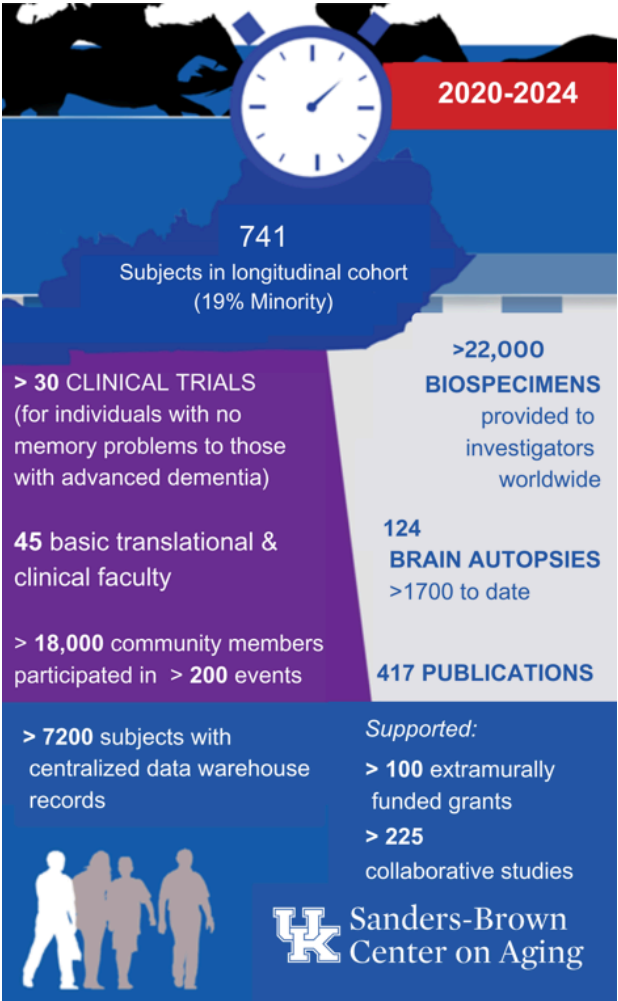


We promote healthy brain aging through:

- Research
- Education/Outreach
- Clinical Programs

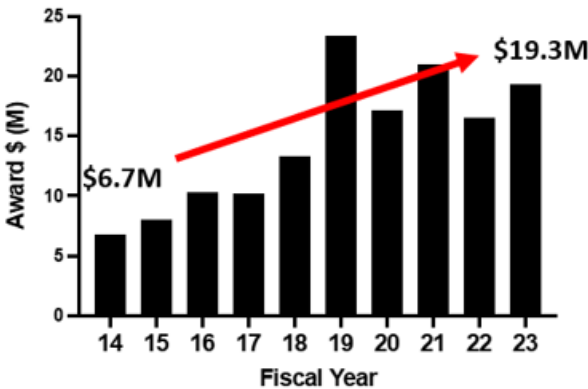
Our exceptional contributions to the science and promotion of healthy brain aging are a direct result of collaboration, integration, and interdependence.



“Recognized by continued federal funding from the National Institutes of Health, the Sanders-Brown Center on Aging Alzheimer’s Disease Research Center is one of the University’s outstanding centers of international excellence. As global experts in their field, our faculty researchers are committed to discovering solutions to many of society’s greatest medical mysteries and challenges.”

Dr. Eli Capilouto, President
University of Kentucky

Increases in Grants & Contracts to SBCoA Faculty
12.5% Compound Annual Growth Rate



To find out more or to receive services, please call 859-323-5550.
<https://medicine.uky.edu/centers/sbcoa>



Facebook
Twitter



OUR MISSION

The mission of the Sanders-Brown Center on Aging (SBCoA) is to enable healthy brain aging for all adults in Kentucky and beyond.

WHAT WE DO

We focus on translational research/ medicine.





Colonel Harland Sanders, John Y. Brown, Jr., and John Y. Brown, Sr. cut the ribbon to open the Sanders-Brown Center on Aging.

September 17, 1979

MAJOR RESEARCH THEMES

Advanced old age and early disease changes

- Established, large longitudinal cohort of cognitively normal elders
- Short postmortem interval, well-characterized biospecimens
- Clinical-neuropathological correlations
- Deep clinical, biomarker, genetic, and post-mortem phenotyping

Risk factors and disease mechanisms

- Down syndrome cohort
- Neuroinflammation
- Cerebrovascular and metabolic mechanisms
- Misfolded proteins

AD mimics, mixed pathology, and co-morbidities

- LATE
- Synucleinopathy
- Primary age-related tauopathy
- Vascular contributions to cognitive impairment and dementia

Bench to bedside clinical translational research

- AD genetics to pharmacological agents
- Therapies for MCI due to cerebrovascular disease
- Inflammation and metabolic stress
- Novel imaging, fluid, and digital biomarkers
- Inappropriate medications
- Personalized medicine
-

Biostatistics methodology research

- Transition models
- Primary prevention trial
- Risk factor modeling

EDUCATION, OUTREACH AND CLINICAL PROGRAMS

SBCoA reaches within UK and across Kentucky and the nation.

Clinical Programs, Support and Guidance:

- Memory screens, expert diagnosis at SBCoA Clinic
- Family care specialists provide consultation, education, care planning and community resources
- Caregiver training workshops
- Telemedicine-based clinic to individuals in their hometowns
- Opportunities to participate in both observational and clinical studies, with and without medication, for older adults across the cognitive spectrum, from those with no difficulties to those with advanced dementia.

Education and Outreach:

- Markesbery Symposium on Aging & Dementia
- "Mind Matters" Health Fair
- Educational program for certified skilled nursing facilities
- Brain Health Activities
- Memory Sunday
- Healthy Churches of Kentucky Coalition
- Social media/websites/newsletters
- Training programs for students, fellows, junior faculty

Many Collaborations and Partnerships within UK and across Kentucky. Some examples include:

- Numerous departments and centers at UK
- Dementia Friendly Lexington
- Balm In Gilead
- Bluegrass Area Agency on Aging
- Alzheimer's Association
- African American Dementia Outreach Partnership
- Kentucky Department for Aging
- Kentucky Council of Churches

Special efforts are made to ensure we reach diverse groups that have been historically underserved in research.

OUR HISTORY

The Eleanor and John Y. Brown Foundation awards a \$1M grant, to be matched by the state and the University for construction of a Center on Aging.

1972

The original Sanders-Brown building opens with only three faculty members and Dr. William Markesbery as its founding director.

1979

Sanders-Brown becomes one of 10 initial National Institute on Aging-funded Alzheimer's Disease Research Centers and one of 19 initial Geriatric Education Centers.

1983

The Brain Aging/Longitudinal Program begins, with subjects receiving yearly memory and thinking testing with agreement to brain donation.

1989

Linda J. Van Eldik, PhD, is recruited from Northwestern University in Chicago to become Center Director.

2010

The Down Syndrome and Aging Study begins.

Sanders-Brown is selected as one of seven MarkVCID sites nationwide, to discover and validate biomarkers for vascular dementia.

2016

A different form of dementia, LATE, is recognized as one of the top science stories by Discover magazine. The international group of experts who made this discovery is led by a Sanders-Brown faculty member.

2019

UK-ADRC is renewed for another 5 years (years 36-40).

2021