

DIVISION OF NEPHROLOGY, BONE & MINERAL METABOLISM

WE UNDERSTAND ALL ASPECTS OF KIDNEY & HEART CARE

Nephrology and cardiology patients require a well-defined, multidisciplinary approach led by a dedicated team to ensure the highest quality of care. The skilled providers at UK HealthCare's Cardiorenal Clinic draw on their expertise to develop actionable, patient-centered treatment plans.

Cardiorenal care encompasses a wide range of conditions, including volume overload due to congestive heart failure and concomitant cardiovascular and renal disease due to metabolic risk factors.

Recommended criteria for cardiorenal service consult

- AKI and volume overload requiring IV diuresis (creatinine >0.3 above baseline or oliguria for 6-12 hours)
- Volume overload requiring high-dose diuretics, with potential need for ultrafiltration
- Need for accurate volume status assessment (POCUS)
- AKI in setting of GDMT initiation (RAAS blockade, SGLT-2i)
- Hyperkalemia in setting of RAAS blockade
- Persistent hypokalemia in setting of diuretic use
- Comprehensive risks/benefit analysis and appropriate implementation of protective measures prior to nephrotoxic exposure (i.e., IV contrast, antibiotics)
- CHF and eGFR <30 for renal replacement therapy planning and palliative care assessment
- CKMS Stage 2 or greater (metabolic risk factor + eGFR <60 or albuminuria)

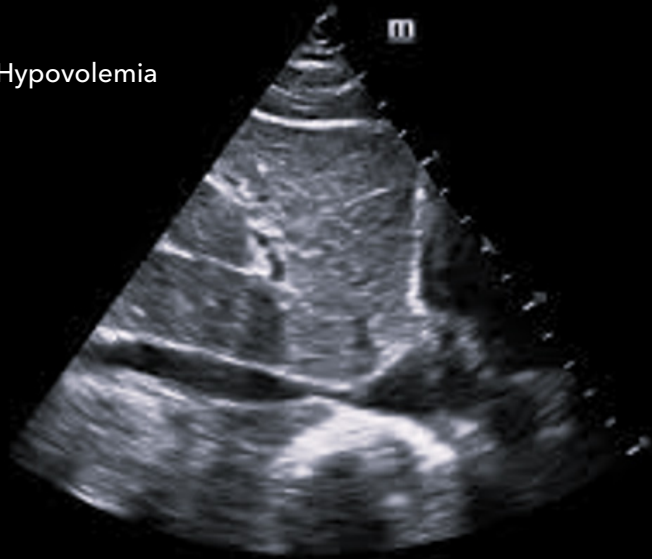
Conditions we manage

- AKI in setting of cardiovascular disease
- Hypervolemia
- Volume status assessment
- Electrolyte derangements in the setting of diuretics and RAAS blockade
- Advanced chronic kidney disease and congestive heart failure
- End-stage kidney disease discussion, including dialysis and palliative care
- Cardio-kidney-metabolic (CKM) syndrome

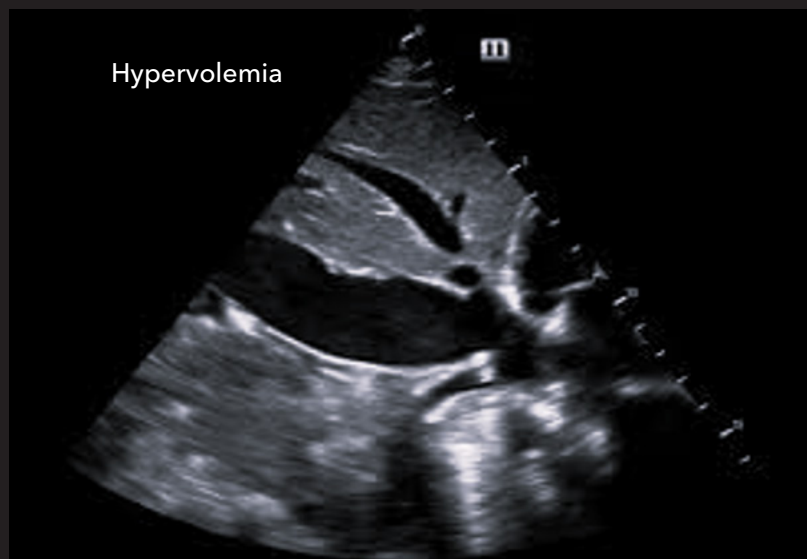


KIDNEY FAILURE

Hypovolemia



Hypervolemia



Samuel Beavin, MD



Katie Rust, DNP, APRN

Make a referral

For inpatients, place a consult with the appropriate ICU or Floor Nephrology team and specify Cardiorenal patient. In addition, a dedicated provider is available daily (Monday through Friday, 8 a.m. to 5 p.m.) via UK MDs to discuss any patient or to answer general questions. You can request to speak with the “cardiorenal team” on call.

For outpatients, refer patients to the UK Nephrology Clinic (859-323-2663), specifying the Cardiorenal Clinic. All referrals will be screened for appropriateness to be seen in this clinic.

To make a referral, contact UK MD's at **800-888-5533.**

Location

UK Nephrology Clinic

UK Good Samaritan Hospital
Professional Arts Center
135 E. Maxwell St.
4th Floor, Suite 401
Lexington, KY 40509

Phone: 859-323-2663

