

Steve North, MD, MPH

Amanda Martin, MHA

Center for Rural Health Innovation

Health-e-Schools of Western North Carolina: Reaching Students Where They Are with Telehealth

North Carolina



Mitchell County, NC



Questions?

Why
tSBHC??



$$\begin{aligned} & 1 \text{ day per month} \\ & \times 10 \text{ months per year} \\ & \times 13 \text{ years} \\ & = 130 \text{ days} \end{aligned}$$

(Almost a school year)

7 years

Increase in average life expectancy
for high school graduates
compared to non-graduates

What is a School- based Health Center?

The Intersection of Health and Education

Our mission is to promote the health and academic success of children and youth by increasing access to school-based health care and support services.



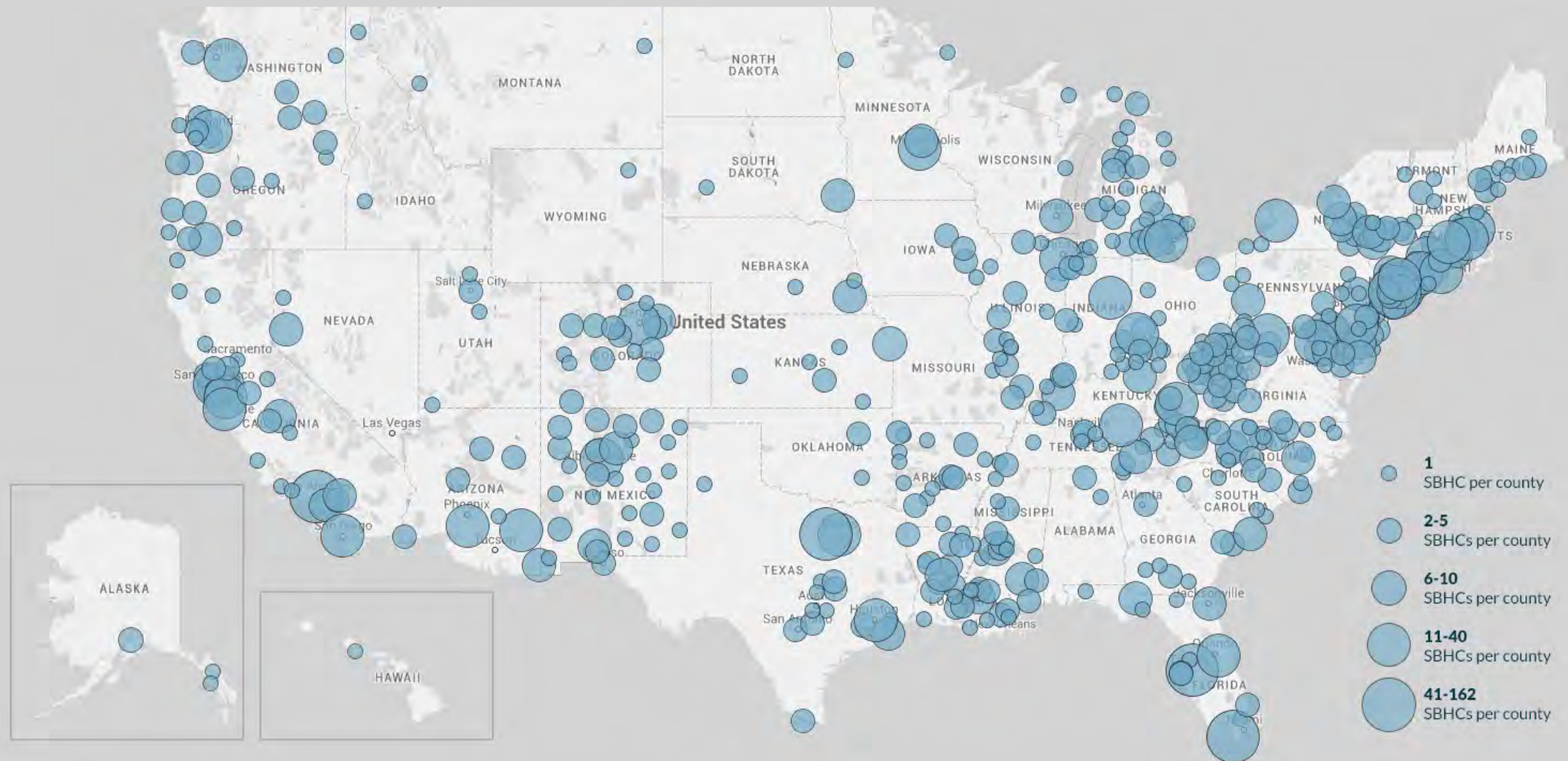
SBHCs Improve Health Outcomes



SBHCs Improve Academic Outcomes



SBHC Locations by County



Multiple Models of telehealth in school-based health centers

- 1) Add Services
- 2) Expand Reach
- 3) All Virtual



Telehealth in School-Based Health Centers

Adding Services

Lost to Follow Up

- Hospitalized 2013 at age 11
- BMI >99th %ile
- One follow-up visit
- Reconnected at school in 2014



Telehealth in School-Based Health Centers

Expanding Reach

Expanding Reach

- One provider rotates between sites
- Nurses or telehealth coordinators at other sites present the students
- Allows for comprehensive physicals



Telehealth in School-Based Health Centers

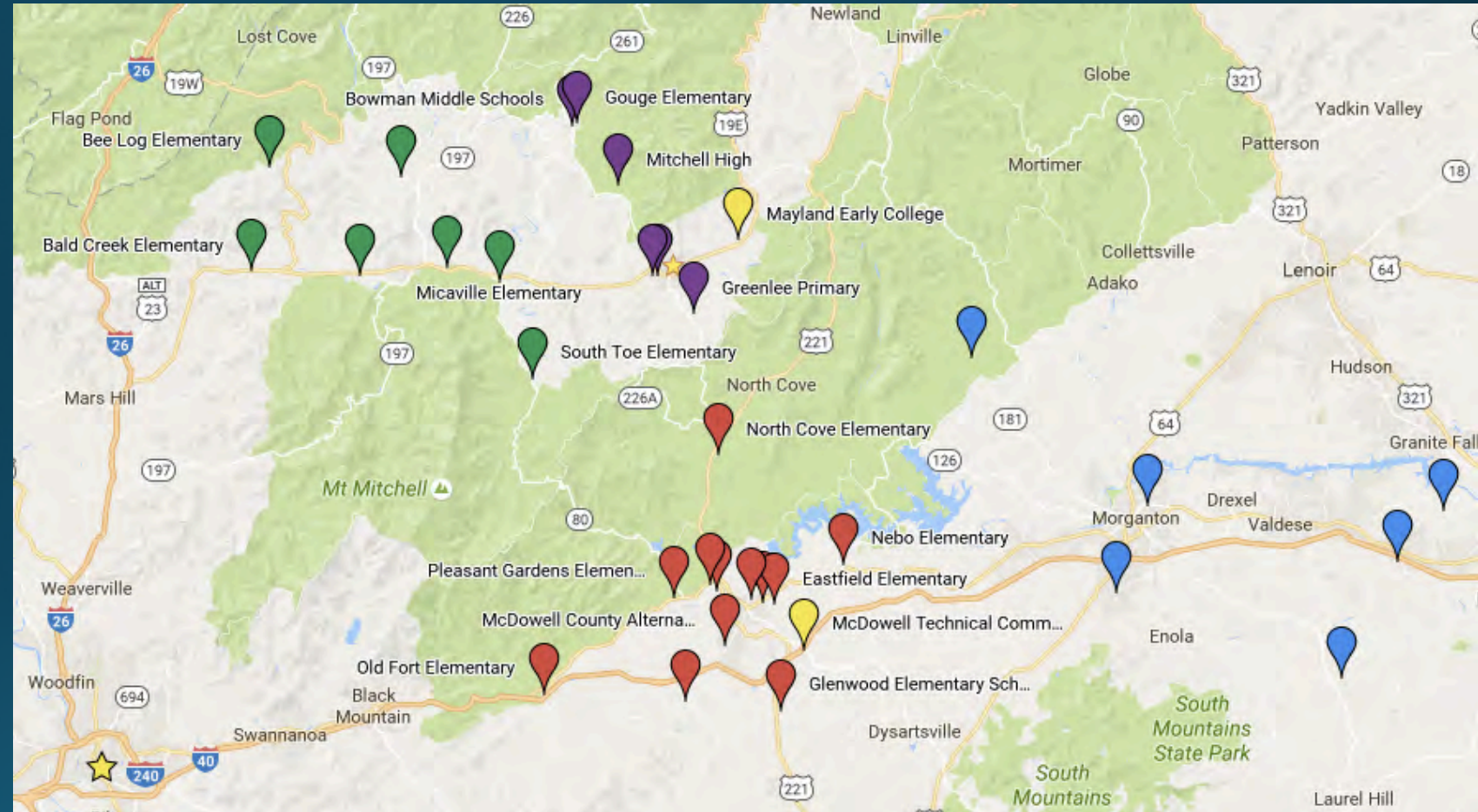
Entirely Virtual

Entirely Virtual





6 years
4 counties
33 schools
1500 sq. miles
4.5 FTE admin
1.0 FTE FNP



Needs Assessment

Family Survey

- Sent home with students
- > 30% response rate
- Complemented with a teacher survey



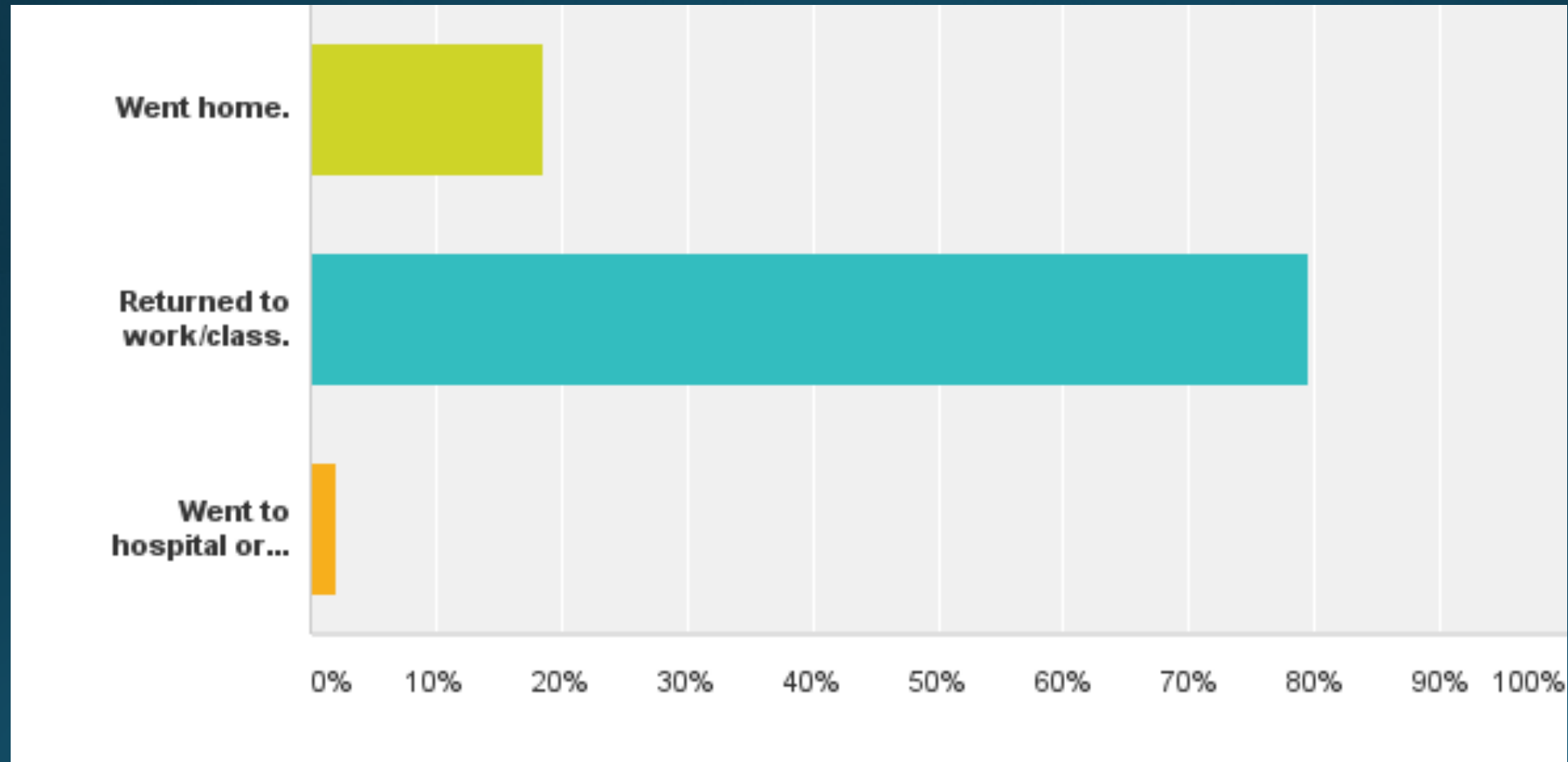
Funding for Health-e-Schools

ARC, RUS/USDA, HRSA

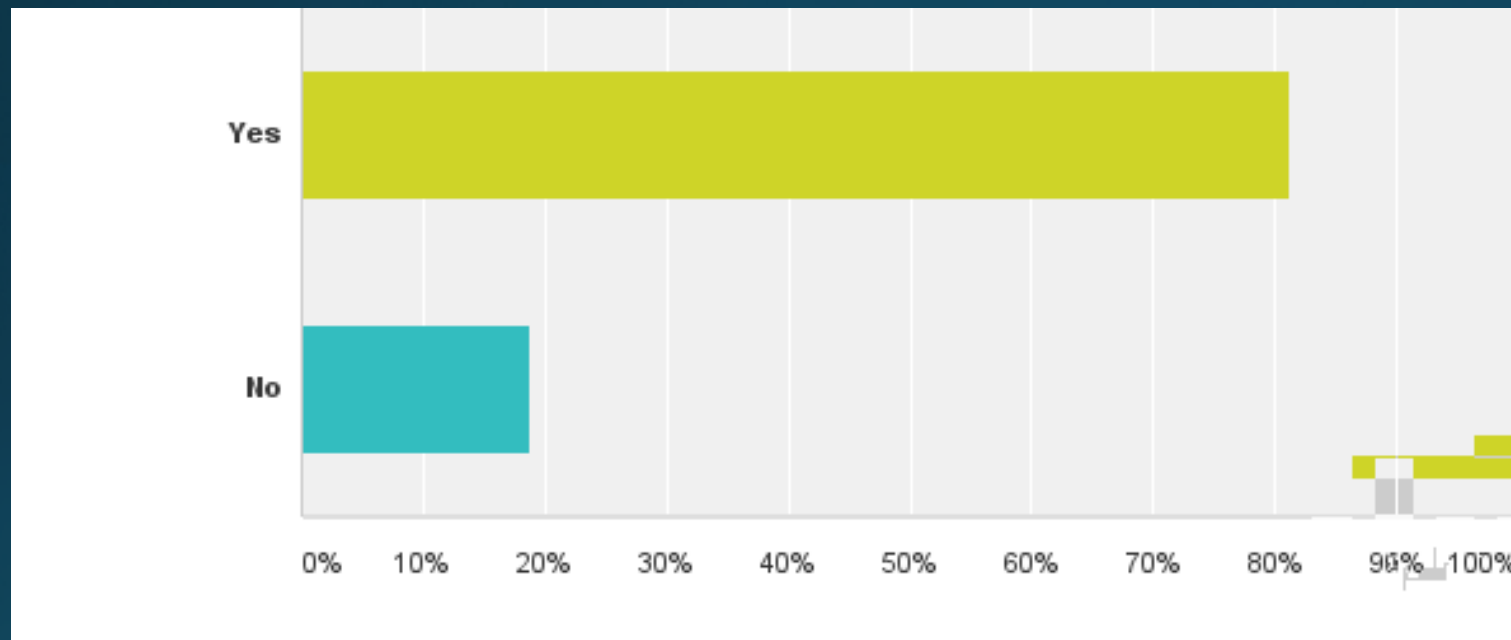
Local and State Foundations/Trusts

State agencies: ORH & DHHS

“Did they return to class/work?”

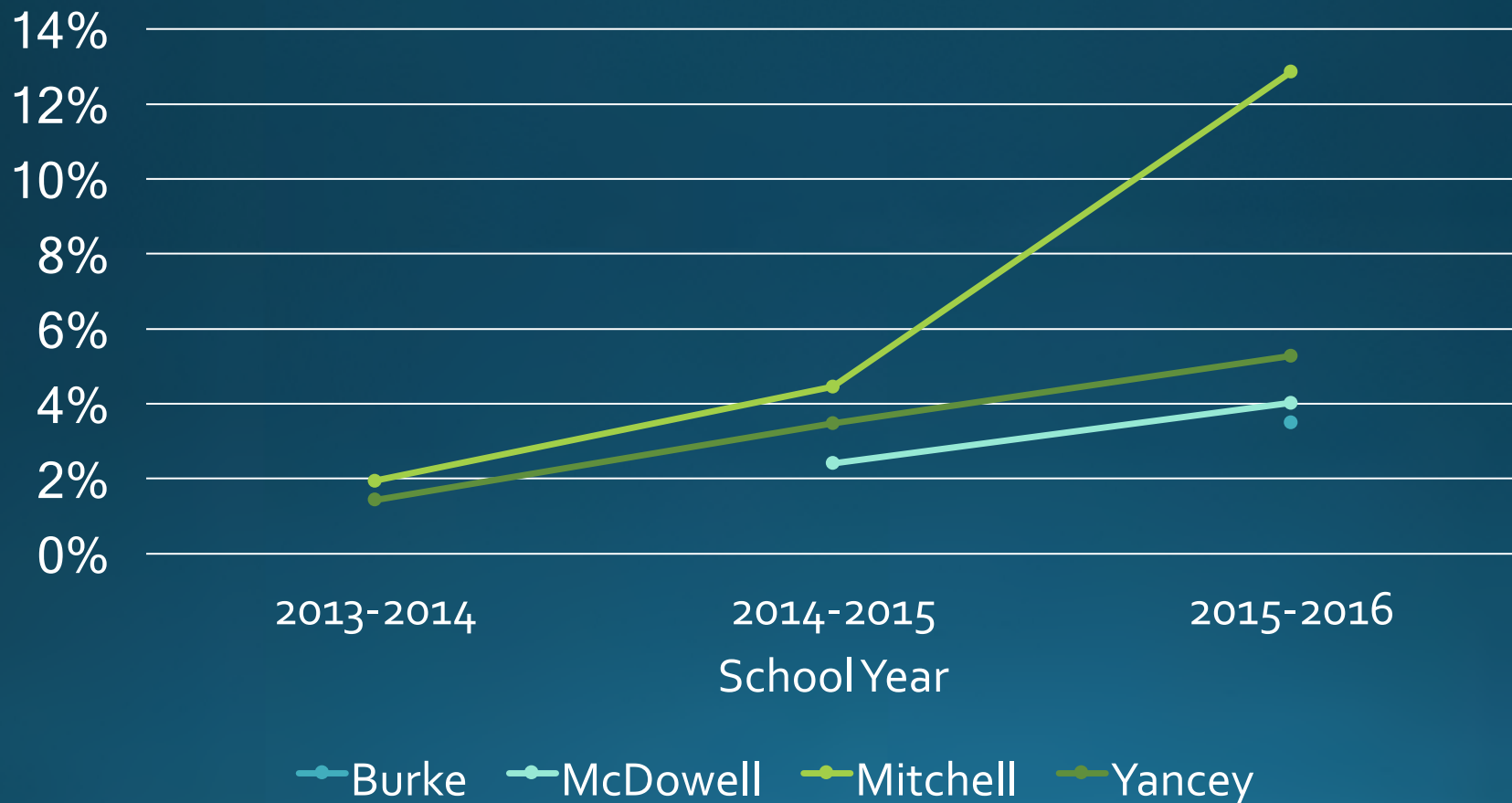


"Did using Health-e-Schools telemedicine services keep your child from missing school?"



N=53

Visits as a Percent of Student Population per Year



The Big Picture

US Children
average

1.6

doctor's visits per
year



160 school days per year

X 20 visits per day

X \$50 per visit

= \$160,000 annual revenue

Achieve sustainability by integrating with PCMH/ACOs



EVIDENCE?

Qualitative: Michael Follow-up



- *"I've seen her twice and I have lost 7 lbs"*
- More energy
- Decreased BMI (93rd %ile)
- Improved BP control
- Continues on medication
- *ENGAGED IN HIS CARE*

Quantitative: Outcomes Focused

Research

SBHA: Standardized National Performance Measures for SBHCs

Core	Annual well child visit	Annual risk assessment	BMI screening and nutrition/physical activity counseling
	Depression screening and documentation of follow-up plan if screen positive	Chlamydia screening	
	Student disposition log (seat time saved)	SBHC student user survey	SBHC policies and procedures survey
Stretch			

Telehealth Network Program Grant

- RURAL SCHOOL-BASED HEALTH CARE VIA TELEMEDICINE
- \$300,000/yr for 4 years
- 21 grants awarded
- 177 New school-based telemedicine sites





Rural Telehealth Research Center



Copy of SBHC Measure Matrix_Clinical_2 15 17_for external call										
Search Sheet										
Share										
Home Insert Page Layout Formulas Data Review View										
Cut Copy Paste Format Calibri (Body) 12 Bold Italic Underline Wrap Text General Conditional Formatting Format as Table Cell Styles Insert Delete Format AutoSum Fill Clear Sort & Filter										
A1 High Priority										

Standardized Pediatric Research on Outcomes and Utilization of Telehealth



- Identify best practices for implementation of pediatric telehealth
- Determine the impact of telehealth on healthcare quality
- Establish a network of institutions to conduct collaborative research on pediatric telehealth



- 100 members
- 70 Institution

Initial Assessment

- Database of programs
- Program Characteristics
- 54 institutions completed survey



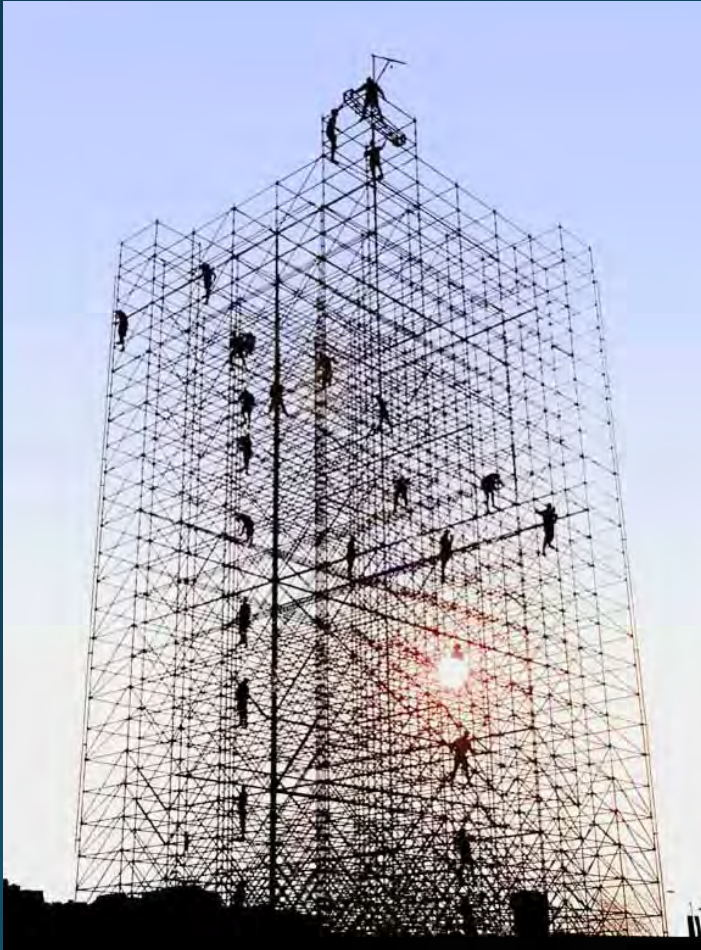
National Quality Forum



NQF 2721:

The percentage of children who received visual acuity screening at least once by their 6th birthday; and if necessary, were referred appropriately.

NQF Telehealth Framework



Five Domains

- Access to Care
- Cost
- Cost Effectiveness
- Patient Experience
- Clinician Experience

Moving tSBHC research forward



Health Outcomes

- Appropriate use of care through Improved Access
- Specific health measures
- Coordination of care
- Multiple dimension of cost

Educational Outcomes

- Impact on Attendance
- Improve academics and graduation

More Information



Annual Conference

June 18th-21st 2017

Long Beach, CA

Sbh4all.org

Webinars

Interactive Forum

matrc.org



amanda.martin@crhi.org

steve.north@crhi.org