



**KORH Virtual  
Academy**

**Budgets  
and Logic  
Models**

# Today

Intro

Budgets &  
Budget  
Narratives

Resources

Logic Models

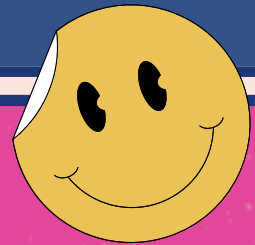


# About

The Kentucky Office of Rural Health (KORH), established in 1991, is a federal-state partnership authorized by federal legislation. The UK Center of Excellence in Rural Health serves as the federally-designated Kentucky Office of Rural Health. The mission of the KORH is to support the health and well-being of Kentuckians by promoting access to rural health services.

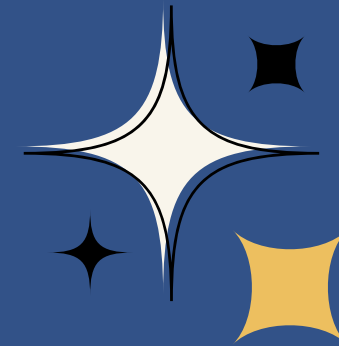




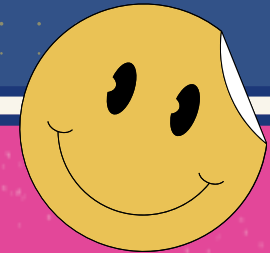


## Books

Did you know that Candid Learning allows you to borrow grant writing books FREE?



## Support



### Just Transition Fund

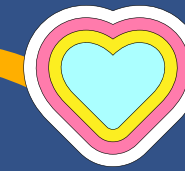
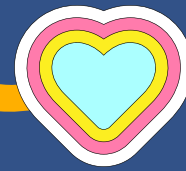
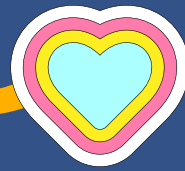
The Fund was initially created to help local organizations secure funding through the POWER Initiative, the first federal program targeted to communities impacted by the changing coal economy. In the process, they helped jumpstart the engagement of national philanthropy and showcased the innovative, ground-up ways that local communities are working to revitalize their local economies.





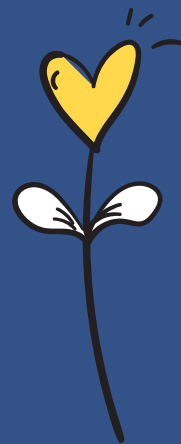


# Budget Basics



## Tag in the Finance person

The easiest way to help with your budgeting needs is to get your organization's financial expert to weigh in. They can assist with salary information, fringe benefits, percentages of positions, organization indirect costs, and more...



## Match requirement?

One of the first things you may notice when reviewing the NOFO is the need for matching funds. The budget is where you highlight these matching funds. Is there a ratio 1:1, 2:1, etc?



## In Kind

In-kind contributions are non-monetary. Goods or services offered free or at less than the usual charge result in an in-kind contribution. Similarly, when a person or entity pays for services on the committee's behalf, the payment is an in-kind contribution.

How to  
Calculate In-Kind  
Ford Family Foundation



# Samples to help



[Promoting Health Equity in Underserved Populations Across the Commonwealth of Kentucky](#)



[Utah Valley University: How to Prepare a Budget Narrative/Budget Justification](#)



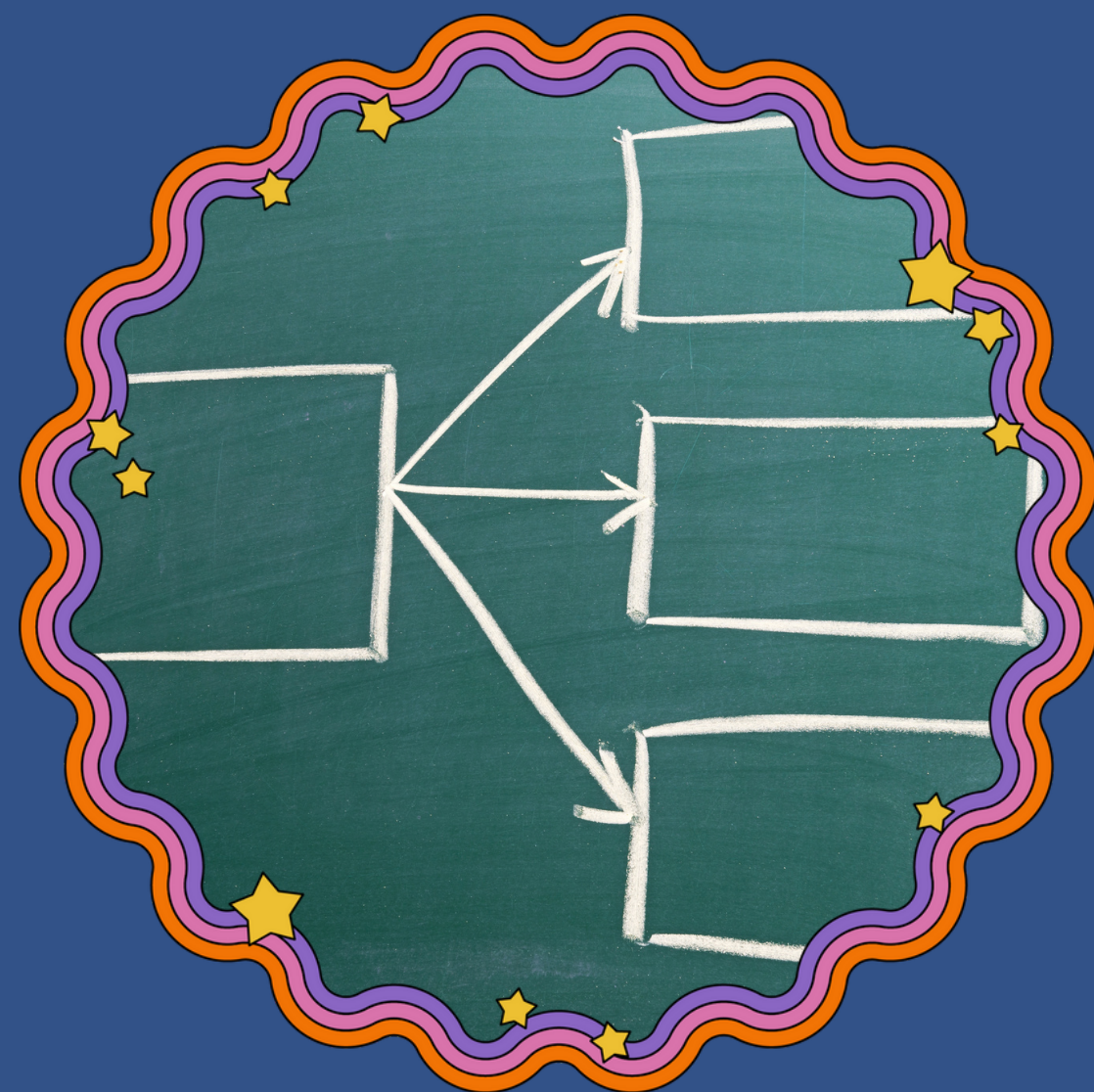
[Minnesota Department of Employment and Economic Development](#)



# Care to share?

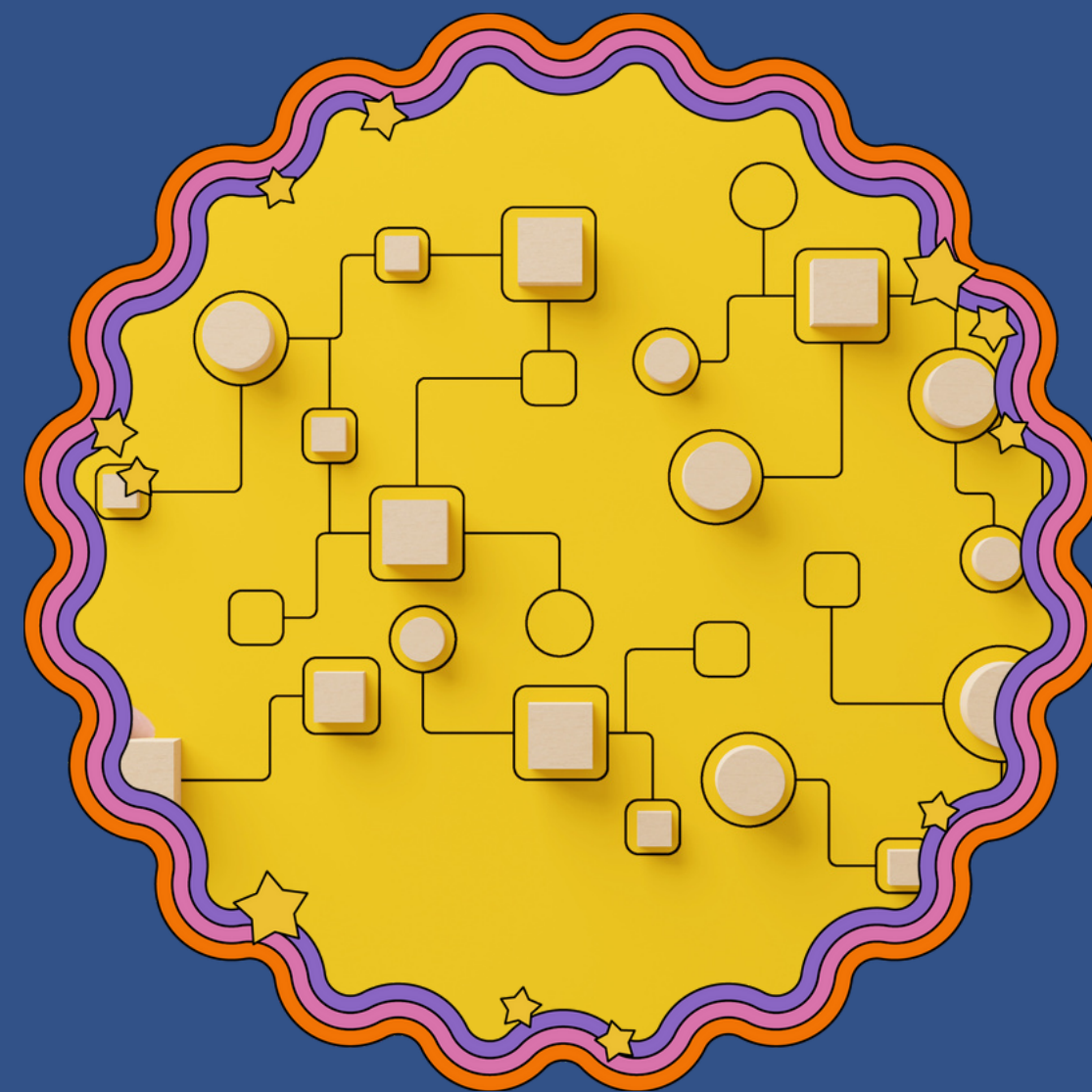




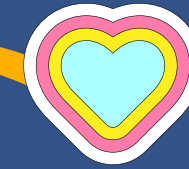
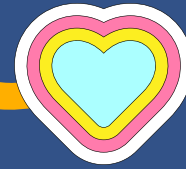
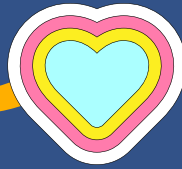


# Logic Model

## 2

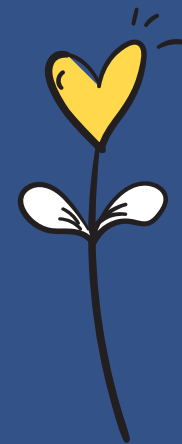


# Logic Model



## Inputs

The resources needed to operate your program. (Grant money, staff, equipment, facilities, etc.)



## Key Activities

Identify the activities you will accomplish with these resources. (develop curricula, provide training, deliver health screenings)



## Measurable Outputs

Identify the amount of products or services you will deliver if you accomplish your planned activities. (number of workshops, number of attendees, number of screenings)

## Measurable Short Term Outcomes

Identify how your program participants will benefit if you accomplish your planned activities. Outcomes should be specific, measurable, attainable, realistic, and time-based. (new knowledge, increased skill levels, modified behavior)

## Measurable Long Term Outcomes

Identify the changes to communities and systems expected to occur if these benefits are achieved. (healthier and more stable families, improved birth outcomes)



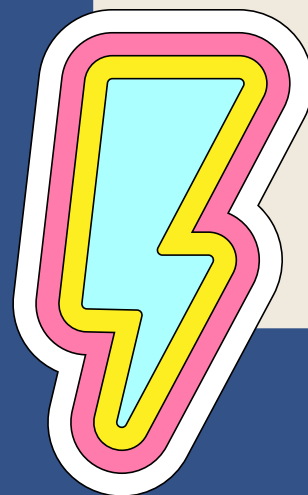
# A little help



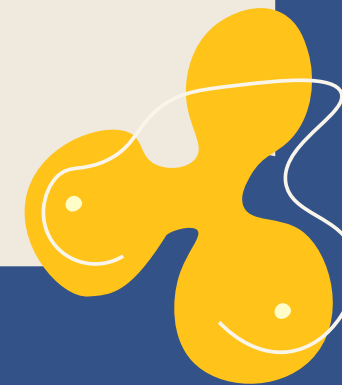
[Administration for Children and Families -  
Logic Model Tip Sheet](#)



[Minnesota Department of Health - Logic  
Model Tip Sheet](#)



# Logic Model Tips



Outcomes are the  
**IMPACT** of what you do.

Work backwards

Is your output qualitative or quantitative?



A logic model is a graphic representation  
of your proposal. Does each step connect  
to the results you're aiming for?



# Care to share?

