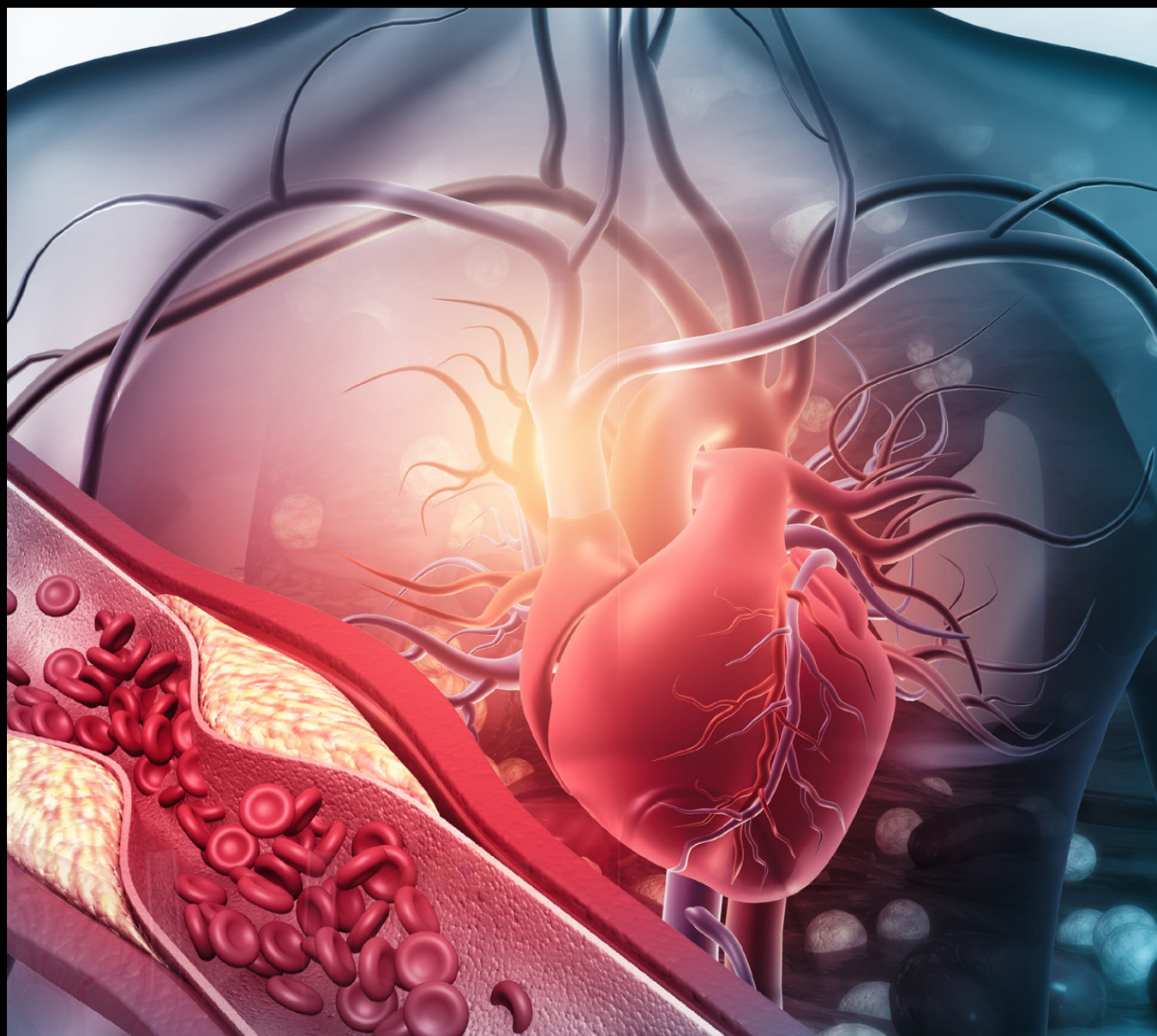


GILL QUARTERLY

PUBLISHED BY UK GILL HEART & VASCULAR INSTITUTE

Summer 2022





GILL QUARTERLY

SUMMER 2022

TABLE OF CONTENTS

Clinical Trials | Page 3

Fellows News/Accomplishments | Page 6

Affiliate News | Page 14

Research Features | Page 16

Summer Features | Page 18

Awards| Page 24

Current Research Funding | Page 28

Publications | Page 33



FEATURED CLINICAL TRIAL

MK-5475-007: A Phase 2/3, Multicenter, Randomized, Double-blind, Placebo-Controlled, Adaptive Design Study to Evaluate the Efficacy and Safety of MK-5475 in Adults with Pulmonary Arterial Hypertension

PI: David Booth, MD

Sponsor: Merck Sharp & Dohme LLC

Objective: Two cohorts to evaluate the effect of MK-5475 □ versus placebo on the pulmonary vascular resistance (PVR) at Week 12 □ versus placebo on 6-minute walk distance (6MWD) at Week 12

Trial Background:

This is a two-part (Phase 2/Phase 3) study of MK-5475, an inhaled soluble guanylate cyclase stimulator, in participants with pulmonary arterial hypertension (PAH).

The first part (Phase 2) will assess three different doses of MK-5475 compared to placebo in a base period of 12 weeks, followed by comparison of three different doses of MK-5475 during an optional 24 month extension period. The treatment dose with the best efficacy and safety profile in the phase 2 cohort base period will be selected for use in the second part (Phase 3) of the study. The primary hypothesis of Phase 2 is that at least one MK-5475 dose is superior to placebo in reducing pulmonary vascular resistance (PVR) from baseline at week 12.

The purpose of the second part (Phase 3) of the study is to confirm the efficacy, safety, and tolerability of MK-5475 at the selected dose compared to placebo during a 12 week base period followed by an extension period of up to 5 years. The primary hypothesis of Phase 3 is that MK-5475

is superior to placebo in increasing 6-minute walk distance (6MWD) from baseline at week 12.

Study Design

Allocation: Randomized

Intervention Model Description: A total of approximately 450 participants will be randomized in this operationally seamless adaptive Phase 2/3 study. Phase 2 of the study will randomize approximately 164 participants into 4 arms, and Phase 3 of the study will randomize approximately 286 participants into 2 arms.

Inclusion Criteria:

Pulmonary arterial hypertension (PAH) in one of the following groups: Idiopathic PAH, Heritable PAH drug and toxin-induced PAH, PAH associated with connective tissue disease, HIV infection, or congenital heart disease., Diagnosis of PAH documented by right heart catheterization (RHC).

Eligibility RHC meeting all of the following criteria:

Mean pulmonary artery pressure (mPAP) ≥ 25 mmHg
Pulmonary vascular resistance (PVR) of ≥ 3 Wood units
Pulmonary capillary wedge pressure (PCWP) or left ventricular end diastolic pressure (LVEDP) ≤ 15 mmHg.

For additional trial information, please visit:

<https://clinicaltrials.gov/>

For more information Contact: Travis Sexton, PhD
859-323-1082

CURRENTLY ENROLLING CLINICAL TRIALS

OPTIMIZER SMART POST - APPROVAL STUDY

PI: Aaron Hesselson, MD

Coordinator: Ronals Smith 859-323-7195

Objective: Post-approval study that evaluates data such as cardiac outcomes, quality of life, mortality, and functionality. Long-term data needed to assess complication rates and potential interactions with other implantable devices in the intended patient population. The post-approval study (PAS) protocol designed to address these concerns in a real-world setting.

Amplatzer™ PFO Occluder and Amplatzer™ Talisman™ PFO Occluder PAS (“PFO PAS”) Post Approval Study

PI-John Gurley, MD

Coordinator: Stephanie Morris, CCRP 859-323-5366

Objective: To demonstrate safety of the Amplatzer™ PFO Occluder and Amplatzer™ Talisman™ PFO Occluder by assessing the 30-day rate of device- or procedure-related serious adverse events including those that led to death.

REVERSE-IT: A Phase 3, Multicenter, Open-Label, Single-Arm Study of PB2452 in Ticagrelor-Treated Patients with Uncontrolled Major or Life-Threatening Bleeding or Requir- ing Urgent Surgery or Invasive Procedure

PI: John Kotter, MD

Coordinator: Jennifer Isaacs, CCRP 859-323-4738

Objective: To demonstrate reversal of the antiplatelet effects of ticagrelor with IV infusion of PB2452 and to demonstrate the clinical efficacy of PB2452 by assess-

ment of hemostasis in ticagrelor-treated patients with uncontrolled major or life-threatening bleeding in an open-label, single-cohort study.

The REVEALPLAQUE Study: A pRospEctiVe, multicEnter study to AnaLyze PLAQUE using CCTA

PI: Steve Leung, MD Coordinator:

Coordinator: Travis Sexton, PhD 859-323-1082

Objective: To evaluate the level of agreement between noninvasive CCTA-based quantification and characterization of coronary atherosclerosis and invasive IVUS.

MK-5475-007: A Phase 2/3, Multicenter, Ran- domized, Double-blind, Placebo-Controlled, Adaptive Design Study to Evaluate the Efficacy and Safety of MK-5475 in Adults with Pulmonary Arterial Hypertension

PI: David Booth, MD

Coordinator: Travis Sexton, PhD 859-323-1082

Objective: Two cohorts to evaluate the effect of MK-5475

- versus placebo on the pulmonary vascular resistance (PVR) at Week 12
- versus placebo on 6-minute walk distance (6MWD) at Week 12

induced hypothermia for neuroprotection in comatose survivors of cardiac arrest.

CLINICAL TRIALS CONTINUED

RIN-PH-304: A Phase 3, Randomized, Placebo-controlled, Double-blind, Adaptive Study to Evaluate the Safety and Efficacy of Inhaled Treprostinil in Patients with Pulmonary Hypertension due to Chronic Obstructive Pulmonary Disease (PH-COPD)

PI: Shaun Smith, MD

Coordinator: Travis Sexton, PhD 859-323-1082

Objectives: The primary objective of this study is to demonstrate the efficacy of inhaled treprostinil compared to placebo in improving exercise ability as measured by change from baseline in 6MWD following 12 weeks of active treatment in subjects with PH-COPD.

Clinical Research Team

John Kotter, MD

Medical Director, Gill Heart & Vascular Institute
Clinical Research

Jennifer Isaacs, MS, MS, CCRP

Clinical Research Services Director
Cardiovascular, Neurointerventional and Radiology
Services
Gill Heart & Vascular Institute Clinical Research
859-323-4738
Jennifer.isaacs@uky.edu

Stephanie Morris, CCRP

Clinical Research Operations Manager
Cardiovascular, Neurointerventional and Radiology
Services
Gill Heart & Vascular Institute Clinical Research
Phone: 859-323-5366
Stephanie.A.Morris@uky.edu

Research Coordinators

Travis Sexton, PhD

859-323-1082
trsext2@uky.edu

Ronald Smith, MA

859-323-7195
Ronald.T.Smith@uky.edu

FELLOWS NEWS GRADUATION

Advanced Heart Failure & Transplant Fellowship Program Dr. Josue Villegas-Galaviz



Medical School: Autonomous University of Beja California School of Medicine

Residency: Indiana University

Plans After Graduation: Cardiac Amyloidosis Fellowship, Boston University Medical Center

Advanced Cardiac Imaging Fellowship Program Dr. Ashley Brunmeier



Medical School: Southern Illinois University School of Medicine

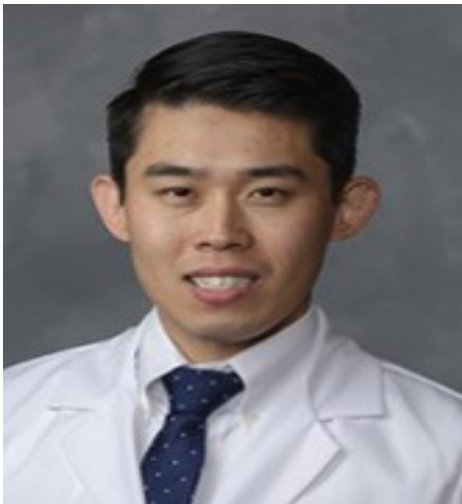
Residency: Medical College of Wisconsin

Cardiology Fellowship: University of Kentucky

Plans After Graduation: ACHD, Ohio State University



Dr. Joshua Eason



Medical School: University of Pikeville, Kentucky Col of Osteopathic Med

Residency: University of Arizona

Cardiology Fellowship: University of Kentucky

Plans After Graduation: Non-invasive Cardiologist at St. Joseph Dignity Health, Phoenix, AZ

FELLOWS NEWS GRADUATION

Interventional Cardiology Fellowship Program Dr. Hussam Hawamdeh



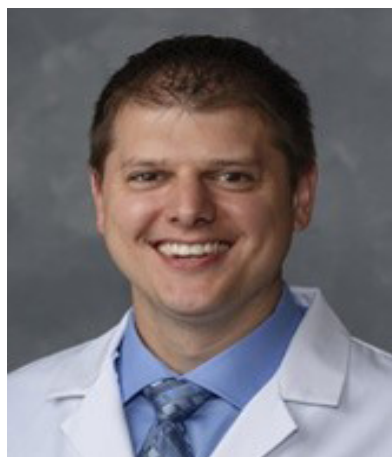
Medical School: University of Jordan in Amman, Jordan

Residency: University of Florida, Gainesville

Cardiology Fellowship: University of Florida, Gainesville

Plans After Graduation: Baptist Health, Fort Smith, Arkansas

Dr. Matthew Rafn



Medical School: University of Wisconsin School of Medicine

Residency: University of Wisconsin

Cardiology Fellowship: University of Kentucky

Plans After Graduation: Bellin Cardiology Associates, Green Bay, WI

Dr. Matthew Sousa



Medical School: University of Cincinnati College of Medicine

Residency: University of Kentucky

Cardiology Fellowship: University of Kentucky

Plans After Graduation: Norton Heart and Vascular Institute, Louisville KY

Cardiovascular Disease Fellowship Dr. Hoyle Whiteside



Medical School: *Medical College of Georgia*

Residency: Medical College of Georgia

Plans After Graduation: Critical Care Fellowship, University of Kentucky

Dr. Krystof Andress



Medical School: Charles University, Prague

Residency: Cleveland Clinic, OH

Plans After Graduation: Advanced Heart Failure Fellowship, University of Kentucky

Dr. Dan Krause



Medical School: AT Still University School of Osteopathic Medicine, Meza AZ

Residency: Maricopa Medical Center

Plans After Graduation: General Cardiologist at Aspirus Hospital, Wausau, WI

FELLOWS NEWS GRADUATION



Dr. Eric Kreps

Medical School: University of Louisville School of Medicine

Residency: University of Alabama, Birmingham

Plans After Graduation: General Cardiologist, Baptist Health Louisville

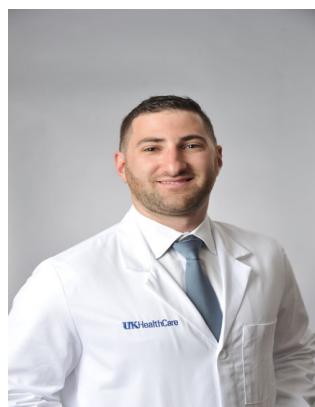


Dr. Zariyat Mannan

Medical School: St. George's University School of Medicine

Residency: Cleveland Clinic, OH

Plans After Graduation: Advanced Cardiovascular Imaging Fellowship at Brigham & Women



Dr. Marc Paranzino

Medical School: Lincoln Memorial University

Residency: University of Kentucky

Plans After Graduation: Complete an MPH and obtain additional skills in Sports Cardiology. Return to UK as Faculty in 2023.

Special Recognition

Dr. Moneera Haque



Medical School: University of Kansas

Residency: Georgetown University Hospital

Plans After Graduation: Assistant Professor, University of Kentucky

Awards

Michael G. Spain Award



The Michael G. Spain Award is given to a faculty or staff member for extraordinary contributions toward the betterment of the fellowship program. This year's winner is: **Vincent L. Sorrell, MD.**

Dr. Sorrell has made numerous contributions to the improvement of our cardiology fellowship. Ever since he came to UK, he has been a phenomenal teacher, and mentor to our fellows. He probably has the highest conference attendance percentage of all our faculty (and fellows). He took over as fellowship director in 2014. When we had 2 fellows interested in advance imaging, and only 1 spot, he was able to redesign their fellowship to ensure both will get the opportunity to complete their goals. He worked with the critical care fellowship to develop a cardiac critical care combined fellowship, and we just had our first graduate last year in Dustin Hillerson. Trey will be our next. He also was able to help Monica to join our fellowship this year, and we are fortunate to have her join our staff this year.

Borys Surawicz Award



Borys Surawicz Award is given to a distinguished teacher as well as mentor award voted by fellows to the faculty. This year's winner is: **Joseph Souza, MD.**

FELLOWS NEWS GRADUATION

Teresa Hignite Award



The Teresa Hignite Award is given to a fellow who exhibits exceptional professionalism and a positive attitude. This year's winner is: **Zariyat Mannan, MD.**

For more graduation photos, copy and paste this link into the address bar:

\\ukhcd\dept\Internal Medicine\Cardiology\Fellowship\Fellowship\Website\2022-06
Fellows Graduation



SAVE THE DATE

UK HealthCare Annual Cardio-Oncology Symposium

December 3-4, 2022

8 a.m. - Noon, EST (1 p.m. - 5 p.m., UTC)

Don & Cathy Jacobs Science Building

680 Rose St.

Lexington, KY 40508

Virtual options available.

Mark your calendars to join colleagues across the state for the UK HealthCare Annual Cardio-Oncology Symposium. This CE-accredited, two-day conference will provide state-of-the-art best practice information about continuum of cardiac care for oncology patients and will help you understand the interactions between cancer and cardiovascular symptoms. Registration is complimentary for all University of Kentucky faculty and staff, UK Gill and Markey affiliate network members, and Global Cancer Consortium Members.

MORE INFORMATION

For additional information, visit our event website at cecentral.com/live/23084, or contact Colleen McMullen at cmcmu2@uky.edu or **859-312-0819**. More details and formal invitation to follow.

MKTG22-1236



Kentucky
CHAPTER

18th Annual Meeting & Scientific Session

LIVE & IN-PERSON!



Louisville Marriott East • September 10, 2022



AFFILIATE NEWS

EXECUTIVE COMMITTEE MEETINGS

In 2014, the Gill Heart & Vascular Institute launched the Gill Affiliate Network. Now comprised of 20 hospitals across Kentucky, the Gill Affiliate Network enhances access to high-quality cardiovascular care by collaborating with local community hospitals and medical centers. The Network's goal is to ensure that the full complement of heart care, from medical cardiology to vascular and cardiothoracic surgery, is accessible to residents across the state.

Pictured above from left to right: Robin Mayberry, GAN Clinical Quality & Program Director; Polly Bechtold: Director of Quality; Jodi Fourqurean, Cardiovascular Institute Nurse; Dr. Rajagopalan, Director GAN.

Each year, the UK Gill Heart & Vascular Institute Affiliate Network meets with each affiliate hospital for a year-end review. Known as Gill Affiliate Network Executive Committee meetings, these meetings provide an opportunity to review network achievements and accomplishments over the past year as well as discuss goals, objectives, and opportunities for collaboration in the year ahead. This time is also used to orient and onboard new providers and staff to the Gill Affiliate Network. Attendees at this meeting generally include CEOs; CNOs; cardiologists; cardiovascular directors; ED, cath lab, and imaging directors; as well as

marketing and quality representatives. The Gill Affiliate Network team started their annual reviews this spring and will conclude them by late August.

Our goal with the Gill Heart & Vascular Institute Affiliate Network is to enhance access to high-quality cardiovascular care by partnering with community hospitals to provide the right care in the right place at the right time.

See here for more information:
<https://ukhealthcare.uky.edu/gill-heart-vascular-institute/professionals/affiliates>

SAVE THE DATE
OCTOBER 28, 2022
CENTRAL BANK CENTER

CARDIOVASCULAR RESEARCH DAY

GILL AWARDS

**TRAINEE & FACULTY
PRESENTATIONS**

**JUDGED POSTER SESSION
WITH CASH PRIZES**

TRAVEL AWARDS NETWORKING SESSION SAHA AWARDS

FREE REGISTRATION FOR ALL ATTENDEES PROVIDED BY

 **CARDIOVASCULAR
RESEARCH PRIORITY AREA**

 **Saha Cardiovascular
Research Center**

 **HealthCare
GILL HEART & VASCULAR
INSTITUTE**

RESEARCH NEWS

MAKE BETTER CHOICES 2 (MBC2)

The University of Kentucky's MBC2 study recently celebrated a new wave of community participation with a ribbon-cutting ceremony at its project headquarters in Benham, KY. The study uses an interactive app, personalized health coaching, Fitbits, and financial incentives to improve health. To learn more about this free program, visit MakeBetterChoices2.com

Make Better Choices 2 (MBC2), a mobile health (mHealth) project through the University of Kentucky. MBC2 aims to improve health among Eastern Kentuckians through an interactive app, personalized health coaching, Fitbits and financial incentives. The study will involve approximately 350 rural Appalachian Kentuckians, a population at high risk for cardiovascular disease, obesity, diabetes, cancer and other chronic conditions that can be improved by diet and physical activity.

While this and all programs experienced delays due to COVID-19 restrictions, the team was able to continue with important aspects of the research by doing a pilot study last summer, working with local residents to develop program content, hiring and training additional staff members, and setting up an additional site on the UK campus.

"While these past two years have been times of trouble and strife, people from the mountains of Appalachia have always been very

resilient and hardy," said **Nancy E. Schoenberg, Ph.D.**, the Marion Pearsall Professor of Behavioral Science in UK's [College of Medicine](#), director of [UK's Center for Health Equity Transformation](#) and principal investigator for the study.

"We are so excited to get back to work with some of the most amazing people in the world," Schoenberg said.

The research team is testing whether MBC2 can lead to meaningful and sustained lifestyle improvements, which help prevent sickness and early death. Participation is open to any Eastern Kentucky resident 18 and older meeting health and health behavior eligibility requirements. All must have a cell phone and agree to use it for the project.

Deanna Lee Sherman, MBC2 project manager and resident of Harlan County, noted that excitement about the project is growing.

"The community's response has been amazing. We're seeing some exciting traffic on Facebook, with very little advertising," Sherman said. "People are looking for local and meaningful ways to get healthier. This program offers that in a fun, supportive way, and at no cost."

Sherman and her team have worked with more than 50 local

residents in the pilot to make sure that people know how to use the study's technology and benefit from the programming.

Among those attending the ceremony were local residents who participated in MBC2's pilot study, community members serving on the study's advisory board, and city and county officials.

Closplint resident Heather Eldridge, a participant in the pilot study, said the program's personalized health coaching helped her set realistic goals.

"I feel I gained a better understanding of the way I deal with and my body reacts to stress. I am more aware of situations that cause anxiety and I feel more equipped to deal with them," Eldridge said. "My family noticed a change in me for the better. I am very grateful for that."

MBC2 previously produced statistically significant improvements in diet and physical activity and participants were able to keep up the positive changes.

"This newest program focuses on diet and activity and works very well in a big city, helping people eat better and move more, but we need to make it work here," Schoenberg said. "Studies have shown that the pandemic added pounds, interrupted our exercise routines and made us spend more time on screens, causing more



sleepless nights and added stress.”

The MBC2 study will try to help local residents overcome some of the challenges and lead healthier lives, she said.

“We are ready to roll up our sleeves and help everyone make better choices and lead healthier, happier lives,” Schoenberg said.

Schoenberg and her community partners developed the Faith Moves Mountains health promotion projects through UK-community partnerships. These efforts, including a successful and ongoing diabetes management program and a child nutrition program, are located in Eastern Kentucky.

MBC2 previously produced statistically significant improvements in diet and physical activity and participants were able to keep up the positive changes.

“For the past 16 years, we have teamed up with talented and committed local residents to create health programming that people feel is important,” Schoenberg said. “We listen to community health priorities and find the most innovative programs and approaches in the research. Then, we make sure they fit here.”

Sherman credited the local residents for making the MBC2 study possible as the program kicked off during the pandemic. “Our communities really came through for us in adapting this study for Eastern Kentucky,” Sherman said. “From meeting with us in small group sessions to working with us creatively through COVID challenges, with our community partnerships we have developed a wonderful program that is already making a difference.”

Leah Baldwin, a resident of Letcher County who manages a ministry organization there, participated in one of three community sessions in 2020 to help develop the app for its

Eastern Kentucky population. Everyone needs a support system in change, Baldwin said.

“Having an individualized support system to break down what seems impossible into manageable steps will be what sets this program apart,” Baldwin said.

To learn more about the MBC2 study, contact staff at (606) 894-0355, by email makebetterchoices2@uky.edu or visit [MakeBetterChoices2.com](https://www.makebetterchoices2.com). On Facebook and Instagram @makebetterchoices2 and on Twitter @mbchoices2

Adapted from CHET News April 2022

APRIL TWENTY-NINE YEARS

LEXINGTON, Ky. (April 15, 2022) —“It was six days,” said Eddie Grimes’ son, Glenn. “That’s what I remember. They gave him six days to live.”

In March of 1993, 53-year-old Sharpsburg resident Eddie Grimes was suffering from cardiomyopathy – a disease of the heart muscles that prevents proper blood flow. Eddie’s life was turned upside down the moment he discovered that his condition had developed into congestive heart failure.

At the time, he was a factory worker and a proud father of two living with his loving wife, Alma. They were watching their older daughter kick-start her career in Cincinnati, and had just sent their younger son off

Eddie Grimes (center) has built great relationships with his UK HealthCare care team over the past 29 years. Hilary Brown | UK Photo

to college. With his kids growing up, he was looking forward to his next phase of life.

Initially, he began treatment at a local community hospital for his coronary artery disease. But when his heart condition escalated, he required critical care and was sent to an intensive care unit at [University of Kentucky Albert B. Chandler Hospital](#).

Grimes and his family spent the next three months working together to fight for his life. He could barely walk, eat or drink – and he began to hallucinate because blood was not being circulated to his brain. Eddie was told that he needed a heart transplant to survive – and at one point, they estimated that he only had six days to live if a donor heart didn’t become available.

Grimes was lucky enough to receive the heart transplant he needed at the UK Chandler Hospital on March 8, 1993. And amazingly, 29 years later, that same heart is keeping him strong.

The moment he woke up after the surgery, Eddie said he felt like a new man.

“I could immediately tell a big difference,” he said. “I could eat! I was eating anything they’d bring me. Before that, I wasn’t eating or drinking at all. It was amazing, I felt like I was even ready to get up and start riding my bike again.”

People who undergo an organ transplant of any kind receive immunosuppressants to help reduce the chance that their body will reject their new organ. For the first year, Eddie had to wear a mask everywhere he went to prevent illness while his body accepted the new heart, but after that, he felt he truly was free to live his life again.

“Just to be able to breathe and eat and go up for a walk,” Eddie said. “I walked three or four miles every day for years until my back and legs got in bad shape. I mean it is just remarkable what it did for me, what I could do.”

Twenty-nine years is a long amount of time for a transplanted heart to last. In fact, only about 25% of heart transplant patients survive longer than 20 years.





Grimes has become an advocate for organ donor awareness since his transplant in 1993.

His surgeon, Michael E. Sekela, M.D., now surgical director of heart transplant at the UK HealthCare, feels that treating Eddie for this long has truly benefited him in terms of patient care.

"I have only had a couple of heart transplant patients with me this long," Dr. Sekela said. "And I have had the incredible honor to care for Mr. Grimes and see him every six months for all these years. It has changed the way that I think about patient care, for the better."

This transplant gave Eddie the opportunity to continue working, living, and loving his wife, friends and family.

April is National Donate Life Month. In Kentucky, more than a thousand people are on the waitlist for an organ transplant.

"It has been a true gift of new life," Eddie said. "The things I've seen and friends I've made – I thank the Lord for everything he's done for me."

But one of the greatest blessings of all for Eddie was how he had the chance to see his son grow into the man he is today.

"I've seen him graduate from college and get married," he said. "And I've got grandkids now. There's just so much I have enjoyed that I wouldn't have. And that's a good life."

Eddie says he feels so lucky to have continued doing the things he loves for so long. He goes to church and enjoys traveling to Gatlinburg with his friends. He and Alma loved getting to watch their grandkids excel in their school sporting events, graduate from high school and grow into young adults.

Glenn Grimes was filled with emotion when reflecting on how lucky he has been to have his father in his life all these years.

"We lived at the hospital for about three months when I was in college, right before he got the transplant," Glenn said. "But we've been blessed, I'm so glad he's still here."

And Eddie is here today all thanks to one person who chose to become an organ donor. While their life had been lost, they granted one of the greatest gifts to someone in need.

"If I could talk to the donor family, I would say thank you very much," Eddie said. "The Lord has blessed me with the gift that you all have given me. It is a blessing that this person chose to sign the donor card to give me another chance at life. I've just been blessed."

One organ donor can save up to eight lives. If you are considering becoming an organ donor and are unsure, Eddie Grimes has one thing to say.

"That person's heart is still living inside of me all these years later – that part of him is still alive. Maybe a part of you would be able to live again."

Anyone can sign up to become an organ donor by joining the Kentucky Organ Donor Registry: visit registerme.org or sign up when you renew your driver's license.



MAY HEART WALK

This year, UK had **26 teams** participate in Heart Walk, registered **587 walkers**, and collectively raised over **\$39,000** all to help create **healthier communities** free of heart disease and stroke! In addition, UK walkers recorded over **5300 minutes of exercise**, placing UK HealthCare in **first place** in the **Heart Walk Move More Challenge**! One thing is for certain, when the **Big Blue family** comes together, we do **great** things!

Because of your work, we are on our way to building a **healthier future** for our **family, friends,** and **coworkers**!

Thank you again, We look forward to doing it again in 2023!

Heart Walk Facts

- When you join the Heart Walk, you make a difference from day one.
- You help fund lifesaving science.
- You learn how to live healthier

You join more than a million Heart Walk Heroes in more than 300 locations across the country!

Visit the American Heart Association [Heart Walk](#) page to learn more.



Top 10 Teams

Team Name	Coach	Confirmed Fundraising
UKHC Gill Administration	Rebecca Craft	\$5,965
UKHC IT - SI9	Linda Noffsinger	\$5,175
UKHC Pumped-Up Hearts	Jacob Stone	\$4,431
UKHC N' Syncope	Traci Cook	\$3,240
UKHC HEART WINNERS, not failures	Amber Bach	\$2,603
UKHC Endoscopy Butts N Guts	Crystal Stokes	\$2,012
UKHC Saha CVRC	Hisashi Sawada	\$1,969
UKHC Kentucky Clotters	Jeremy Wood	\$1,762
UKHC UK Lab Services	Janice Goldenberg	\$1,477
UKHC Pharmacy Department	Ashley Schenk	\$1,197



(From left): Mary Sheppard, M.D.; Siby Saha, M.D.; David Minion, M.D.; and Alan Daugherty, Ph.D. Sheppard and Minion will serve as co-directors of the new research center.

JUNE SAHA AORTIC CENTER

LEXINGTON, Ky. (June 2, 2022) — On Monday, May 25, the faculty and administration of the University of Kentucky College of Medicine announced the creation of the [Saha Aortic Center](#), a new research center focused on aortic disease. This new center was established thanks to a generous \$1 million gift from the [Saha Foundation](#).

Housed in the Biomedical Biological Science Research Building on the UK campus, the Saha Aortic Center will promote research and education to advance clinical care for disease of the aorta. Aortic disease can cause the expansion and rupture of a vessel wall in the chest or abdominal area, leading to potentially deadly internal bleeding.

tially deadly internal bleeding.

Alan Daugherty, Ph.D., chair of the Department of Physiology and director of the Saha Cardiovascular Research Center in the UK College of Medicine, will serve as director of the Saha Aortic Center.

“Aortic disease affects the major artery that carries blood from the heart to the rest of the body,” Daugherty said. “Having this center that specifically focuses on research and education in this field is vital.”

David Minion, M.D., program director and UK College of Medicine professor of surgery, and Mary Sheppard, M.D., assistant professor of family and com

munity medicine, surgery and physiology in the UK College of Medicine, will serve as co-directors for the center.

“Dr. Saha has devoted a lifetime of service to the health care needs of Kentucky. The generous gift attests to his and his family’s passion and dedication to our Commonwealth,” Minion said. “I am honored to be a part of this exciting initiative.”

Sheppard founded the UK Aortic Clinic and performs NIH-funded research on Marfan syndrome and genetically based aortic disease. She works closely with vascular surgeons to provide a transdisciplinary team approach for managing patient’s aortic disease.

“This donation from the Saha Foundation is a tremendous gift to the people of Kentucky, as they will not need to leave the state to access the most cutting-edge care for aortic disease,” Sheppard said. “We have one of the largest groups of basic scientists in the world who do research on aortic disease. By facilitating collaboration with our physicians, this gift will position UK to be a premier center for the treatment of people with aortic disease throughout the world.”

“Dr. Saha has devoted a lifetime of service to the health care needs of Kentucky. The generous gift attests to his and his family’s passion and dedication to our Commonwealth,” Minion said. “I am honored to be a part of this exciting initiative.”

The Saha Foundation was established in 1999 by Sibu and Becky Saha. Its mission is to promote research and education of cardiovascular disease in the Commonwealth of Kentucky. The foundation offers many awards and scholarships to scientists, medical students, nurses and other health professionals. A previous gift from the Sahas established the [Saha Cardiovascular Research Center](#).

The couple have considered Lexington home for more than 40 years and remain steadfast in their community involvement and generous philanthropy. Following a distinguished career in private practice, Saha joined the faculty of the UK College of Medicine in 2002 as a professor of surgery in the Division of Cardiothoracic Surgery.

Becky is past president of Friends of the Arboretum. During her tenure as president, Friends of the Arboretum launched a major campaign to establish the Kentucky Children’s Garden, which opened in 2011.

The couple’s daughter, Rani Saha, became president of the Saha Foundation in 2020. Currently, she works in New York City as a motion graphics designer and artist alongside many Fortune 500 companies, post-production and design houses, as well as digital agencies.

Through the Saha Foundation, Sibu and Becky Saha, along with their family, have supported cardiovascular research at the University of Kentucky.



AWARDS

SAHA AWARDS FOR PATIENT-CENTERED CARE

Stacy Ford, RN-Division of Cardiology (pictured below center) was selected to receive the 2022, sixth annual, Saha Award for Patient-Centered Care in the category of **Clinical Care Nurse**. Stacy has spent the last 22 years working with cardiac patients. She is focused on patient education in addition to helping bridge the gaps between our patients providers to achieve optimal management in outcomes. She is passionate to provide exceptional care to all patients she serves and continues to further her career in these services through UK. She received nominations from **Maya Ignaszewski, Navin Rajagopalan, Julia Jones, Annie Sketch, and Emma Birks** for this UK HealthCare honor.

The Saha Award for Patient Centered Care was established to honor four health care providers which exhibited a high sense of professionalism, a moral obligation to patient centered care and the ability to lead by example to advocate a change in the UK HealthCare culture. Our patients deserve the highest level of care possible. The award carries a \$500 prize, made possible by the Saha Foundation, and the award will be presented annually to recognize a staff member who exemplifies UK HealthCare's DIRECT Values and the professional qualities and compassionate service that makes for outstanding patient centered care.





AWARDS

STAR PROGRAM

At UK HealthCare, exceptional service begins and ends with all team members. That's what the STAR program is all about. Whether it's day-to-day accomplishments or above-and-beyond results, we recognize, honor and celebrate the individuals and teams who are at the core of our success. The following received STARS in April, May and June 2022:

GOLD

Dana Moore (Cath Lab Recovery) – Nominated by Maren Schulke

SILVER

Casey Caton (Heart Station) – Nominated by Michelle Harrod
Katelyn Hale (Cath Lab) – Nominated by Mason Vance
Katherine Lopez (Cath Lab) – Nominated by Mason Vance
Thomas Mansfield (Cath Lab) – Nominated by Holly Jude
Melissa McKee (Echo Lab) – Nominated by Leslie Calmes
Melissa McKee (Echo Lab) – Nominated by Larisha Tatum
Melissa McKee (Echo Lab) – Nominated by Melissa Bond
Melissa McKee (Echo Lab) – Nominated by Vicki Petty
Karen Moran (Cath Lab) – Nominated by Mason Vance
April Skaggs (Cath Lab) – Nominated by Mason Vance
Rachel Smitson (Device-GS Recovery) – Nominated by Kathryn McCarty
Larisha Tatum (ECHO) – Nominated by Terry Oplas
Eric Taylor (Cath Lab) – Nominated by Mason Vance
Michael Walls (Cath Lab) – Nominated by Mason Vance

BRONZE

Dee Abrams (Gill Clinic/Ambulatory) – Nominated by Dana Moore
Leslie Calmes (Nuclear) – Nominated by Nicole Golenbiewski
Laura Dinneen (Amb-Peds Cardiology Clinic) – Nominated by Kristopher Cumbermack.
Hannah Edelen (Echo Lab) – Nominated by Melissa McKee
Miriam Lewis (HF/VAD/MCS Team) – Nominated by Brittany Robinson
Melissa McKee (Echo Lab) – Nominated by Tami Neal
Melissa McKee (Echo Lab) – Nominated by Brooke Noplis
Melissa McKee (Echo Lab) – Nominated by Vicky Petty
Nicole Golenbiewski (ECHO) – Nominated by Katie Broadus
Peggy Hardesty (Gill Clinic/Ambulatory) – Nominated by Zulma Arellano
Melissa Lefebvre (Peds Cardiology) – Nominated by Iesha Thompson.
Majd Makhoul (Peds Cardiology) – Nominated by Iesha Thompson.
Tami Neal (Non-Invasive Services) – Nominated by Mary Moreland
Billy Netherland (Echo Lab) – Nominated by Rachel Walker
Vicky Petty (Echo Lab) – Nominated by Melissa McKee
Casey Sparrow (Amb-Peds Cardiology Clinic) – Nominated by Kristopher Cumbermack.
Wen Su (CVRC) – Nominated by Zhenheng Guo
Larisha Tatum (ECHO) – Nominated by Melissa McKee
Iesha Thompson (Amb-Peds Cardiology Clinic) – Nominated by DeShawn Thompson
Janna Villanueva (GS Cardiopulmonary Rehab) – Nominated by Katelyn King
Leah Woods (ECHO) – Nominated by Katie Broadus

To nominate someone for a STAR award, login to starprogram.mc.uky.edu from any internet browser.



AWARDS CONT. GILL RECOGNITION AWARDS

The Gill Recognition Program seeks nominations of staff, faculty, trainee, or an entire area to recognize outstanding work based on one or more of the criteria below.

- Going the extra mile to help colleagues or patients
- Inspiring others
- Preventing a serious adverse event
- Embracing a spirit of constant improvement
- Creating a valuable learning opportunity or environment
- Developing an innovative approach or solution
- Outstanding commitment to a scholarly pursuit

Nominations should include the individual name or area and a brief description of the outstanding work.

The Gill Recognition Award will be awarded monthly. You may open the nomination form on your web browser by clicking the link below: Gill Recognition Program.

If the link above does not work, try copying the link below r:
<https://redcap.uky.edu/redcap/surveys/?s=JFK4EPMJ83>

See past winners here: <https://medicine.uky.edu/departments/internalmedicine/gill-awards>

Congratulations to Cardiovascular Services Outreach Operations Director **Rebecca Craft** (photo left) for receiving the April Gill Recognition Award!

Dr. Sorrell, the acting Chief of Cardiovascular Medicine nominated Dr. Rebecca.

Dr. Sorrell's nomination of Rebecca reads: "Rebecca has been committed to the growth and success of the GHVI since its infancy. Her dedication is recognized across the state where she is seen as the go-to person for all UK questions and proposed relationships or patient needs. It is refreshing to have someone develop their skills so extensively by staying involved in the same mission for so many years."

GILL HEART & VASCULAR INSTITUTE

THE GILL RECOGNITION PROGRAM

APPRECIATE • NOMINATE • CELEBRATE !

Congratulations to Gill Cardio-pulmonary Technician **Casey Caton** (photo middle) for receiving the May 2022 Gill Recognition Award! Casey was recognized by Megan Payne, Non-Invasive Cardiology Ops Supervisor, and Tami Neal, Cardiovascular Noninvasive Operations Director, for his outstanding work.

Here is what Megan and Tami (respectively) had to say about Casey:

"Casey was instrumental in coordinating the replacement of the EKG fleet. Casey tracked every EKG machine enterprise wide, so we knew how many to order. He coordinated with the GE rep and several from the UK organization to receive the new machines, set them up, and get them distributed to their new areas. Without Casey this task would have been daunting and taken significantly more time, and been much less organized."

"The University ordered a complete fleet replacement of the EKG carts. Casey took ownership of the project and communicated with GE, Clinical Engineering, Management, and the departments to assist with the organization and completion of this project. His leadership and organization of the project helped make the transition from the old carts to the new carts a seamless process."

Congratulations to Professor of Cardiovascular Medicine **Dr. Paul Anaya** (photo right) for receiving the June 2022 Gill Recognition Award!

Dr. Sorrell, the acting Chief of Cardiovascular Medicine nominated Dr. Anaya.

Dr. Sorrell's nomination of Dr. Anaya reads:

"Dr. Anaya stepped up and assigned himself to the Moonlighting Overnight Schedule during the 2022 Fellowship Graduation Party so all the fellows could attend graduation. This is "Going the extra mile to help colleagues"

Apologies as the website is still being updated. Photos of Gill Recognition Award winners can be found here: <https://medicine.uky.edu/departments/internalmedicine/gill-awards>

Academic Fiscal Year
FY 2022

College or Unit
College of Medicine

College or Unit Department
All

Source of Funding
All

FY 2013 - 2022
TOTAL AWARDS (\$), 10-YEAR TREND
FY CHANGE (%)



\$199,515,815

AWARDS (\$)



-\$33.3M

887

AWARDS



-23

320

PRINCIPAL INVESTIGATORS



-12

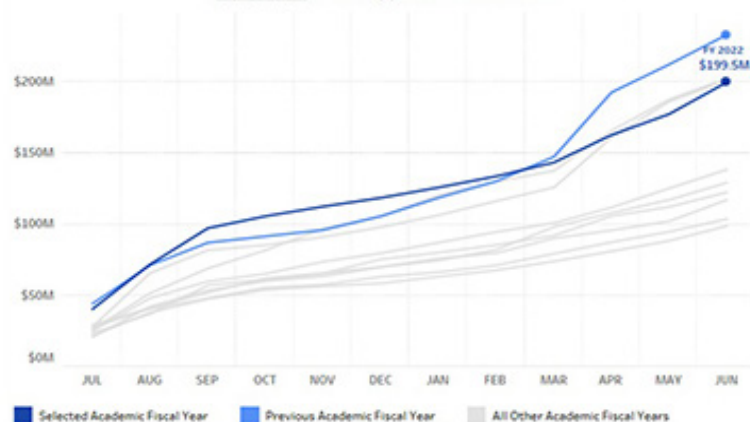
324

SPONSORS

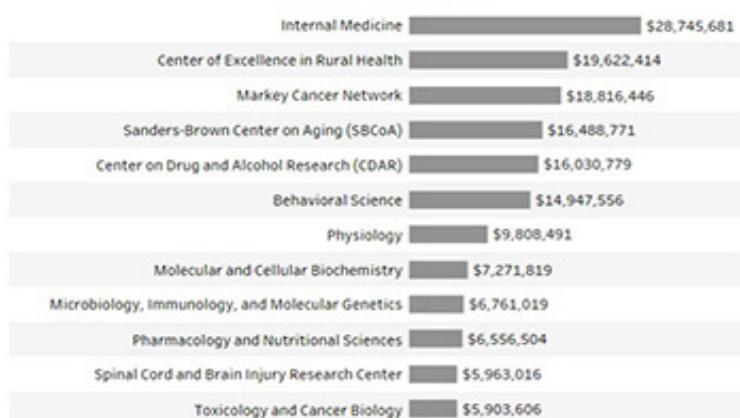


-11

FY 2022
CUMULATIVE AWARDS (\$) RECEIVED BY MONTH



FY 2022
HIGHEST FUNDED DEPARTMENTS



Source: University of Kentucky, Office of Sponsored Projects Administration (OSPA) Database
Compiled by: University of Kentucky, Office of the Vice President for Research

Accessed: 7/14/2022 1:52:42 PM
Data Updated: 4th day of every month at 6:00 AM

Doug Andres

RIT1-Mediated Protection Following Traumatic Brain Injury
National Institute of Neurological Disorders & Stroke
02/15/2018-01/31/23

An Innovative Therapeutic Approach to Treat Cardiomyopathy
Army Medical Research and Materiel Command
07/01/20-06/30/23

Ken Campbell

Multiscale Modeling of Inherited Cardiomyopathies and Therapeutic Interventions
National Heart Lung and Blood Institute
08/03/17-07/31/23

Data-driven Optimization of Therapy for Heart Failure
National Heart Lung and Blood Institute
05/01/22- 04/30/26

Length-Dependent Activation in Human Myocardium
National Heart Lung and Blood Institute
09/15/20- 07/31/24

Dual Filament Control of Myocardial Power and Hemodynamics
University of Missouri
08/25/20- 07/31/24

Multiscale Models of Proprioceptive Encoding to Reveal Mechanisms of Impaired Sensorimotor Control
Emory University
07/01/21- 03/31/26

Computer Modeling of Myosin Binding Protein C and its Effect on Cardiac Contraction
Case Western Reserve
04/01/19-03/31/23

Thick-Filament Regulation In Human Heart Failure
Washington State University
07/01/19-06/30/22

Awards for members of Gill Heart & Vascular Institute total over \$33 Mil per year!

Lisa Cassis

Center of Research in Obesity and Cardiovascular Disease COBRE
Core A: Admin
Core National Institute of General Medical Sciences
09/08/08-07/31/23

Supplemental Environmental Project Compliance Assistance Tools and Services
KY Department of Environmental Protection
07/01/07-12/31/23

EPSCoR Administrative
KY Economic Development Cab
02/01/19-06/30/22

Sex Differences in Angiotensin-Induced Vascular Diseases
National Heart Lung and Blood Institute
03/21/12-05/31/22

RESEARCH FUNDING CONTINUED

Alan Daugherty

University of Kentucky- Baylor
College of Medicine Aortopathy Research Center
American Heart Association
04/01/18-03/31/23

JMJD3 Regulates Abdominal Aortic
Aneurysm Expansion
University of Michigan
04/01/21- 03/31/25

Determinants of Aorta Heterogeneity
National Heart Lung and Blood
Institute
06/01/21-05/31/28

Macrophage Migration Inhibitory
Factor and Urinary Pain
Lexington Biomedical Research
Institute
07/01/19-06/30/23

*Internal Medicine is currently the
highest funded division in the College of Medicine..*

Brian Delisle

Transcriptional Regulation of
KCNH2
National Heart Lung and Blood
Institute
03/08/19-02/28/23

Circadian Clock Regulation of Myocardial Ion Channel Expression and Function
University of Florida
09/01/20- 05/31/22

Toward Early Diagnosis of Long QT Syndrome Using Machine Learning and Molecular Dynamics Simulation of KCNH2
Loyola University
01/01/21- 12/31/22

Florin Despa

The Amylin Dyshomeostasis Hypothesis of Vascular Contributions to Cognitive Impairment and Dementia (VCID)
National Institute of Neurological Disorders & Stroke
04/01/20-03/31/25

Programing Amylin Secretion to Slow Brain Aging - An Animal Model
National Institute on Aging
09/15/17- 04/30/23

Role of Systemic Amylin Dyshomeostasis in Alzheimer's Disease
National Institute on Aging
09/15/16- 05/31/22

Sanda Despa

Role of Myocyte Na⁺ Dysregulation in Diabetic Heart Disease
National Heart Lung and Blood
Institute
08/01/17- 07/31/22

Cardiovascular Consequences of Gestational Diabetes; Role of Amylin
American Heart Association
07/01/19-06/30/22

Mechanisms of Cardiac Remodeling Triggered by Gestational Diabetes
National Heart Lung and Blood
Institute
05/01/20-04/30/24

Ming Gong

Targeting GLP-1 Receptor as a New Chronotherapy Against Nondipping Blood Pressure in Diabetes
National Heart Lung and Blood
Institute
06/15/22- 05/31/26

Targeting Timing of Food Intake as a Novel Strategy against Disruption of Blood Pressure Circadian Rhythm in Diabetes
National Heart Lung and Blood
Institute
01/15/19-10/31/22

A Novel Mechanism by which Smooth Muscle BMAL1 Regulates IL-6 and Sexual Dimorphism of Abdominal Aortic Aneurysm
National Heart Lung and Blood
Institute
08/20/18-07/31/22

Scott Gordon

The Role of High Density Lipoprotein Associated Protease Inhibitor Activity in Protection Against Atherosclerosis.
National Heart Lung and Blood
Institute
08/20/18-07/31/22

RESEARCH FUNDING CONTINUED

High Density Lipoprotein Targeting
Protease Inhibitors for Preservation
of Lung Function
Alpha One Foundation Incorporated
07/01/21-06/30/23

Identifying Pharmacokinetic Mark-
ers to Predict Altered Lipoprotein
Kinetics in the Vascepa to Accelerate
Lipoprotein Uptake and Elimination
(VALUE) Study
Amarin Pharma Incorporated
07/30/21-07/30/22

Gregory Graf
Contributions of hepatic and intesti-
nal pathways to cholesterol excretion
National Institute Diabetes & Digestive
& Kidney
09/13/17-07/31/23

Bernhard Hennig
2021 Central and Eastern European
Conference on Health and the Environ-
ment
National Institute of Environmental
Health Sciences
09/01/21- 08/31/22

Xiangang Li
Relative Adrenal Insufficiency is a
Risk Factor and an Endotype for
Sepsis
National Institute of General Medical
Sciences
05/01/21- 04/30/26

Mechanism of Adrenal Insufficiency
as A Risk Factor for Sepsis
National Institute of General Medi-
cal Sciences
09/01/17-08/31/22

Synthetic HDL a Potential Sepsis
Therapy
National Institute of General Medi-
cal Sciences
11/01/15-05/31/22

Analia Loria
Effect of Early Life Stress on Obesi-
ty-Induced Hypertension in Mice
National Heart Lung and Blood
Institute
12/01/17-11/30/22

Hong Lu
Atherosclerosis Mechanisms: An-
giotensin II Production and Action
National Heart Lung and Blood
Institute
05/01/18-03/31/23

Debra Moser
Rural Intervention for Caregivers'
Heart Health (RICHH)
National Institute of Nursing Re-
search
09/26/16-06/30/22

Online Cognitive Behavioral
Therapy for Depressive Symptoms
in Rural Coronary Heart Disease
Patients
Patient Centered Outcomes Re-
search Institute
10/01/2020 to 09/30/24

Gia Mudd-Martin
Corazón de la Familia (Heart of the
Family)
National Institute of Nursing Re-
search
03/02/17-01/31/23

Heart of the Family: A Cardiovas-
cular Disease and Type 2 Diabetes

Timothy Mullett
Effectiveness and Implementation
of a Health System Intervention to
Improve Quality of Cancer Care for
Rural, Underserved Patients
University of Iowa
04/01/21-03/31/26

Kentucky Lung Cancer Survivorship
Program
Bristol Myers Squibb Foundation
Incorporated
09/01/14- 12/31/22

Mariana Nikolova-Karakashian
Ceramide and Acute Phase Proteins
Elevation During Aging
National Institute on Aging
08/01/02-05/31/23

Jonathan Satin
An Innovative Therapeutic Approach
to Treat Cardiomyopathy
Army Medical Research and Materiel
Command
07/01/20- 6/30/23

Nancy Schoenberg
Community to Clinic Navigation to
Improve Diabetes Outcomes
National Institute Diabetes & Digestive
& Kidney
08/01/17-07/31/23

Implementing an Evidence-Based
mHealth Diet and Activity interven-
tion: Make Better Choices 2 for Rural
Appalachians
National Heart Lung and Blood
Institute
08/01/20- 04/30/25

RESEARCH FUNDING CONTINUED

Venkateswaran Subramanian

Calpains and Abdominal Aortic Aneurysms

National Heart Lung and Blood Institute

08/10/17-07/31/22

Role of miR-146a in Abdominal Aortic Aneurysm

National Heart Lung and Blood Institute

01/01/22- 12/31/25

Ryan Temel

TRAF6 Nanoimmunotherapy to Resolve Plaque Inflammation

Mount Sinai

08/15/18-06/30/22

Therapeutic Targeting of Metabolic microRNAs as a New Treatment Paradigm for NASH

Aalborg University

01/01/19-12/31/24

Dongfang Wang

SBIR Development of a Minimally Invasive Single Cannulation, Compact Single Port Pulsatile Ventricular Assist Device (sppVAD) for Total LV Support

W-Z Biotech LLC

10/01/21- 09/30/22

Development of a Paracorporeal Pump-Integrated Artificial Lung for Transport of Warfighters with Acute Respiratory Distress Syndrome (ARDS)

Army Medical Research and Materiel Command

08/15/19 -08/14/22

SBIR: Development of a TransApical to Aorta Double Lumen Cannula for a Neonate LVAD

W-Z Biotech LLC

04/01/19-07/31/22

Shuxia Wang

Role of SMPDL3B in Obesity-Associated Non-Alcoholic Fatty Liver Disease

07/01/22- 04/30/27

Christopher Mark Waters

Biophysical Mechanisms of Hypoxia-Induced Lung injury

National Heart Lung and Blood Institute

04/15/20- 03/31/24

Jonathan Wenk

Force Validated Heart Valve Surgical Planning Tool

University of Arkansas

09/01/19- 08/31/22

Sidney Whiteheart

Platelet Exocytosis and Endocytosis in Thrombosis and Immunity

National Heart Lung and Blood Institute

04/01/20-03/31/28

Covid 19: Researching COVID To Enhance Recovery: IDEA States Consortium for clinical REsearch

(ISCORE) Network

West Virginia University

10/01/22-05/23/22

09/01/21-05/30/25

Structure/Function Determinants of Puncture Wound Thrombus Formation

University of Arkansas Medical Sciences

09/01/21-05/30/25

Regulatory Mechanisms of Glycoprotein Sialylation

Case Western Reserve

01/01/21-11/30/24

Jeremy Wood

Coordination of the TFPI/Protein S and APC/Protein S Anticoagulant Systems

Pfizer Inc

06/22/21-05/31/23

SEMINARS AND JOURNAL CLUBS

* Check website for details.

Cardiovascular Seminar Series

Fridays at 8:00 am

This forum brings to campus prominent external speakers and provides presentations by UK faculty to ensure their research expertise is widely known.

<https://cvrc.med.uky.edu/cvrc-current-seminar-schedule>

Cardiovascular Journal Club

Tuesdays at 8:00 am

Presenters in this forum discuss specific citations including basis for this publication's selection, strengths and weaknesses, from the perspective as if he/she were the original reviewer. For more information contact:

Greg Graf, Ph.D. or Ryan Temel, Ph.D.

<https://cvrc.med.uky.edu/cvrc-current-journal-club-schedule>

Blood Cell Journal Club

4th Friday of each month at 4:00 pm

The journal club was started a number of years ago in an effort to provide a focal point for the hemostasis community at UK. The focus is usually on platelets but they also discuss papers on Coagulation and Immune responses.

<https://cvrc.med.uky.edu/cvrc-blood-cell-journal-club-2018>

Cardiovascular Seminar Series for Today's Clinician-Scientists

TODD 170

Noon- 12:50 PM and Zoom

Speakers will discuss late-breaking research, critical review of the guidelines, and other relevant cardiovascular topics. These presentations are expected to deliver knowledge and strategies that directly result in changes in practice that can improve patient outcomes. CMEs available.

Thursday 9/29/2022 TBD

Thursday 10/27/2022 Speaker: Hakan Oral, MD
Frankel Cardiovascular Center
University of Michigan Health
Title: ABCs of AF

Thursday 12/1/2022 - TBD

Please RSVP to cmcmu2@uky.edu if attending in-person for lunch.

PUBLICATIONS

APRIL- JUNE

Abe T, Olanipekun T, Igwe J, Ndausung U, Amah C, Chang A, Effoe V, et al. (**Ogunbayo G**). Incidence and predictors of sudden cardiac arrest in the immediate post-percutaneous coronary intervention period for ST-elevation myocardial infarction: a single-center study. *Coron Artery Dis*. 2022 Jun 1;33(4):261-268. doi: 10.1097/MCA.0000000000001119.

Abouleisa RRE, Salama ABM, Ou Q, Tang XL, Solanki M, Guo Y, Nong Y, et al. (**Satin J**). Transient Cell Cycle Induction in Cardiomyocytes to Treat Subacute Ischemic Heart Failure. *Circulation*. 2022 Apr 26;145(17):1339-1355. doi: 10.1161/CIRCULATIONAHA.121.057641.

Adegboyega A, Aroh A, Williams LB, **Mudd-Martin G**. Social support and cervical cancer screening among sub-Saharan African immigrant (SAI) women. *Cancer Causes Control*. 2022 Jun;33(6):823-830. doi: 10.1007/s10552-022-01577-8.

Ahmed T, Honaker O, **Misumida N**, **Messerli AW**. Spontaneous Coronary Artery Dissection (SCAD) complicated with post-infarction ventricular septal rupture and a comparative review on mechanical complications related with SCAD. *Curr Probl Cardiol*. 2022 Apr 29;101229. doi: 10.1016/j.cpcardiol.2022.101229.

Al-Abdoun A, Abusnina W, Mhanna M, Radideh Q, Alzu H, Rmilah AA, Jabri A, et al. (**Alnabelsi T**). P2Y₁₂ Inhibitors versus Aspirin Monotherapy for Long-term Secondary

Prevention of Atherosclerotic Cardiovascular Disease Events: A Systematic Review and Meta-analysis. *Curr Probl Cardiol*. 2022 Jun 25;101292. doi: 10.1016/j.cpcardiol.2022.101292.

Ali HR, Kassi M, Agrawal T, Shah DJ, **Alnabelsi T**, El-Tallawi C, Al-Mallah M, Bhimaraj A. Inflammatory Cardiomyopathies: A Need to Identify Indolent Inflammation. *JACC Case Rep*. 2022 May 18;4(10):632-638. doi: 10.1016/j.jaccas.2022.03.020.

Alnabelsi T, Ahmed AI, Han Y, Al Rifai M, Nabi F, Cainzos-Achirica M, Al-Mallah MH. Added Prognostic Value of Plaque Burden to Computed Tomography Angiography and Myocardial Perfusion Imaging in Patients with Diabetes. *Am J Med*. 2022 Jun;135(6):761-768.e7. doi: 10.1016/j.amjmed.2021.12.010.

Anzellini S, Errandonea D, Burakovsky L, Proctor JE, Turnbull R, **Beavers CM**. Characterization of the high-pressure and high-temperature phase diagram and equation of state of chromium. *Sci Rep*. 2022 Apr 25;12(1):6727. doi: 10.1038/s41598-022-10523-2.

Araujo N, Sledziona J, Noothi SK, Burikhanov R, Hebbar N, Ganguly S, Shrestha-Bhattarai T, et al. (**Cassis LA**, **Nikolova-Karakashian M**). Tumor Suppressor Par-4 Regulates Complement Factor C3 and Obesity. *Front Oncol*. 2022 Mar 29;12:860446. doi: 10.3389/fonc.2022.860446.

Aronoff-Spencer E, McComsey M, Chih MY, Hubenko A, Baker C, Kim J, Ahern DK, et al. (**Mullett TW**). Designing a Framework for Remote Cancer Care Through Community Co-design: Participatory Development Study. *J Med Internet Res*. 2022 Apr 12;24(4):e29492. doi: 10.2196/29492.

Arshad S, **Davis GA**, Amir M, Goldberg YH, **Gupta VA**, Abdel-Latif AK, Smyth S. Trends and Outcomes of Oral Anticoagulation With Direct Current Cardioversion for Atrial Fibrillation/Flutter at an Academic Medical Center. *Cardiol Res*. 2022 Apr;13(2):88-96. doi: 10.14740/cr1352.

Arshad S, Khan S, **Karim A**, **Gupta VA**. The burden of malnutrition & frailty in patients with coronary artery disease: An under-recognized problem. *JRSM Cardiovasc Dis*. 2022 May 26;11:20480040221102741. doi: 10.1177/20480040221102741

Aru RG, Chishti EA, Alagusundaramoorthy SS, **Gurley JC**, **Endean ED**. The inside-out technique is safe and effective for thoracic central venous obstruction. *J Vasc Surg Venous Lymphat Disord*. 2022 May 10:S2213-333X(22)00191-3. doi: 10.1016/j.jvsv.2022.03.012.

Aru RG, **Tyagi SC**. Endovascular treatment of femoropopliteal arterial occlusive disease: Current techniques and limitations. *Semin Vasc Surg*. 2022 Jun;35(2):180-189.

PUBLICATIONS CONTINUED

Backer CL. Commentary: One-patch, two-patch, V-patch? *J Thorac Cardiovasc Surg.* 2022 May 12;S0022-5223(22)00541-4. doi: 10.1016/j.jtcvs.2022.05.011.

Backer CL. Commentary: Slide tracheoplasty: The power of numbers. *J Thorac Cardiovasc Surg.* 2022 Jun;163(6):2229-2230. doi: 10.1016/j.jtcvs.2021.11.006.

Backer CL. CT imaging for pulmonary artery sling with tracheal stenosis and hypoplastic right lung. *Eur J Cardiothorac Surg.* 2022 May 27;61(6):1298. doi: 10.1093/ejcts/ezac127.

Backer CL. Regionalization Equals Excellence in Pediatric Tracheal Surgery. *Ann Thorac Surg.* 2022 Apr;113(4):1306. doi: 10.1016/j.athoracsur.2021.04.087.

Beavers CJ, Effoe SA, Dobesh PP. Selatogrel: A Novel Subcutaneous P2Y₁₂ Inhibitor. *J Cardiovasc Pharmacol.* 2022 Feb 1;79(2):161-167. doi: 10.1097/FJC.0000000000001079.

Beavers CJ, Rodgers JE, Bagnola AJ, Beckie TM, Campia U, Di Palo KE, Okwuosa TM, Przespolewski ER, Dent S; American Heart Association Clinical Pharmacology Committee and Cardio-Oncology Committee of the Council on Clinical Cardiology and Council on Genomic and Precision Medicine; and the Council on Peripheral Vascular Disease. Cardio-Oncology Drug Interactions: A Scientific Statement From the American Heart Association. *Circulation.*

2022 Apr 12;145(15):e811-e838. doi: 10.1161/CIR.0000000000001056.

Bei Y, **Lu HS**, Zhong J. Editorial: Cardiovascular Fibrosis and Related Diseases: Basic and Clinical Research Advances. *Front Cardiovasc Med.* 2022 Mar 24;9:879780. doi: 10.3389/fcvm.2022.879780.

Bergmann LL, **Hobbs S.** Beyond the AJR: The Impact of Screening Population in Lung Cancer Overdiagnosis. *AJR Am J Roentgenol.* 2022 May 25. doi: 10.2214/AJR.22.27970.

Brady V, Whisenant M, Wang X, Ly VK, Zhu G, **Aguilar D**, Wu H. Characterization of Symptoms and Symptom Clusters for Type 2 Diabetes Using a Large Nationwide Electronic Health Record Database. *Diabetes Spectr.* 2022 Spring;35(2):159-170. doi: 10.2337/ds21-0064.

Cameli M, **Birks EJ**, Landra F. Editorial: Highlights in Heart Failure and Transplantation in 2021. *Front Cardiovasc Med.* 2022 Mar 25;9:877515. doi: 10.3389/fcvm.2022.877515.

Campbell KS. An expanding explanation for the ascending limb of muscle's active force-length relationship. *Biophys J.* 2022 May 17;121(10):1787-1788. doi: 10.1016/j.bpj.2022.04.014.

Chang YW, Levy B, Yackzan D, Thomas S, **Davenport DL**, Beck S, Bhakta A. Total Psoas Area is a Measure for Deconditioning in Colorectal Surgery Patients. *Am Surg.* 2022

Jun 6;31348221105561. doi: 10.1177/00031348221105561.

Chao LF, H ang TY, **Moser DK**, Chung FF, Lau YT, Xiao X. Development and Pilot Testing of a Non-stress Test Virtual Reality Simulator. *Comput Inform Nurs.* 2022 Jun 1;40(6):357-361. doi: 10.1097/CIN.0000000000000878.

Chen D, **Bhopalwala H, Dewaswala N**, Arunachalam SP, Enayati M, Farahani NZ, Pasupathy K, *et al.* Deep Neural Network for Cardiac Magnetic Resonance Image Segmentation. *J Imaging.* 2022 May 23;8(5):149. doi: 10.3390/jimaging8050149.

Chen J, Ahmed T, Ahmed T, Iravarapu C, **Arbune A.** Multimodality Imaging Guided Diagnosis and Treatment Response Evaluation in a Patient with Lymphoma with Right Atrioventricular Involvement. *Curr Probl Cardiol.* 2022 Jun 2;101273. doi: 10.1016/j.cpcardiol.2022.101273.

Daugherty A. Recipients of the 2022 Early Career Investigator Awards. *Arterioscler Thromb Vasc Biol.* 2022 May;42(5):515. doi: 10.1161/ATVBAHA.122.317432.

Daugherty A, Hegele RA, Lu HS, Mackman N, Rader DJ, Weber C. Web of Science's Citation Median Metrics Overcome the Major Constraints of the Journal Impact Factor. *Arterioscler Thromb Vasc Biol.* 2022 Apr;42(4):367-371. doi: 10.1161/ATVBAHA.122.317426.

PUBLICATIONS CONTINUED

Dellafiore F, **Chung ML**, Alvaro R, Zeffiro V, Ercole V, Pucciarelli G. Influence of mutuality on quality of life in heart failure patient with inadequate self-care and caregiver dyads: an actor-partner interdependence model analysis. *Eur J Cardiovasc Nurs*. 2022 Jun 2;21(4):366-373. doi: 10.1093/eurjcn/zvab089.

Derringer JC, **Biddle MJ**. Potential directions for farm stress research: A systematic review of educational interventions to reduce psychosocial stress among farm and rural populations. *J Rural Health*. 2022 Jun;38(3):554-573. doi: 10.1111/jrh.12633.

Egly CL, Blackwell DJ, Schmeckpeper J, **Delisle BP**, Weaver CD, Knollmann BC. A High-Throughput Screening Assay to Identify Drugs that Can Treat Long QT Syndrome Caused by Trafficking-Deficient KV11.1 (hERG) Variants. *Mol Pharmacol*. 2022 Apr;101(4):236-245. doi: 10.1124/molpharm.121.000421.

Essigmann HT, Hanis CL, DeSantis SM, Perkison WB, **Aguilar DA**, Jun G, Robinson DA, Brown EL. Worsening Glycemia Increases the Odds of Intermittent but Not Persistent *Staphylococcus aureus* Nasal Carriage in Two Cohorts of Mexican American Adults. *Microbiol Spectr*. 2022 May 18:e0000922. doi: 10.1128/spectrum.00009-22.

Ferraris VA. Are There Risk Differences Among Various Anatomic Lobectomies? *Ann Thorac Surg*. 2022 Apr 20:S0003-4975(22)00535-5.

Ferraris VA. On-Pump vs Off-Pump CABG-What Should Programs Do to Improve Off-Pump CABG Results? *Ann Thorac Surg*. 2022 Jun;113(6):1998-1999. doi: 10.1016/j.athoracsur.2021.07.065.

Fertig B, Ling J, Nollet EE, Dobi S, Busiau T, Ishikawa K, Yamada K, et al. (**Campbell KS, Birks EJ**). SUMOylation does not affect cardiac troponin I stability but alters indirectly the development of force in response to Ca²⁺. *FEBS J*. 2022 May 27. doi: 10.1111/febs.16537.

Gerrald JE, Ather A, Schadler A, **Birks EJ, Kolodziej AR**, Kuan W. Retrospective Review of Secondary Prevention Strategies for Gastrointestinal Bleeding and Associated Clinical Outcomes in Left Ventricular Assist Device Patients. *Artif Organs*. 2022 May 16. doi: 10.1111/aor.14316.

Ghosh R, Gillaspie JJ, **Campbell KS**, Symons JD, Boudina S, Pattison JS. Chaperone Mediated Autophagy Protects Cardiomyocytes Against Hypoxic-Cell Death. *Am J Physiol Cell Physiol*. 2022 May 18. doi: 10.1152/ajpcell.00369.2021.

Heidenreich PA, Bozkurt B, **Aguilar D**, Allen LA, Byun JJ, Colvin MM, Deswal A, et al. 2022 AHA/ACC/HFSA Guideline for the Management of Heart Failure: Executive Summary: A Report of the American College of Cardiology/American Heart Association Joint Committee on Clinical Practice Guidelines. *Circulation*. 2022 Apr 1;101161CIR0000000000001062.

Heidenreich PA, Bozkurt B, **Aguilar D**, Allen LA, Byun JJ, Colvin MM, Deswal A et al. 2022 AHA/ACC/HFSA Guideline for the Management of Heart Failure: Executive Summary: A Report of the American College of Cardiology/American Heart Association Joint Committee on Clinical Practice Guidelines. *J Am Coll Cardiol*. 2022 May 3;79(17):1757-1780. doi: 10.1016/j.jacc.2021.12.011.

Heidenreich PA, Bozkurt B, **Aguilar D**, Allen LA, Byun JJ, Colvin MM, Deswal A, et al. 2022 AHA/ACC/HFSA Guideline for the Management of Heart Failure: A Report of the American College of Cardiology/American Heart Association Joint Committee on Clinical Practice Guidelines. *J Am Coll Cardiol*. 2022 May 3;79(17):e263-e421. doi: 10.1016/j.jacc.2021.12.012.

Heidenreich PA, Bozkurt B, **Aguilar D**, Allen LA, Byun JJ, Colvin MM, Deswal A, et al. 2022 AHA/ACC/HFSA Guideline for the Management of Heart Failure: Executive Summary: A Report of the American College of Cardiology/American Heart Association Joint Committee on Clinical Practice Guidelines. *Circulation*. 2022 May 3;145(18):e876-e894. doi: 10.1161/CIR.0000000000001062.

Heidenreich PA, Bozkurt B, **Aguilar D**, Allen LA, Byun JJ, Colvin MM, Deswal A, et al. 2022 AHA/ACC/HFSA Guideline for the Management of Heart Failure: A Report of the American College of Cardiology/American Heart Association Joint Committee on Clinical Practice Guidelines. *Circulation*. 2022

PUBLICATIONS CONTINUED

May 3;145(18):e895-e1032. doi: 10.1161/CIR.0000000000001063.

Heo S, **Lennie TA**, **Moser DK**, Dunbar SB, Pressler SJ, Kim J. Testing of a health-related quality of life model in patients with heart failure: A cross-sectional, correlational study. *Geriatr Nurs*. 2022 Mar-Apr;44:105-111. doi: 10.1016/j.gerinurse.2022.01.008.

Herum KM, Weng G, Kahnert K, Waikel R, Milburn G, Conger A, Anaya P, et al. (**Campbell KS**). Cardiac fibroblast sub-types in vitro reflect pathological cardiac remodeling in vivo. *Matrix Biol Plus*. 2022 Jun 6;15:100113. doi: 10.1016/j.mplus.2022.100113.

Hill MC, Kadow ZA, Long H, Morikawa Y, Martin TJ, **Birks EJ**, **Campbell KS**, et al. Integrated multiomic characterization of congenital heart disease. *Nature*. 2022 Jun 22. doi: 10.1038/s41586-022-04989-3.

Hubbard WB, Sim MMS, Saatman KE, Sullivan PG, **Wood JP**. Tissue factor release following traumatic brain injury drives thrombin generation. *Res Pract Thromb Haemost*. 2022 Jun 8;6(4):e12734. doi: 10.1002/rth2.12734.

Jagielski SM, Noel ZR, Gale SE, Cain J, **Macaulay TE**. An inter-institutional PharmD elective course and qualitative analysis exploring student engagement and collaboration. *Curr Pharm Teach Learn*. 2022 Mar;14(3):359-365. doi: 10.1016/j.cptl.2022.01.018.

Ji A, Trumbauer AC, Noffsinger VP, Jeon H, Patrick AC, **De Beer FC**, **Webb NR**, **Tannock LR**, Shridas P. Serum Amyloid A is not obligatory for high-fat, high-sucrose, cholesterol-fed diet-induced obesity and its metabolic and inflammatory complications. *PLoS One*. 2022 Apr 18;17(4):e0266688. doi: 10.1371/journal.pone.0266688.

Joung RH, Nelson H, **Mullett TW**, Kurtzman SH, Shafir S, Harris JB, Yao KA, et al. A national quality improvement study identifying and addressing cancer screening deficits due to the COVID-19 pandemic. *Cancer*. 2022 Jun 1;128(11):2119-2125. doi: 10.1002/cncr.34157.

Karim AM, **Stoner BJ**, **Eason JH**, **Gurley JC**, **Leventhal AR**. Novel Approach to Percutaneous Closure of an RCA Fistula via the Coronary Sinus. *JACC Cardiovasc Interv*. 2022 Mar 23;S1936-8798(22)00421-6. doi: 10.1016/j.jcin.2022.01.299.

Kenneally AM, Warriner Z, Van-Hoose JD, Ali D, McCleary EJ, **Davenport DL**, Parli SE. Evaluation of Antibiotic Duration after Surgical Debridement of Necrotizing Soft Tissue Infection. *Surg Infect (Larchmt)*. 2022 May;23(4):357-363. doi: 10.1089/sur.2021.256.

Key KV, Estus S, **Lennie TA**, Linares AM, Mudd-Martin G. Experiences of ethnic discrimination and COMT rs4680 polymorphism are associated with depressive symptoms in Latinx adults at risk for cardiovascular disease. *Heart Lung*. 2022 Apr

28;55:77-81. doi: 10.1016/j.hrtlung.2022.04.012.

Kurlansky PA, O'Brien SM, Vasileva CM, Lobdell KW, Edwards FH, Jacobs JP, Wyler von Ballmoos M, et al. (**Ferraris VA**). Failure to Rescue: A New Society of Thoracic Surgeons Quality Metric for Cardiac Surgery. *Ann Thorac Surg*. 2022 Jun;113(6):1935-1942. doi: 10.1016/j.athoracsur.2021.06.025.

Kwak MJ, Chang M, Chiadika S, **Aguilar D**, Avritscher E, Deshmukh A, Goyal P, et al. Healthcare Expenditure Associated With Polypharmacy in Older Adults With Cardiovascular Diseases. *Am J Cardiol*. 2022 Apr 15;169:156-158. doi: 10.1016/j.amjcard.2022.01.012.

Leachman JR, Cincinelli C, Ahmed N, Dalmasso C, Xu M, Gatineau E, Nikolajczyk BS, et al. (**Yian-nikouris F**, **Loria AS**). Early life stress exacerbates obesity in adult female mice via mineralocorticoid receptor-dependent increases in adipocyte triglyceride and glycerol content. *Life Sci*. 2022 Jun 14;120718. doi: 10.1016/j.lfs.2022.120718.

Leachman JR, Heier K, Lei F, Ahmed N, Dalmasso C, **Duncan MS**, **Loria AS**. Sex and race define the effects of adverse childhood experiences on self-reported BMI and metabolic health biomarkers. *Biol Sex Differ*. 2022 Jun 15;13(1):29. doi: 10.1186/s13293-022-00439-x.

PUBLICATIONS CONTINUED

Liljeroos MA, Miller JL, **Lennie TA, Chung ML**. Quality of life and family function are poorest when both patients with heart failure and their caregivers are depressed. *Eur J Cardiovasc Nurs*. 2022 Apr 9;21(3):220-226. doi: 10.1093/eurjcn/zvab071.

Lodhi SH, **Nandavaram S, Malyala R**, Anstead M, **Keshavamurthy S**. Double Lung Transplantation Bridged With Direct Central Ambulatory Veno-Arterial Extracorporeal Membrane Oxygenation in a Pulmonary Hypertension Patient With Extreme Mediastinal Shift. *Cureus*. 2022 Mar 11;14(3):e23070. doi: 10.7759/cureus.23070. e

Lu HS, Daugherty A. Key Factors for Improving Rigor and Reproducibility: Guidelines, Peer Reviews, and Journal Technical Reviews. *Front Cardiovasc Med*. 2022 Mar 9;9:856102. doi: 10.3389/fcvm.2022.856102.

McAtee EE, Talukder AM, **Davenport DL**, Bhakta AS, Patel JA. A Review of Quality Improvement Process Measures for Colorectal Surgery in the United States Using the American College of Surgeons National Surgical Quality Improvement Program Database - Have We Made Progress? *Am Surg*. 2022 May 10;31348221101523. doi: 10.1177/00031348221101523.

Madujibeya I, **Chung ML, Moser DK**, Miller JA, **Lennie TA**. Self-reported engagement in exercise is associated with longer event-free survival in heart failure patients with

poor functional capacity. *Eur J Cardiovasc Nurs*. 2022 Jun 7;zvaco44. doi: 10.1093/eurjcn/zvaco44.

Messerli FH, Muiesan ML, **Messerli AW**. Sutton's law and dietary Na⁺/K⁺ intake in cardiovascular disease. *Eur Heart J*. 2022 Jun 21;ehac283. doi: 10.1093/eurheartj/ehac283.

Milburn GN, Moonschi F, White AM, Thompson M, Thompson K, **Birks EJ, Campbell KS**. Prior Freezing Has Minimal Impact on the Contractile Properties of Permeabilized Human Myocardium. *J Am Heart Assoc*. 2022 May 10:e023010. doi: 10.1161/JAHA.121.023010.

Minhas AMK, **Bhopalwala HM, Dewaswala N**, Salah HM, Khan MS, Shahid I, Biegus J, *et al*. Association of Non-Alcoholic Fatty Liver Disease with In-Hospital Outcomes in Primary Heart Failure Hospitalizations with Reduced or Preserved Ejection Fraction. *Curr Probl Cardiol*. 2022 Apr 8;101199. doi: 10.1016/j.cpcardiol.2022.101199.

Minhas AMK, Mahmood Shah SM, Shahid I, Siddiqi TJ, Arshad MS, Jain V, Ullah W, *et al*. (**Bhopalwala HM, Dewaswala N**). Utilization of Implantable Cardioverter-Defibrillators in Patients With Heart Transplant (from National Inpatient Sample Database). *Am J Cardiol*. 2022 May 17:S0002-9149(22)00403-9. doi: 10.1016/j.amjcard.2022.03.051.

Montasser ME, Aslibekyan S, Srinivasasainagendra V, Tiwari HK, Patki

A, Bagheri M, Kind T, *et al*. (**Arnett DK**). An Amish founder population reveals rare-population genetic determinants of the human lipidome. *Commun Biol*. 2022 Apr 7;5(1):334. doi: 10.1038/s42003-022-03291-2.

Muratoglu SC, Charette MF, Galis ZS, Greenstein AS, **Daugherty A**, Joutel A, Kozel BA, *et al*. Perspectives on Cognitive Phenotypes and Models of Vascular Disease. *Arterioscler Thromb Vasc Biol*. 2022 May 5;101161ATVBAHA122317395. doi: 10.1161/ATVBAHA.122.317395.

Nandavaram S, Chandrashekar S, Gelman AE. Short telomeres in lung transplantation: Known unknowns. *J Heart Lung Transplant*. 2022 May;41(5):664-666. doi: 10.1016/j.healun.2022.02.001.

Nordness MJ, Baxter BT, Matsumura J, Terrin M, Zhang K, Ye F, **Webb NR**, Dalman RL, Curci JA. The effect of diabetes on abdominal aortic aneurysm growth over 2 years. *J Vasc Surg*. 2022 Apr;75(4):1211-1222.e1. doi: 10.1016/j.jvs.2021.10.019.

Ojha V, Khaliq OK, Khurana R, Lorenzatti D, **Leung SW**, Lawton B, Slesnick TC, *et al*. Highlights of the Virtual Society for Cardiovascular Magnetic Resonance 2022 Scientific Conference: CMR: improving cardiovascular care around the world. *J Cardiovasc Magn Reson*. 2022 Jun 20;24(1):38. doi: 10.1186/s12968-022-00870-4.

Okekunle A, Asowata O, Akpa OM, Ovbiagele B, Fakunle AG, Komolafe

PUBLICATIONS CONTINUED

M, Arulogun O, et al. (**Arnett D**). Dietary patterns associated with Stroke among West Africans: a case-control study. *Int J Stroke*. 2022 Apr 4;17474930221094933. doi: 10.1177/17474930221094933.

Patel SR, Costello JM, Andrei AC, **Backer CL**, Krawczeski CD, Deal BJ, Langman CB, Marino BS. Incidence, Predictors, and Impact of Postoperative Acute Kidney Injury Following Fontan Conversion Surgery in Young Adult Fontan Survivors. *Semin Thorac Cardiovasc Surg*. 2022 Summer;34(2):631-639. doi: 10.1053/j.semtevs.2021.02.027.

Rahimi M, Adlouni M, Ahmed AI, **Alnabelsi T**, Chinnadurai P, Al-Mallah MH. Diagnostic accuracy of FDG PET for the identification of Vascular Graft Infection. *Ann Vasc Surg*. 2022 Jun 24;S0890-5096(22)00301-6. doi: 10.1016/j.avsg.2022.05.029.

Rashid Kazi R, Jung M, Kelly T, Xiong Y, **Harris A**. Frequency and timing of emergency department visits and hospital admissions in stented patients following common stone procedures. *Urolithiasis*. 2022 Jun;50(3):381-387. doi: 10.1007/s00240-022-01313-6.

Sawada H, **Lu HS**, **Daugherty A**. Annexin A1: a promising target for preventing aortic dissections. *Cardiovasc Res*. 2022 May 6;118(6):1383-1384. doi: 10.1093/cvr/cvac038.

Schroder EA, **Delisle BP**. Time Restricted Feeding to the Light Cycle Dissociates Canonical Circadian Clocks and Physiological Rhythms in Heart Rate. *Front Pharmacol*. 2022 May 12;13:910195. doi: 10.3389/fphar.2022.910195.

Séguin O, Mai LT, Acevedo Ospina H, Guay-Vincent MM, **Whiteheart SW**, Stäger S, Descoteaux A. VAMP3 and VAMP8 Regulate the Development and Functionality of Parasitophorous Vacuoles Housing Leishmania amazonensis. *Infect Immun*. 2022 Mar 17;90(3):e0018321. doi: 10.1128/IAI.00183-21.

Sharifi H, Mann CK, Noor AZ, Nikou A, Ferguson CR, Liu ZQ, Rockward AL, Moonschi F, **Campbell KS**, **Leung SW**, **Wenk JF**. Reproducibility of Systolic Strain in Mice Using Cardiac Magnetic Resonance Feature Tracking of Black-Blood Cine Images. *Cardiovasc Eng Technol*. 2022 Apr 8. doi: 10.1007/s13239-022-00621-7.

Sheppard MB, Braverman AC. Sports Participation and Physical Activity in Individuals with Heritable Thoracic Aortic Disease and Aortopathy Conditions. *Clin Sports Med*. 2022 Jul;41(3):511-527. doi: 10.1016/j.csm.2022.02.009.

Shridas P, Ji A, **Trumbauer AC**, Noffsinger VP, **Leung SW**, **Dugan AJ**, Thatcher SE, **Cassis LA**, **de Beer FC**, **Webb NR**, **Tannock LR**. Adipocyte-Derived Serum Amyloid A Promotes Angiotensin II-Induced Abdominal Aortic Aneurysms in

Obese C57BL/6J Mice. *Arterioscler Thromb Vasc Biol*. 2022 May;42(5):632-643. doi: 10.1161/ATVBAHA.121.317225.

Shimfessel TT, El-Dalati SA, **Seke-la M**, Ahmed T. Paradoxical embolisation in right-sided infective endocarditis and patent foramen ovale. *BMJ Case Rep*. 2022 May 27;15(5):e250272. doi: 10.1136/bcr-2022-250272.

Sim MMS, Banerjee M, Myint T, Garvy BA, **Whiteheart SW**, **Wood JP**. Total Plasma Protein S is a prothrombotic marker in People Living with HIV. *J Acquir Immune Defic Syndr*. 2022 Apr 4. doi: 10.1097/QAI.0000000000002994.

Smyth SS, Collier BS, Jackson RD, Kern PA, McIntosh S, Meagher EA, Rubio DM, et al. (**McMullen CA**). KL2 scholars' perceptions of factors contributing to sustained translational science career success. *J Clin Transl Sci*. 2021 Dec 28;6(1):e34. doi: 10.1017/cts.2021.886.

Sorrell VL. #EchoFirst Wins Gold, Silver, and Bronze. *CASE (Phila)*. 2022 Apr 18;6(2):49. doi: 10.1016/j.case.2022.03.001.

Sorrell VL. What Does AI Mean to You? *CASE (Phila)*. 2022 May 16;6(3):89-90. doi: 10.1016/j.case.2022.03.006.

Stainback R, **Sorrell VL**. CASE Goes Monthly - Update 2022. *J Am Soc Echocardiogr*. 2022 Apr;35(4):A11-A12. doi: 10.1016/j.echo.2022.02.005.

PUBLICATIONS CONTINUED

Stephens EH, **Backer CL**. Teaching the Modified Single-Patch Technique for Complete Atrio-ventricular Septal Defect. *World J Pediatr Congenit Heart Surg*. 2022 May;13(3):371-375. doi: 10.1177/21501351221081257.

Swietach P, **Despa S**. Channelling protons out of the heart. *J Physiol*. 2022 May 1. doi: 10.1113/JP283250.

Trinkle CA, Broadus RN, Sturgill JL, **Waters CM**, Morris PE. Simple, accurate calculation of mechanical power in pressure controlled ventilation (PCV). *Intensive Care Med Exp*. 2022 May 30;10(1):22. doi: 10.1186/s40635-022-00448-5.

Valencia SS, Dong BE, Gordon EM, Sun RC, **Waters CM**. ASK1 Regulates Bleomycin-induced Pulmonary Fibrosis. *Am J Respir Cell Mol Biol*. 2022 May;66(5):484-496. doi: 10.1165/rcmb.2021-0465OC.

Wang Z, Choi SW, Chami N, Borerwinkle E, Fornage M, Redline S, Bis JC, et al. (**Arnett DK**). The Value of Rare Genetic Variation in the Prediction of Common Obesity in European Ancestry Populations. *Front Endocrinol (Lausanne)*. 2022 May 3;13:863893. doi: 10.3389/fendo.2022.863893.

Wu JR, Song EK, **Moser DK**, **Lennie TA**. Dietary Antioxidant Insufficiency Is Associated With Increased Inflammatory Markers and Poorer Health-Related Quality of Life in Patients With Heart Failure. *J Cardiovasc Nurs*. 2022 Apr 8.

doi: 10.1097/JCN.0000000000000912.

Ye D, Wu C, Chen H, Liang CL, Howatt DA, Franklin MK, Moorleghe JJ, **Tyagi SC**, Uijl E, Danser AHJ, Sawada H, **Daugherty A**, **Lu HS**. Fludrocortisone Induces Aortic Pathologies in Mice. *Biomolecules*. 2022 Jun 13;12(6):825. doi: 10.3390/biom12060825.

Zhang Y, Wu C, Li L, Pandeya A, Zhang G, Cui J, Kirchhofer D, et al. (**Wood JP**). Extracellular Histones Trigger Disseminated Intravascular Coagulation by Lytic Cell Death. *Int J Mol Sci*. 2022 Jun 18;23(12):6800. doi: 10.3390/ijms23126800.

Zhu Z, Quadri Z, Crivelli SM, Elsherbini A, Zhang L, Tripathi P, Qin H, et al. (**Nikolova-Karakashian M**). Neutral Sphingomyelinase 2 Mediates Oxidative Stress Effects on Astrocyte Senescence and Synaptic Plasticity Transcripts. *Mol Neurobiol*. 2022 May;59(5):3233-3253. doi: 10.1007/s12035-022-02747-0.

UPCOMING 2022 EVENTS

KY ACC- Sept 10

Flowers Lecture- Sept 16

CV Seminar Series- Sept 29

Golf classic –Oct TBA

CV Seminar Series- Oct 27

CVRC research day-Oct 28

AHA Scientific Sessions Nov 5–7

Gill Affiliate meeting- Nov 9

CV Seminar Series- Dec 1

Cardio-oncology-Dec 3 and 4

