



## ADVANCE YOUR KNOWLEDGE IN CLINICAL AND TRANSLATIONAL SCIENCE

The UK College of Medicine Department of Behavioral Science offers integrated clinical and translational research training at three levels of education: the Certificate in Clinical and Translational Science (CTS), Master of Science in Medical Sciences (CTS Pathway), and PhD in CTS.

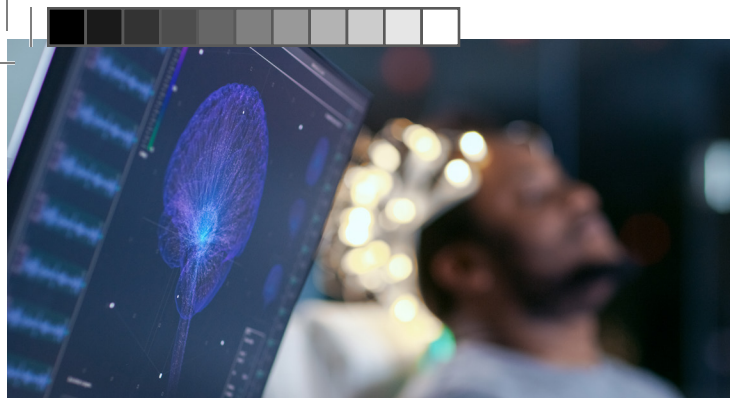
Our program's curriculum is tailored to the individual career trajectories of professionals who have already completed, or are currently completing, professional training in the health sciences. Our program trains current and aspiring investigators to excel in funded, team-based clinical and translational science research.

For more information, please contact  
Claire D. Clark, director of graduate studies  
[claire.clark@uky.edu](mailto:claire.clark@uky.edu) | 859.257.3513

## GRADUATE OPPORTUNITIES IN THE DEPARTMENT OF BEHAVIORAL SCIENCE







## CERTIFICATE IN CTS

The Certificate in Clinical and Translational Science (CTS) is the entry point for scholars interested in CTS research, regardless of academic training or interest. The key elements of this certificate are a curriculum focused on core CTS research competencies, mentored research training, and scheduling flexibility to support diverse constituencies. Up to nine credit hours from the certificate program can be applied to the Master of Science in Medical Sciences (CTS Pathway) or PhD in CTS.

### Eligibility requirements:

- Enrollment in a UK graduate program or terminal degree in a health profession (e.g. MD, DMD, DDS, PharmD, DVM, DO, DNP, PA)
- Applications must be formally admitted by the admissions committee of the department of behavioral science
- Full-time UK employees may use the Employee Education Program to cover tuition costs

### Curriculum:

- 14 credit hours
- Research practicum



## MASTER OF SCIENCE IN MEDICAL SCIENCES

The Master of Science in Medical Sciences (CTS Pathway) offers opportunities for those with a rigorous medical sciences background or those seeking a combined degree. The program provides mentored research training with a flexible curriculum for professional scholars interested in designing, implementing, and publishing their own research studies or contributing to clinical and translational science teams.

### Eligibility requirements:

- MS or PhD in basic medical sciences, MD, DMD, DDS, PharmD, DVM, DO, DNP, PA, PT or seeking a combined degree
- Applications must be formally admitted by the admissions committee of the department of behavioral science
- Full-time UK employees may use the Employee Education Program to cover tuition costs

### Curriculum:

- 30 credit hours
  - Thesis option: 24 hours of graduate-level coursework (i.e., 14 credit hours of core curriculum and 10 credit hours of tailored curriculum) plus at least six hours of research
  - Non-thesis option: 30 hours of graduate-level coursework (i.e., 14 credit hours of core curriculum and 16 credit hours of tailored curriculum) and preparation of a research paper
- For both: 50 percent of the coursework must be at the 600 level or above, and two-thirds of the coursework must be in formally organized courses

## PhD IN CTS

The PhD in CTS is an interdisciplinary program designed for professional scholars committed to leading interdisciplinary CTS research teams and/or sustaining independent research programs that promote innovation and discovery. PhD candidates receive expanded training in grant writing, grant management, team leadership, and personnel and laboratory management.

Like the Master of Science in Medical Sciences program, the PhD program in CTS emphasizes mentored research training with a primary mentor and a PhD advisory committee. The mentor and the advisory committee coordinate the scholar's curriculum, research training, and career development.

### Eligibility requirements:

- Limited to applicants with terminal professional degrees (i.e., MD, DMD, DDS, PharmD, DVM, DO, DNP, DSc or PhD) who hold appropriate domestic licensure to practice professionally and to students in professional health colleges that have combined degree programs
- Applications must be formally admitted by the admissions committee of the department of behavioral science
- Full-time UK employees may use the Employee Education Program to cover tuition costs

### Curriculum:

- 13-credit curriculum to establish core competencies in CTS
- Interdisciplinary courses designed to meet research interests and career trajectories