



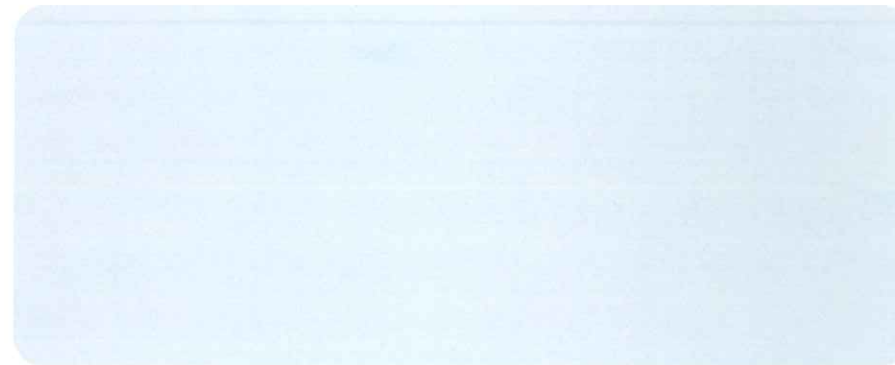
## What are the benefits and risks related to this study?

- Your loved one may or may not receive direct medical benefit from participating in this study
- The results of the study may benefit research for mild Alzheimer's disease
- Your loved one might experience one or more side effects during this study
- Prior to participation, the study staff will review all known study-related risks and side effects with you and your loved one
- During participation, your loved one will be closely monitored for any side effects and changes in their health

## What is a research study?

- All investigational drugs must be tested in research studies before they can be approved and prescribed to patients
- The purpose of a research study is to gather information about an investigational drug and learn whether it works and is safe
- To gather this information, study doctors need volunteers to participate in research studies
- By participating in the ABROAD study, your loved one could potentially help increase our understanding of the treatment options for Alzheimer's symptoms

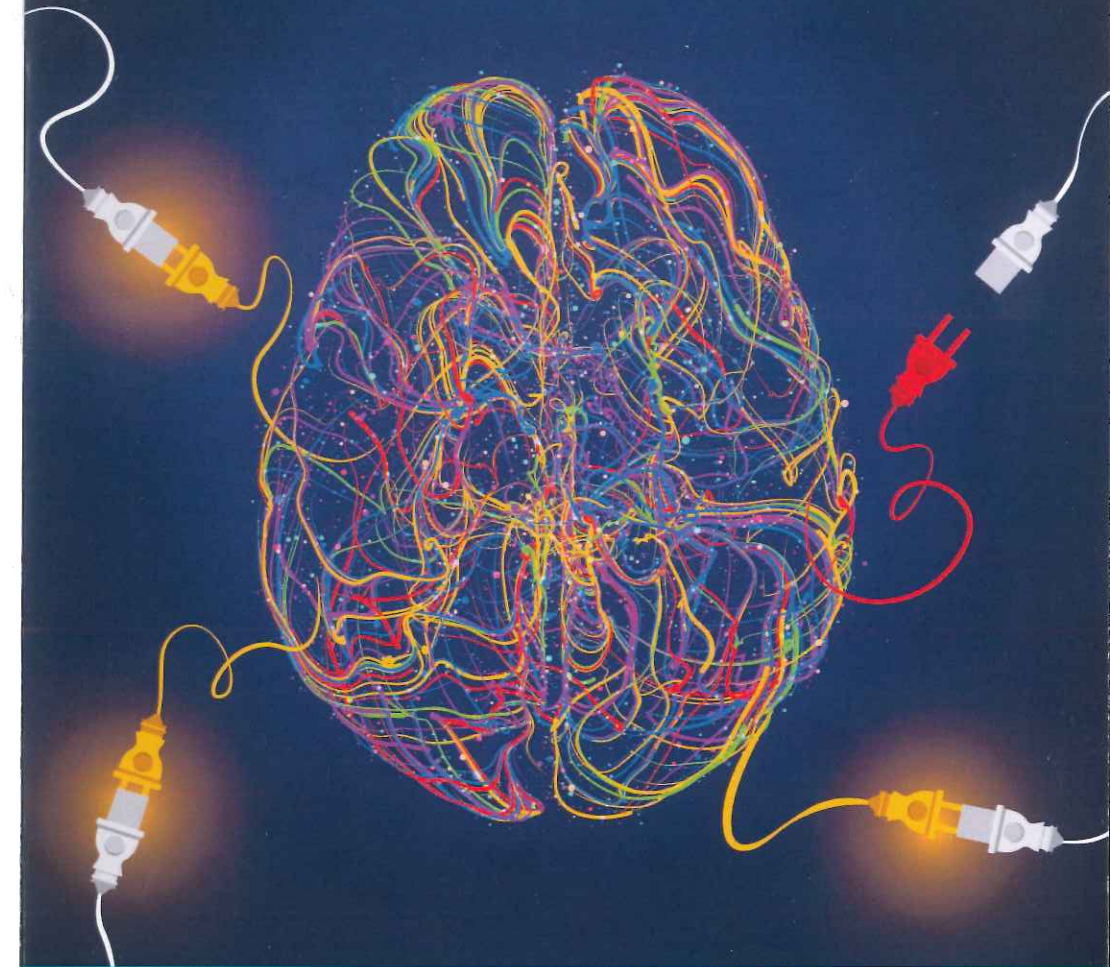
## For more information, please contact:



**ABROAD** 

9Jan2023\_M23-515\_Caregiver Brochure\_V1\_English

With mild **Alzheimer's**, the mind isn't fully connected to memory, thoughts, and behavior.



Learn about the **ABROAD** research study of an investigational drug for adults who have been diagnosed with mild Alzheimer's disease or are experiencing signs and symptoms of Alzheimer's.



## Is a loved one experiencing signs and symptoms of Alzheimer's?

Mild Alzheimer's causes slight but noticeable problems with a person's memory, ability to think, and behavior. Signs and symptoms may include:

- Trouble retaining new information
- Frequently misplacing objects
- Forgetting to pay bills
- Difficulty paying attention
- Forgetting appointments

Over time, these symptoms may get worse or occur more often and affect their daily function.

If your loved one has been diagnosed with mild Alzheimer's or has been experiencing signs and symptoms of Alzheimer's, you may be eligible for the **ABROAD** research study.

## What is the **ABROAD** study?

- It is a research study for people who have been diagnosed with mild Alzheimer's OR have been experiencing signs and symptoms of Alzheimer's
- Study doctors want to learn if an investigational drug for the symptoms of mild Alzheimer's works and is safe
- The investigational drug is not approved for use in adults with mild Alzheimer's, and it is only available in research studies like this one

## Who is eligible to participate in this study?

To pre-qualify for this study, your loved one must:

- Be 50 to 90 years of age
- Have been diagnosed with mild Alzheimer's OR have been experiencing signs and symptoms of Alzheimer's
- Have a study partner who spends an average of 10 hours per week with them

Additional criteria will apply. All study-related medical care, visits, tests, and study drug will be provided at no cost. Study participants may also be compensated for their time and travel.

## What will happen during this study?

- As a study partner, you will be asked to:
  - Come to study clinic visits with your loved one and be available for phone calls with the study doctor/staff
  - Answer questions about your loved one's health and behavior, as well as any side effects they may be experiencing
  - Complete questionnaires about your loved one throughout the study
- If your loved one is eligible for this study and agrees to participate, they will be randomly assigned (by chance) to receive the investigational drug or placebo
  - A placebo looks like the investigational drug but does not contain any active medication
  - There is a 75% chance (3 in 4) of receiving the investigational drug and 25% chance (1 in 4) of receiving placebo
  - You, your loved one, and the study doctor/staff will not know whether your loved one is receiving the investigational drug or placebo
  - Your loved one will take their assigned study drug by mouth once a day for 12 weeks
- Your loved one's total participation in this study will last approximately 20 weeks, which includes:
  - 8 study clinic visits for tests and assessments
  - 4 phone visits with the study doctor/staff