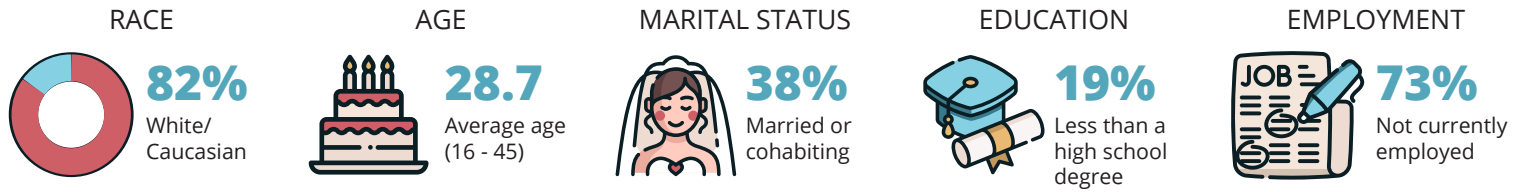


The Women of the KY-Moms MATR Program

A Snapshot of Respondents at Baseline

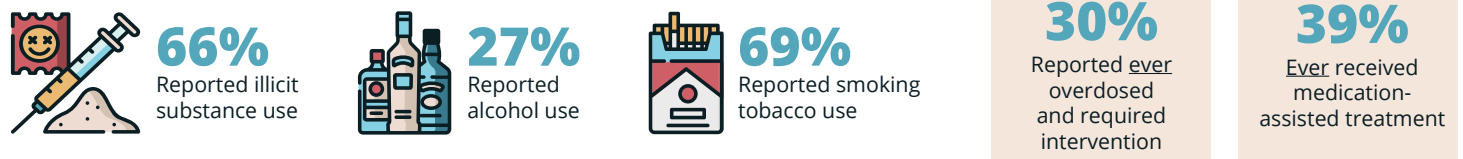
The KY-Moms MATR case management program is administered by the Division of Substance Use Disorder in the Department for Behavioral Health, Developmental and Intellectual Disabilities; KY-Moms MATR (502) 782-6192

This fact sheet summarizes characteristics reported by 120 women in the KY-Moms MATR program who completed an updated baseline assessment between July 2024 and June 2025.

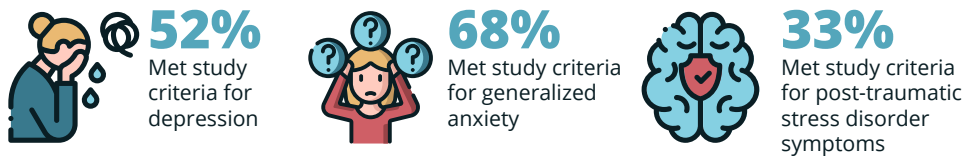


Risk Factors at Baseline

SUBSTANCE USE 6 MONTHS BEFORE PROGRAM ENTRY



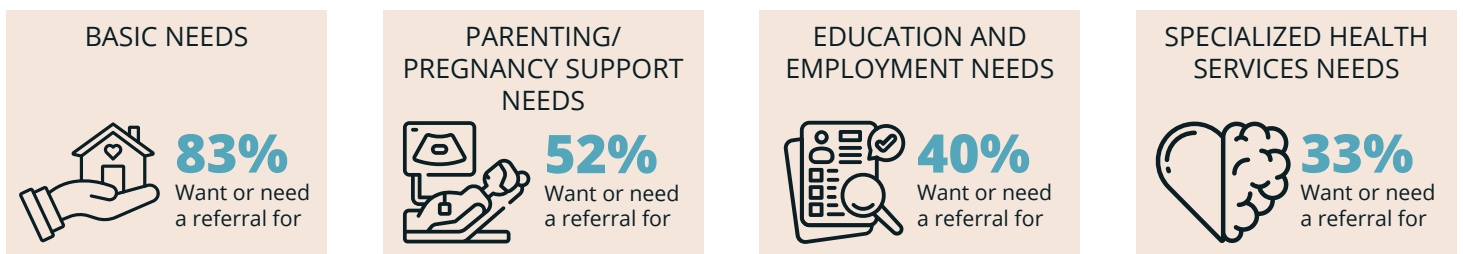
MENTAL HEALTH 6 MONTHS BEFORE PROGRAM ENTRY



INTIMATE VIOLENCE 6 MONTHS BEFORE PROGRAM ENTRY¹

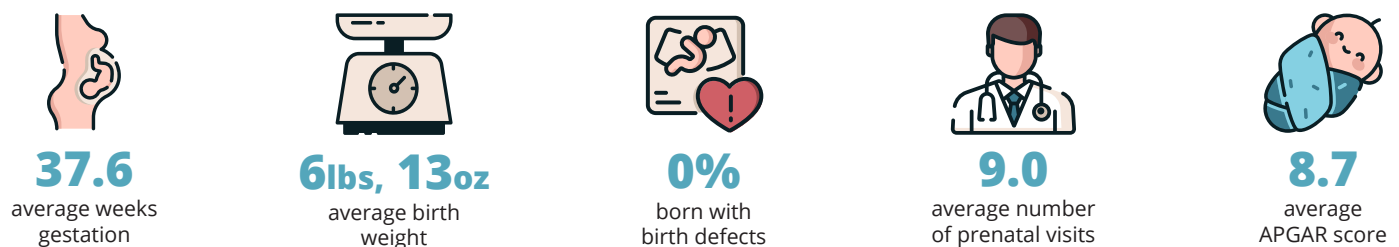


KY-Moms MATR Service Needs



KY-Moms MATR Birth Event Outcomes

The Kentucky Vital Statistics birth event data set was used to examine birth outcomes for 101 babies² born to KY-Moms MATR respondents who completed the baseline assessment and gave birth between April 2024 and September 2025.



¹ Experienced violence perpetrated by a current partner, ex-partner, or family member.

² To be included in the analysis for the birth event outcome section of this report, respondents had to have given permission for the research team to access and to have had matching information from the Kentucky Vital Statistics birth event data set. Out of the 120 respondents who completed a baseline, 98 respondents (81.7%) gave permission to access their data and 95 were matched to the birth event data set. Six of the mothers who entered KY-Moms MATR after the birth of their baby had more than one child in the dataset. As a result, the sample for mother characteristics is 95 and infant characteristics is 101.