

BACKGROUND

- Papilledema is the term used to describe optic disc swelling secondary to elevated intracranial pressure (ICP)
- Many providers use papilledema interchangeably with disc swelling for alternate etiologies that are not associated with elevated ICP
- The aim of this study is to assess the knowledge gap across various specialties and evaluate if there is delay in diagnosis due to incorrect labelling.

METHODS

- A retrospective chart review of 368 (287 female, 81 male) eligible patient charts over 18 years of age that had a diagnosis of “unspecified papilledema” (ICD-10 H47. 10) using EPIC Slicer Dicer between June 2021 and September 2023 was performed at University of Kentucky.
- Elevated ICP was confirmed using computerized tomography (CT), magnetic resonance imaging (MRI), and lumbar puncture (LP).

RESULTS

- Out of 368 adult patients 42 patients never had any confirmatory tests for elevated ICP for various reasons and were excluded.
- 151 (46.3%) out of remaining 326 patients labelled as papilledema did not have elevated ICP.

RESULTS CONTD.

- We also analyzed data on inaccurate labelling of optic neuropathy as papilledema during the first encounter by various specialties which is as follows:
 - Emergency physicians 27 (17.88%)
 - Neurology 22 (15.89%)
 - Ophthalmology 21 (13.91%)
 - Other referring providers including primary care 81 (53.65%)
- Although Ophthalmologists have mislabeled fewer patients, the delay in diagnosis of such patients is much longer than other specialties.**

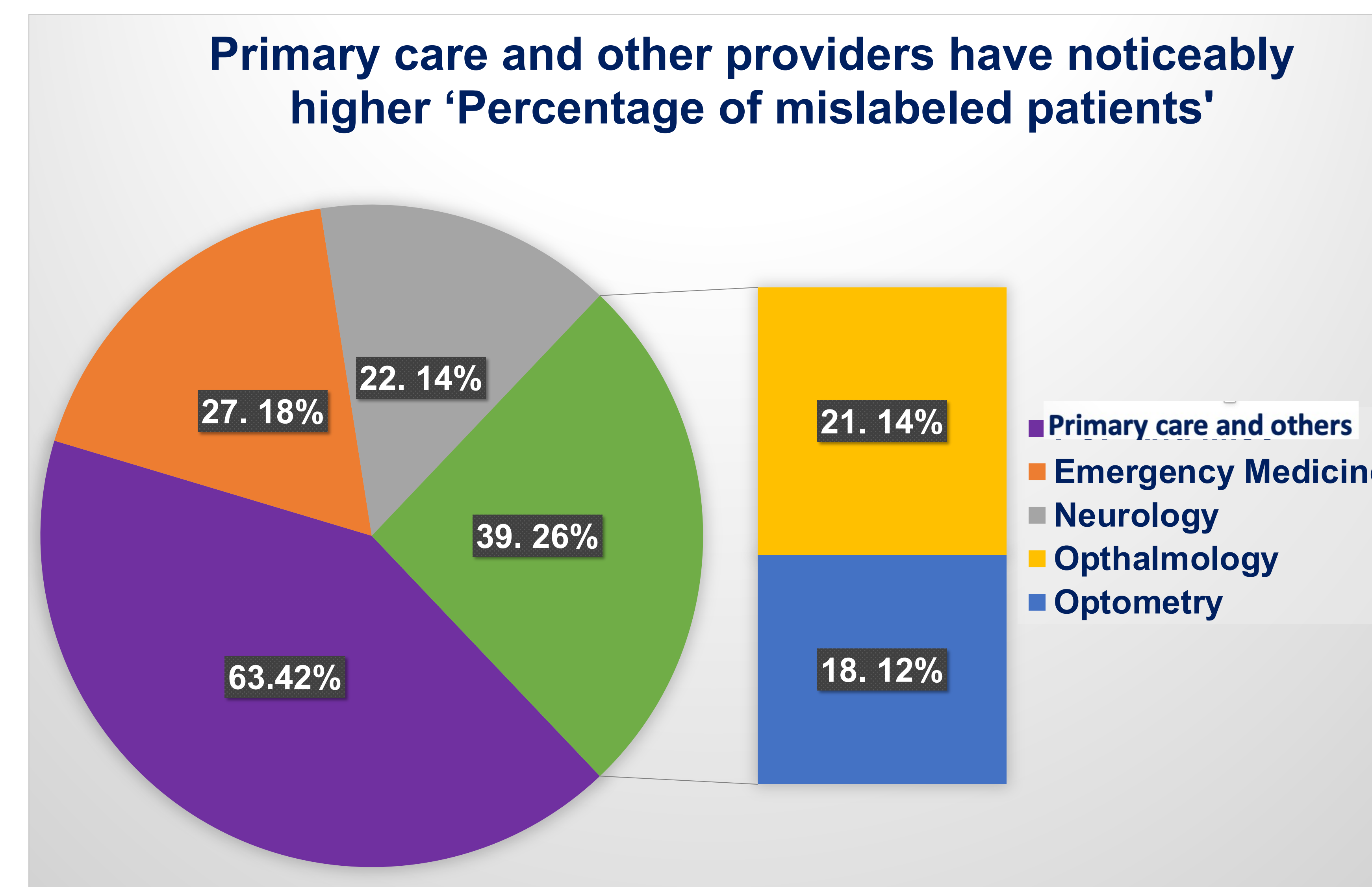
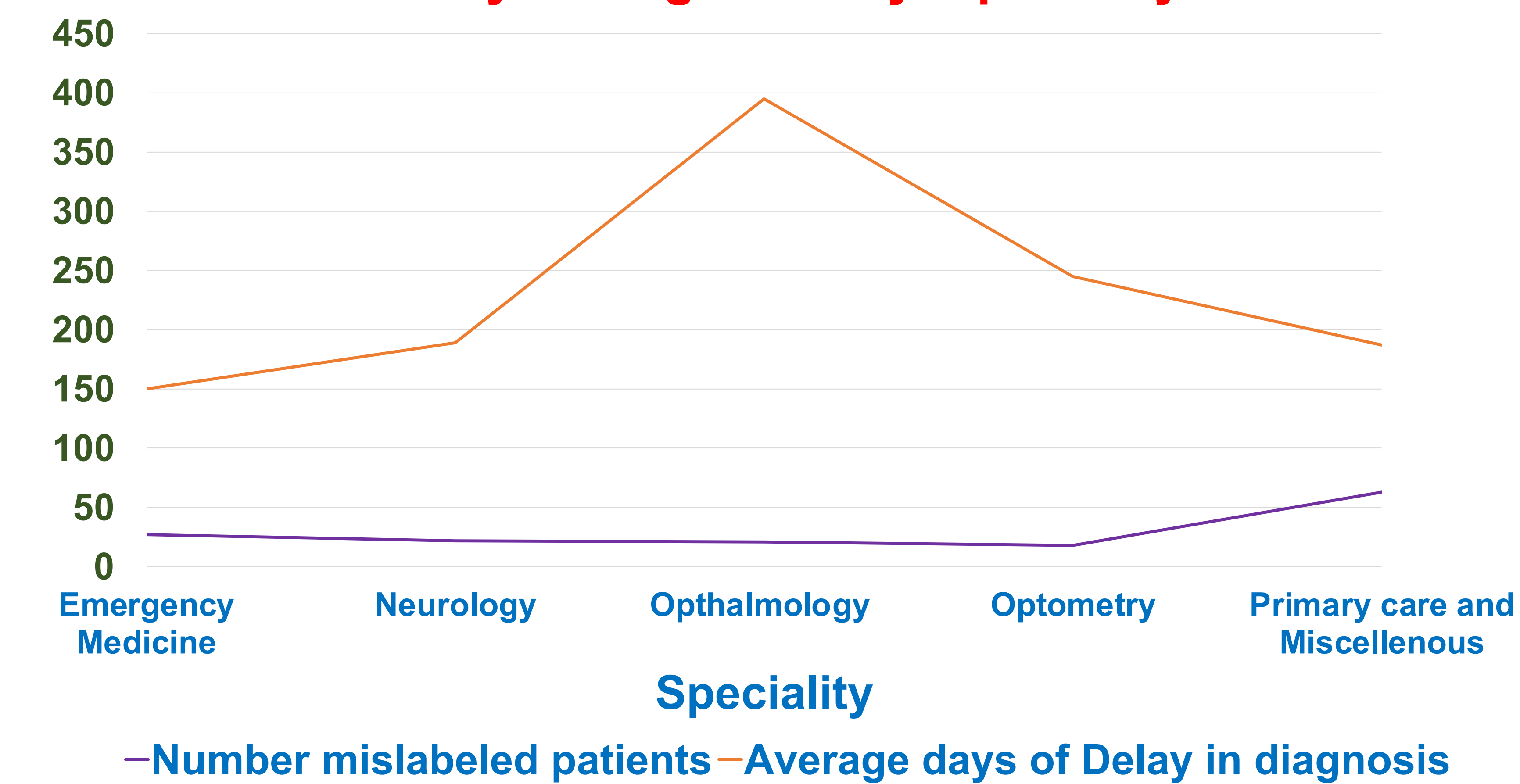


Fig 1: Percentage of mislabeled patients by specialty

RESULTS CONTD.

'Number mislabeled patients', 'Average days of Delay in diagnosis' by 'Specialty'



CONCLUSIONS

- Our results suggest that inaccurate labelling of optic disc edema as papilledema prevails among various specialties including ophthalmology and this results in further delay in accurate diagnosis of the patients.**
- There is a potential knowledge gap that must be addressed to prevent unnecessary testing, system wide costs, and erroneous diagnosis that leads to distress among patients.

REFERENCES

- Minckler D, Lin K. Papilledema: An Inaccurate Term in Our Medical Vocabulary. Ophthalmology. 2023; 130(2):137–8. Available from: <https://doi.org/10.1016/j.ophtha.2022.12.009>
- Dhoot R, Margolin E. Papilledema. [Updated 2023 Aug 8]. In: StatPearls. Treasure Island (FL): StatPearls Publishing. Available from: <https://www.ncbi.nlm.nih.gov/books/NBK53829/5/>