



# *The Newspaper*

**University of Kentucky  
Department of Neurology  
December 2023**

## **Table of Contents**

1. Table of Contents
2. [Publications/Faculty Achievements](#)
3. [Faculty Kudos/Resident Kudos/Staff Kudos](#)
4. [Trainee of the Month/Conference at UK](#)
5. [Conference at UK Cont./Welcome](#)
6. [Philanthropy](#)
7. [Wellness and Support Resources](#)
8. [Events](#)
9. [Events Cont.](#)
10. [Save the Dates](#)

## Publications



Nakul Katyal, MD, wrote an article published in the *American Association of Neuromuscular & Electrodiagnostic Medicine*. Dr. Katyal shared his experience participating in an AANEM Committee and the benefits his volunteering brings to his practice. [Click here](#) to read the article entitled, "Trainee Talk: The benefits of serving on an AANEM committee."

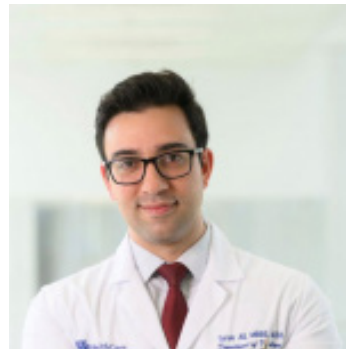


Avasarala J. Das S. Inclusion of race-neutral data as fundamental to preventing misguided AI modeling. *Comput Biol Med*. 2024;168:107859. Epub ahead of print.

## Faculty Achievements



Zain Guduru, MD, will serve as president of the Commonwealth Neurological Society beginning in January.



Tarek Ali, MBBS, M.Ed, received the 2024 AAN A.B. Baker Teacher Recognition Award.



Sharoon Qaiser, MD, was invited to join the Child Neurology Society International Affairs Committee.

## Faculty Kudos



Jagannadha Avasarala, MD, PhD, received a very nice compliment from a patient who wrote, "I wanted to thank you again for treating me with respect and understanding today during my appointment. You were very clear about everything, and you truly listened to me and about my problems, and didn't brush them off as just being part of having MS. I have never left an appointment in a good mood or felt like I had a productive visit and I felt both today for the first time in 10 years! It was nice meeting you, and I very much look forward to working with you."

## Resident Kudos



Rani Priyanka Vasireddy, MBBS, PGY 4, was featured in *UKNow* in an article entitled, "Police sergeant making full use of the life' he got back thanks to UK HealthCare." [Click here](#) to read the story.

## Staff Kudos



Mia Cloyd, Medical Assistant, KY Neuroscience Institute, was featured in a story in *Neurology Today*! [Click here](#) to read the story.



## Trainee of the Month - December



**Yasodara Priyadharsini Senthamarai Siddharthan, MBBS, PGY 4**

**Care Coordination:** "I worked with Dr. Siddharthan on our Stroke Service. During that time, Dr. Siddharthan managed the team well by coordinating with several first-year neurology residents, a fourth-year acting intern, and the discharge planning team. Dr. Siddharthan adeptly oversaw the care of a wide range of medically complex pathologies. Dr. Siddharthan was organized every day on rounds and helped the team develop strong plans for patients. Dr. Siddharthan demonstrated a logical thought process when presenting plans and helped catch a non-occlusive thrombus on a patient that otherwise may

have been missed. As always, Dr. Siddharthan was an invaluable member of the team and I thoroughly enjoyed working with her."

**Leadership:** "As Academic Chief Resident, Dr. Siddharthan has put significant effort into scheduling didactics for this academic year. There are many moving pieces as part of this scheduling and she is always on top of things and makes sure every hour of didactic is efficiently utilized to the benefit of all residents."

**Teamwork:** "She is very much a team player and cares about her patients. She knows the details and is very efficient. We had a very complicated week and it was great that we had her as part of the team. She is a great resident."

## Conference at UK

### Student National Medical Association & Regional Medical Education Conference



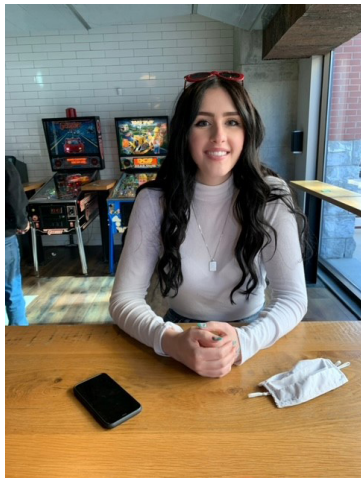
The University of Kentucky College of Medicine chapter of Student National Medical Association (SNMA) hosted the annual Region X Regional Medical Education Conference (RMEC) from December 8 to 10, 2023. The chapter welcomed about 150 K-12, pre-med and medical students, as well as residents and faculty from Kentucky and Tennessee. The chapter's faculty advisor is Dr. Ima Ebong. Department of Neurology faculty and residents gave talks and hosted hands-on workshops for attendees. The Neuroscience Research Priority Area was an exhibitor.

SNMA is committed to supporting current and future underrepresented minority medical students, addressing the needs of underserved communities, and increasing the number of clinically excellent, culturally competent and socially conscious physicians. Please see pictures from the event on the next page.

## Conference at UK Cont. Student National Medical Association & Regional Medical Education Conference



## Welcome



Hi, I'm Rachel Stevenson. I was recently promoted from a Patient Service Coordinator at KNI to an Administrative Assistant in the business office. Prior to working at UK, I was a medical scribe for a high-volume OB-GYN for 2 years. I completed my undergraduate studies at UK, earning a Bachelor of Science in Biology and a Bachelor of Arts in Environmental Sustainability Studies. In my new position, I will be collaborating with Paige Sawyer to oversee faculty affairs within the Neurology & Neurosurgery Departments. I derive great satisfaction from collaborating with healthcare professionals and seeing firsthand the beneficial outcomes of implementing solutions that streamline their responsibilities. In my personal life, I have a self-awarded "PhD" in food appreciation. I am always on the lookout for hidden culinary gems. I am also a thrifting enthusiast and estate sale explorer. My home is a curated collection of eclectic finds that each have unique origin story. I share my home in Lexington with my partner, cat, and dog.



# Philanthropy

## Robert J. Baumann, MD Resident Endowment Fund

The endowment was established in honor of Dr. Baumann’s skills as a clinician and educator. It provides much needed funding for resident learning opportunities and research-related needs that are not otherwise supported.



Education is one of the core missions of our department - we are always looking for ways to improve the curriculum and educational opportunities we provide. Our goal is to continue to attract the highest caliber trainees to our programs, provide comprehensive neurological education, and increase the number of neurologists available in the commonwealth capable of providing cutting edge patient care and who are dedicated to life-long learning. In 2015, the Robert J. Baumann, MD Fund for Neurology Residents was established to help us support our goals for the neurology resident program. Dr. Baumann has been a familiar face among neurology residents at the University of

Kentucky for five decades. Dr. Baumann truly embodies the teaching mission of our department. His devotion to the field of medicine and training the next generation of providers is truly second to none.

In keeping with Dr. Baumann’s passion for providing a strong medical education, the endowment will bolster the continued expansion of the Residency Program and ensure that our trainees have a well-rounded experience, positioning us to be among the best,

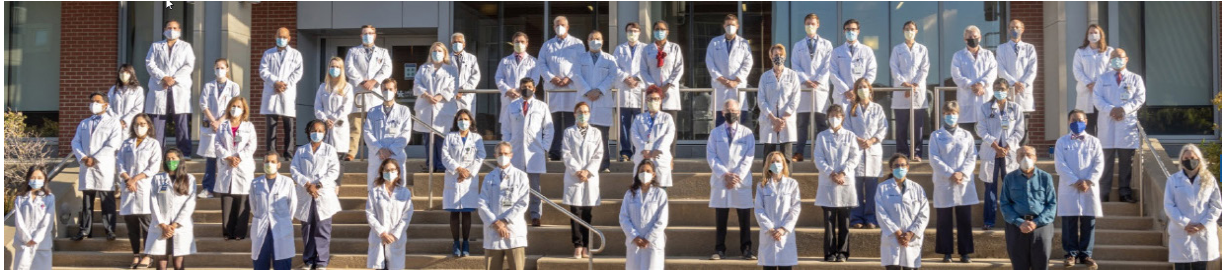


and most sought out programs in the United States. Please consider contributing to the continued growth of our program and making an impact on future neurology residents by making a gift to the Robert J. Baumann MD Fund for Neurology Residents. All donations will be acknowledged and are tax deductible.



Donations can be made by contacting Taryn Derrick at [taryn.derrick@uky.edu](mailto:taryn.derrick@uky.edu), for Neurology Alumni Philanthropy and Beth Wells at [beth.wells@uky.edu](mailto:beth.wells@uky.edu) for the Grateful Patient and Family Philanthropy.

# Wellness and Support Resources



[Click here to find more helpful information on our Department of Neurology website.](#)

## **UK Wellness Resources**

Academic Resources offer a wide variety of online and in-person tips, tools, and suggestions.

## **Workplace Safety**

UK HealthCare is committed to safety and well-being of patients, visitors, and staff in our enterprise. We take all forms of aggression, violence, and threats seriously. Sometimes frontline staff don't report these incidents, because they feel disruptive behavior is "part of the job". There is uncertainty about how and where to report.

## **Childcare**

Several childcare facilities are located on or adjacent to the UK campus. Please note that some of these programs have a 9-10 month waiting list, so if you are interested, please talk to the directors as early as possible.

## **Financial Health**

You and your family have access to live financial experts for guidance on financial questions, big or small.

## **Diversity and Inclusion**

As healthcare providers, we have an obligation to do no harm. But our obligations go further to prevent harm from befalling others because of our inaction or silence.

## **Spiritual**

Various resources are available for spiritual support through the GME program.

## **Abuse Response and Reporting**

For procedures to report abuse, and for details of patient rights, click the title.

## **The Vicarious Trauma Toolkit**

The *Vicarious Trauma Toolkit* (VTT) was developed on the premise that exposure to the traumatic experiences of other people—known as *vicarious trauma*—is an inevitable occupational challenge for the fields of victim services, emergency medical services, fire services, law enforcement, and other allied professionals; however, organizations can mitigate the potentially negative effects of trauma exposure by becoming vicarious trauma-informed.

## **Well-Being**

The University of Kentucky GME Wellness In Training Committee is devoted to helping GME learners achieve their highest potential through the integration of the physical, social, emotional, environmental and economic aspects of wellness.

## **Physician Support Line**

This is a peer-to-peer support line for physicians by physicians that is available to US based DO / MD / International equivalents at the attending, fellow, resident, intern, medical student, or research level. Any discussions are confidential and protected.

## **Lexington Medical Society Physician Wellness Program**

Services include individual counseling, couples/family sessions, and sessions with spouse/partners alone. These confidential and free counseling services are available to anyone.

## **UK Work-Life Counseling**

Free and confidential counseling for life stress, work performance, substance abuse concerns, and mental health.

## **UK REFER Program**

A Family Center Counseling service provided as a benefit to UK employees that focuses on personal, couple, and/or family concerns.

## **Emergent Psychiatry Services**

UK Department of Psychiatry Outpatient Clinic Access to confidential consultation is available through the UK Outpatient Clinic during business hours, five days per week. Call 859-323-6021 and follow the prompts for the Outpatient Clinic.

## **The Ridge Behavioral System**

Access to confidential consultation regarding the need for emergency psychiatric services is available to 24 hours per day, seven days a week. The house staff officer is to call 859-268-6400 and ask for the Assessment Office and identify oneself as a UK resident/fellow needing immediate evaluation.



## Events

### Myasthenia Gravis Education Day



### Neurology and Neurosurgery Holiday Party





## Events Cont.

## Neurology and Neurosurgery Holiday Party Cont.



## Save the Dates

# International Stroke Conference February 7, 2024 - February 9, 2024 Phoenix, Arizona

## Stroke Translational Research Advancement Workshop (STRAW)

April 24-25, 2024

Lexington, KY

This meeting regularly attracts researchers and clinicians interested in stroke across the Commonwealth and throughout the USA. **STRAW V: Understanding Stroke: Novel Insights into Prognostics and Treatments** will focus on a translational approach to stroke and related cerebrovascular diseases. Topics will include new insights into novel approaches to pharmacotherapies for cerebrovascular diseases, as presented and discussed by clinical and basic scientists.

As per tradition, the meeting will have no registration fee and will also include an optional excursion in the 'land of horses and bourbon', facilitating opportunities for networking with like-minded research scientists.

### Location

Embassy Suites by Hilton Lexington Green

Rachel Ward-Mitchell, RN, BSN, would like to invite you to the virtual epilepsy support group via Zoom. This meeting is the first Tuesday of the month from 6:30 pm to 8 pm. If you would like to join the meetings please contact Rachel at 859.218.5053 or through Central Kentucky Epilepsy Network <https://www.facebook.com/CentralKentuckyEpilepsySupportNetwork>.

Please submit contributions for the January  
Newspaper to Lee Anne Rudd, (lee.rudd@uky.edu).