

The background of the top section is a vibrant blue neural network. It features several large, multi-lobed cell bodies (soma) with numerous thin, branching processes (dendrites and axons) extending outwards. Interspersed among these structures are small, glowing orange and yellow dots, which likely represent synaptic connections or active nodes in the network. The overall effect is a complex, interconnected web of light blue and purple tones against a dark blue background.

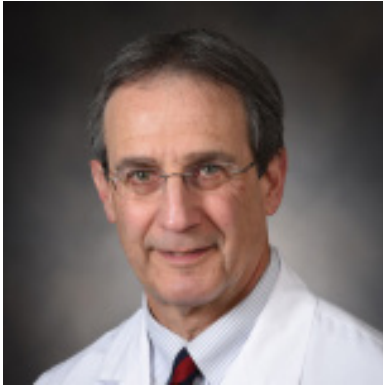
The Newspaper

**University of Kentucky
Department of Neurology
February 2023**

Table of Contents

1. Table of Contents
2. [Publications](#)
3. [Faculty Achievements](#)
4. [Faculty Achievements Cont.](#)
5. [Faculty Seen and Heard/Research News](#)
6. [Faculty & Resident Kudos/Resident Kudos/Staff Achievements](#)
7. [Events](#)
8. [Philanthropy](#)
9. [Wellness & Support](#)
10. [Save the Dates](#)

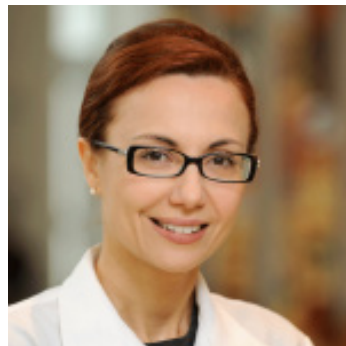
Publications



Sandset EC, Goldstein LB. Advances in stroke: treatments-preventive. *Stroke* 2023;54:868-869.

Chyou JY, Barkoudah E, Dukes JW, Goldstein LB, Joglar JA, Lee AM, Lubitz SA, Marill KA, Sneed KB, Streur MM, Wong GC, Gopinathannair R. Atrial Fibrillation occurring during acute hospitalization: A scientific statement from the American Heart Association. *Circulation*. 2023;147:00-00.

Boe NJ, Hald SM, Jensen MM, Bojsen JA, Elhakim MT, Florisson S, Saleh A, Clausen A, Moller S, Harbo FSG, Graumann O, Hallas J, Rodriguez LAG, Salman RA, Goldstein LB, Gaist D. Association between statin use and intracerebral hemorrhage location: A nested case-control registry study. *Neurology*. 2023;100:e1048-e1061.



Clay JL, Villamar MF, Bensalem-Owen MK. Pharmacist involvement with antiepileptic therapy for status epilepticus in the emergency department. *Am J Emerg Med*. 2023 Jan;63:156-157.

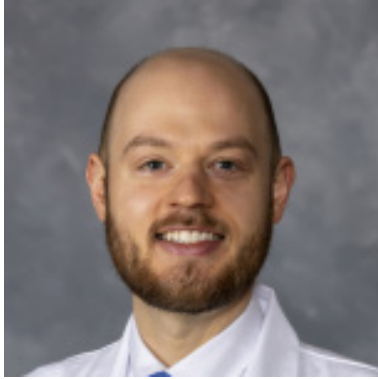


Thompson JS, Thornton AC, Ainger T, Garvy BA. Long-term high-dose immunoglobulin successfully treats Long COVID patients with pulmonary, neurologic, and cardiologic symptoms. *Front. Immunol*. 2023.

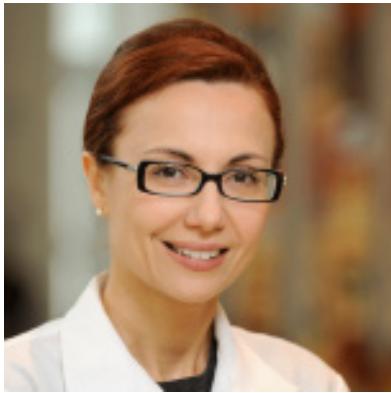


Kasarskis, EJ, Tandan R. Why is nutrition vital for advancing ALS care and clinical research? *Amyotrophic Lateral Scler Frontotemporal Degener*. 2023;21:1-3

Faculty Achievements

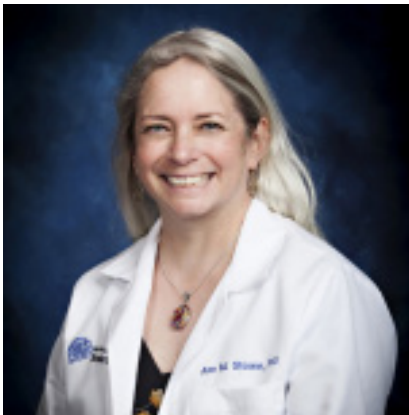


Jordan Clay, MD, was appointed co-chair elect of the American Clinical Neurophysiology Society Membership Committee.



Meriem Bensalem-Owen, MD, was appointed to serve on the American Clinical Neurophysiology Society Awards Committee.

Dr. Bensalem-Owen was appointed to the Robert and Jeanne Nyere Professorship in Epilepsy Research.



Ann Stowe, PhD, was elected to the university Faculty Sentate. Dr. Stowe's term will begin in August 2023.

Faculty Achievements Cont.



Sally Mathias, MD, received the AB Baker Teacher Recognition Award from the American Academy of Neurology, she was invited to be a part of the panel at this years AAN.

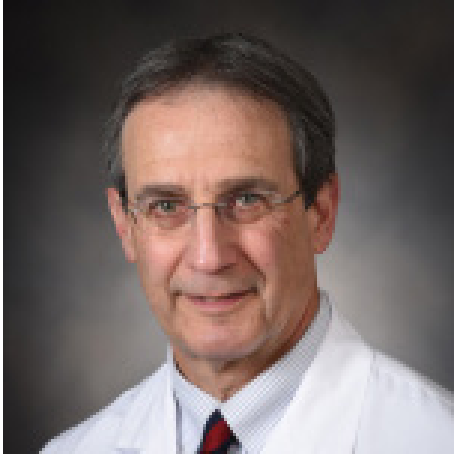


Zain Guduru, MD, was elected Fellow of the American Academy of Neurology.

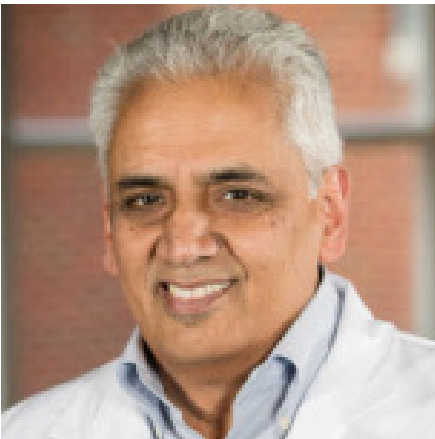


Dong "Dan" Han, PsyD, was appointed as a Review Editor of the Speech and Language Section for the journal, *Frontiers in Human Neuroscience*.

Faculty Seen and Heard



Larry Goldstein, MD, was interviewed at the International Stroke Conference, [click here](#) to watch as he reflects on his research and experiences at the ISC throughout the years.



Jay Avasarala, MD, PhD, was featured in UKNow. The story was entitled, "UK HealthCare neurologist working to improve access to MS treatments." [Click here](#) to read the full article.

Research News



Amanda Glueck, PhD, and Dan Han, PsyD, were awarded Traumatic Brain Injury research funds by the Association of the U.S. Army, CPL Bill McMillan Chapter and Lockheed Martin Corp. The funds are allocated for supplementing immersive virtual reality research for neurologic conditions.

Faculty & Resident Kudos



Tritia Yamasaki, MD, PhD, and Pinar Coskun, MD, PGY 4, received a very nice compliment from a patient and his wife. "I ran a doctor's office for twenty years, and today was the best experience we have ever had receiving medical care. Everyone from the check in staff, to the nurse, Doctor Tritia Yamasaki, Doctor Elif Coskun, all of them were so on point, and friendly. My husband had one of the best blood pressure readings we have seen in a long time and I think it is a result of the care we received. I can not say enough thank you's for our care."

Resident Kudos



Andrew Williams, DO, PGY 1, received a very nice compliment from a UK Gastroenterologists. He was very impressed with Dr. Williams, and wrote "He is very hardworking, bright and thorough with his patient interviews and examinations."

Staff Achievements



Heather Bailey, CCT, R.EEG T., MSHS, was appointed to the American Clinical Neurophysiology Society MOC/Exam Committee and to the Virtual Learning Committee. Heather is the first UKHC EEG technologist to be appointed to serve on ACNS Committee.

Events

International Stroke Conference



Kenneth Baker Birthday Celebration



Philanthropy

Robert J. Baumann, MD Resident Endowment Fund

The endowment was established in honor of Dr. Baumann's skills as a clinician and educator. It provides much needed funding for resident learning opportunities and research-related needs that are not otherwise supported.



Education is one of the core missions of our department - we are always looking for ways to improve the curriculum and educational opportunities we provide. Our goal is to continue to attract the highest caliber trainees to our programs, provide comprehensive neurological education, and increase the number of neurologists available in the commonwealth capable of providing cutting edge patient care and who are dedicated to life-long learning. In 2015, the Robert J. Baumann, MD Fund for Neurology Residents was established to help us support our goals for the neurology resident program. Dr. Baumann has been a familiar face among neurology residents at the University of Kentucky for four decades. Dr. Baumann truly embodies the

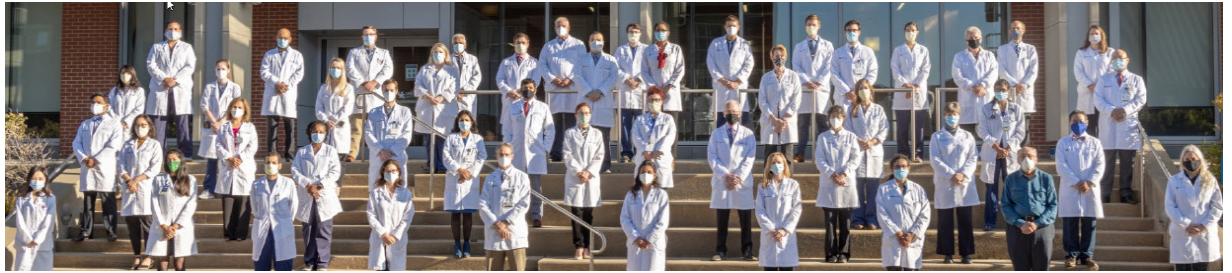
teaching mission of our department. His devotion to the field of medicine and training the next generation of providers is truly second to none.

In keeping with Dr. Baumann's passion for providing a strong medical education, the endowment will bolster the continued expansion of the Residency Program and ensure that our trainees have a well-rounded experience, positioning us to be among the best, and most sought out programs in the United States. Please consider contributing to the continued growth of our program and making an impact on future neurology residents by making a gift to the Robert J. Baumann MD Fund for Neurology Residents. All donations will be acknowledged and are tax deductible.



Donations can be made by contacting our Director of Philanthropy, Lisa Deaton Greer. (859-323-5374 or lisa.greer@uky.edu) or by clicking here <https://neurology.med.uky.edu/neurology-alumni>.

Wellness and Support Resources



[Click here](#) to find more helpful information on our Department of Neurology website.

UK Wellness Resources

Academic Resources offer a wide variety of online and in-person tips, tools, and suggestions.

Workplace Safety

UK HealthCare is committed to safety and well-being of patients, visitors, and staff in our enterprise. We take all forms of aggression, violence, and threats seriously. Sometimes frontline staff don't report these incidents, because they feel disruptive behavior is "part of the job". There is uncertainty about how and where to report.

Childcare

Several childcare facilities are located on or adjacent to the UK campus. Please note that some of these programs have a 9-10 month waiting list, so if you are interested, please talk to the directors as early as possible.

Financial Health

You and your family have access to live financial experts for guidance on financial questions, big or small.

Diversity and Inclusion

As healthcare providers, we have an obligation to do no harm. But our obligations go further to prevent harm from befalling others because of our inaction or silence.

Spiritual

Various resources are available for spiritual support through the GME program.

Abuse Response and Reporting

For procedures to report abuse, and for details of patient rights, click the title.

The Vicarious Trauma Toolkit

The *Vicarious Trauma Toolkit* (VTT) was developed on the premise that exposure to the traumatic experiences of other people—known as vicarious trauma—is an inevitable occupational challenge for the fields of victim services, emergency medical services, fire services, law enforcement, and other allied professionals; however, organizations can mitigate the potentially negative effects of trauma exposure by becoming vicarious trauma-informed.

Well-Being

The University of Kentucky GME Wellness In Training Committee is devoted to helping GME learners achieve their highest potential through the integration of the physical, social, emotional, environmental and economic aspects of wellness.

Physician Support Line

This is a peer-to-peer support line for physicians by physicians that is available to US based DO / MD / International equivalents at the attending, fellow, resident, intern, medical student, or research level. Any discussions are confidential and protected.

Lexington Medical Society Physician Wellness Program

Services include individual counseling, couples/family sessions, and sessions with spouse/partners alone. These confidential and free counseling services are available to anyone.

UK Work-Life Counseling

Free and confidential counseling for life stress, work performance, substance abuse concerns, and mental health.

UK REFER Program

A Family Center Counseling service provided as a benefit to UK employees that focuses on personal, couple, and/or family concerns.

Emergent Psychiatry Services

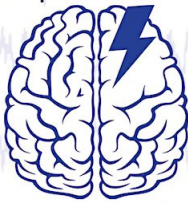
UK Department of Psychiatry Outpatient Clinic Access to confidential consultation is available through the UK Outpatient Clinic during business hours, five days per week. Call 859-323-6021 and follow the prompts for the Outpatient Clinic.

The Ridge Behavioral System

Access to confidential consultation regarding the need for emergency psychiatric services is available to 24 hours per day, seven days a week. The house staff officer is to call 859-268-6400 and ask for the Assessment Office and identify oneself as a UK resident/fellow needing immediate evaluation.

Save the Dates

STRAW 4:
Basic & Clinical Principles of Cerebrovascular Disease

April 19-20, 2023  Lexington, KY

Stroke Translational Research Advancement Workshop
Hosted by UK Center for Advanced Translational Stroke Science (CATSS)

AAN Annual Meeting
Registration is open now
Boston, MA
April 22-27

Save the Date

Please join us at the University of Kentucky
Department of Neurology Alumni Reunion,
Tuesday, April 25, 7:00 PM—9:00PM
Tremont Room, Marriott Boston Copley Place,
Boston, MA

 Scan the
QR code
to RSVP

 College of
Medicine
Department of Neurology

 HealthCare  NORTON
HEALTHCARE

STROKE CARE NETWORK

SAVE THE DATE!

2023

SCN SUMMIT

September 28 - 29, 2023
Hyatt Regency Lexington, KY

Rachel Ward-Mitchell, RN, BSN, would like to invite you to the virtual epilepsy support group meeting every other week via Zoom. This meeting will replace the in-person monthly meeting for now. If you would like to join the meetings please contact Rachel at 859.218.5053 or through Central Kentucky Epilepsy Network <https://www.facebook.com/CentralKentuckyEpilepsySupportNetwork>.

Please submit contributions for the March
Newspaper to Lee Anne Rudd, (lee.rudd@uky.edu).