

A background image of a neural network with blue neurons and glowing orange nodes.

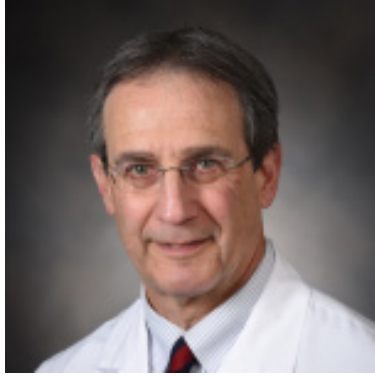
The Newspaper

**University of Kentucky
Department of Neurology
August 2022**

Table of Contents

1. Table of contents
2. [Publications/Presentations](#)
3. [Invited Speaker/Faculty Achievements](#)
4. [Faculty Achievements Cont./Faculty Kudos](#)
5. [Departmental Trainee of the Month](#)
6. [Departmental Trainee of the Month Cont./Staff Kudos](#)
7. [Welcome New Faculty/Seen and Heard](#)
8. [Philanthropy](#)
9. [Wellness and Support Resources](#)
10. [Save the Dates](#)

Publications

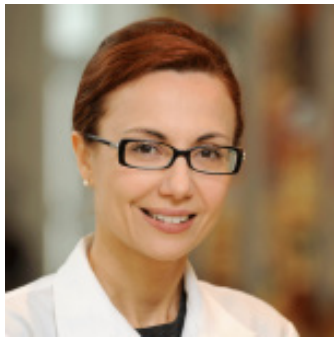


Tran PM, Tran LT, Zhu C, Chang T, Powers IP, Goldstein LB, Lichtman JH. Rural Residence and Anti-hypertensive Medication Use in US Stroke Survivors. *Journal of the American Heart Association*. 2022;11:e026678.



Sharoon Qaiser, MD, published 2 chapters in *Current Diagnosis & Treatment Pediatric Neurology* textbook: 2nd Edition to be released by January 2023. Chapter 13, "Migraine Equivalent or Episodic Syndromes in Children," and Chapter 14 "Primary Headache Disorders: Types and Management."

Presentations



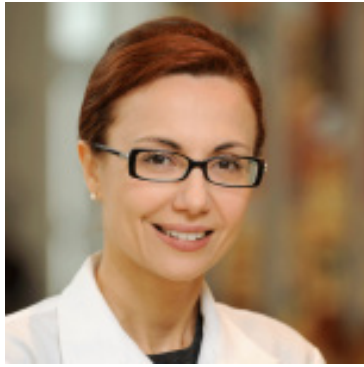
Meriem Bensalem-Owen, MD, presented and moderated the session, "Abnormal EEG for the American Clinical Neurophysiology Society (ACNS) Bootcamp."

Dr. Bensalem-Owen also spoke at the VEEG monitoring course at the American Neurodiagnostic Society.



Sharoon Qaiser, MD, led the training session for headaches in the medically fragile children, at the National Medically Complexed Care Training Workshop. This workshop is with foster parents from the tristate/commonwealth area.

Invited Speaker



Meriem Bensalem-Owen, MD, was invited as a speaker/panelist for the symposium, "Staffing Shortages During the Covid Pandemic" at the American Neurodiagnostic Society (ASET).

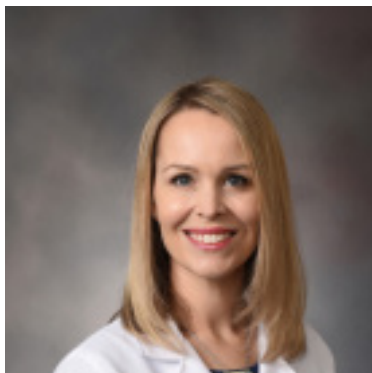


Ima Ebong, MD, was invited to speak at the 6th Annual Heartland Hospital Medicine Conference. The title of her talk was, "Seizures, Syncope and Spells: Inpatient Management of Transient Episodes of Loss of Consciousness."

Faculty Achievements



Vishakhadatta Mathur Kumaraswamy, MD, was selected to serve on the Education Committee with the American Association of Neuromuscular & Electrodiagnostic Medicine (AANEM).



Kimberly Jones, MD, was elected a Fellow of the American Academy of Neurology (FAAN).

Faculty Achievements Cont.



Dong "Dan" Han, PsyD, was elected Fellow of the Royal Society of Medicine, and Fellow of the Royal Society for Public Health. Dr. Han is among the last class of elected Fellows for the two Royal Societies under the patronage of her Majesty Queen Elizabeth II. [Click here](#) to read the story in UKNow.

Faculty Kudos



Ruta Yardi, MD, received a nice compliment from a patient's care-givers, "In over 20 years of bringing our daughter to UK, Dr. Yardi has helped her more than any other doctor. She is #1 in our book. We recommend her to everyone we meet with children having seizure problems."

Departmental Trainee of the Month - August



Collective Responsibility & Curiosity:

“She is one of the most efficient residents that I have worked with. She is always calm and can carry a very large volume service without difficulty. She knows her patients very well and makes clear plans for them. Her willingness to teach neuro Ophthalmology to other residents makes her a great asset to our program. She has published so many articles and I am so happy that she worked on many projects with me. So thankful that our residency program has chosen her as the chief resident. We will be truly blessed if she joins us as faculty.”

Excellence:

“She has been an excellent chief resident. Very hardworking and finely balances chief roles and clinical responsibilities. All the messages/emails/tasks by co-residents/staff/education office are addressed within 24 hours and sometimes makes me wonder how she multi-tasks. “

“She is a good listener and makes the expectations very clear with everyone. Once an issue is addressed, she follows up to make sure implemented solutions are working out at ground level. There were multiple times during in the last couple of months, when schedule had to be altered and strong teamwork by her and co-chiefs made it look simple but we all understand how much work goes into it. Above all, she is a strong advocate for our residents and is a strong asset to our program. “

Curiosity & Excellence

I have worked with her in multiple settings and have been very impressed with her intellectual curiosity, strong clinical acumen and taking ownership of the team. Along with top notch clinical skills, she always has patients and their families as her top priority. Working with her is so easy, because not only she is efficient, but she is 100% dependable. She has excellent communication and interpersonal skills, and treats everyone on the team with respect. I am amazed at her leadership skills since she took over as the chief resident in June. She works wonderfully well with her co-chiefs, is solution oriented, and executes beautifully. There were multiple instances over the summer with several residents sick with Covid or other illnesses, and Dr Kini would happily volunteer to cover for them. She would constantly check on the junior residents and the teams, reflecting true qualities of an able leader. Our program is truly lucky to have her as the chief. For her excellent patient centered care, for showing respect to everyone on the team, exceptional leadership skills and for the grace with which she manages the entire residency program, she deserves to be the departmental ROM as well as the GME ROM.

Collective Responsibility & Excellence

“She is reliable, responsible, has a great fund of knowledge, multitasking, and capable of managing complex cases/neurological emergencies efficiently”

Departmental Trainee of the Month - August Cont.

“Dr. Kini's performance was beyond her level of training. She was respectful, inquisitive, demonstrated clinical maturity.”

“Dr. Kini was extremely knowledgeable as a physician, hard working, and patient-centered while maintaining an educational approach with medical students. By the second day of neurology, I found myself comfortably conducting physical examinations including those in settings that I was previously unfamiliar with. She should be the golden-model for the ideal resident. Additionally, she passed the litmus test of “would I want this Dr. to take care of my family?” I would feel very comfortable recommending family members to her practice if at all possible in the future. 11/10 A++ resident.”

Staff Kudos



Heather Bailey, R.EEG Technologist, organized and directed annual courses on Video-EEG Monitoring at the American Neurodiagnostic Society. Saghi Tasori, R.EEG Technologist and her fellow EEG Technologist, Jessica Futson, represented UKHC and KNI at ASET with a table display.



Heather Bailey, MSHS, CCT, R.EEG Tech, received the award for directing the Courses at ASET.

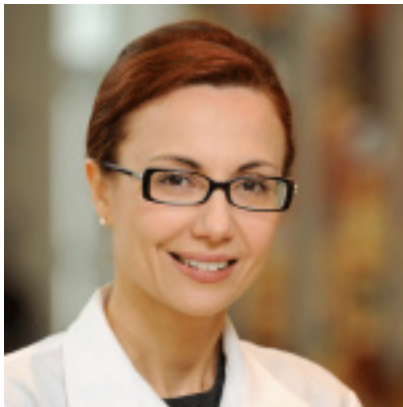
Welcome New Faculty



Anna Thamann, MD, graduated from the University of Louisville in 2011 with a degree in Biology before earning a Fulbright Grant to study in Cardiff, Wales. There, she obtained an MPhil in Medical Genetics, completing her thesis on renal disease in Tuberous Sclerosis. She then returned to Louisville to complete her MD in 2017 and stayed on for residency. Child Neurology was never on her radar but she was placed on a rotation and fell in love. She completed residency at University of Louisville in 2022 before joining UK after graduation. Anna loves the NICU and pediatric stroke, and plans to make these areas her focus clinically and academically.

Outside of work, Anna lives with her husband Nate. They've been together for over a decade; he has a degree in construction management but is known to suggest giving Keppra and "migs per kig" while Anna is on home call. They have a English Lab named Nancy, who feels entitled to constant attention. Anna most enjoys seeing live music, traveling, attempting to bake bread, perfecting her chocolate chip cookies, arranging flowers, and online thrift shopping.

Seen and Heard



Meriem Bensalem Owen, MD, was interviewed by International League Against Epilepsy (ILAE) regarding her career development. [Click here](#) to read or listen to the podcast.

Philanthropy

Robert J. Baumann, MD Resident Endowment Fund

The endowment was established in honor of Dr. Baumann's skills as a clinician and educator. It provides much needed funding for resident learning opportunities and research-related needs that are not otherwise supported.



Education is one of the core missions of our department - we are always looking for ways to improve the curriculum and educational opportunities we provide. Our goal is to continue to attract the highest caliber trainees to our programs, provide comprehensive neurological education, and increase the number of neurologists available in the commonwealth capable of providing cutting edge patient care and who are dedicated to life-long learning. In 2015, the Robert J. Baumann, MD Fund for Neurology Residents was established to help us support our goals for the neurology resident program. Dr. Baumann has been a familiar face among neurology residents at the University of Kentucky for four decades. Dr. Baumann truly embodies the

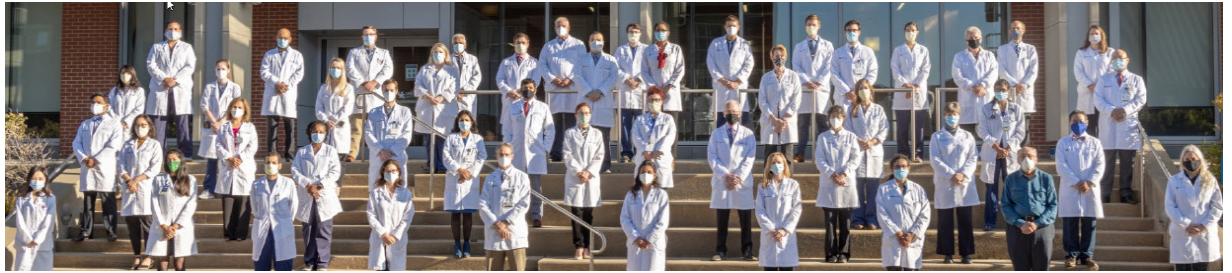
teaching mission of our department. His devotion to the field of medicine and training the next generation of providers is truly second to none.

In keeping with Dr. Baumann's passion for providing a strong medical education, the endowment will bolster the continued expansion of the Residency Program and ensure that our trainees have a well-rounded experience, positioning us to be among the best, and most sought out programs in the United States. Please consider contributing to the continued growth of our program and making an impact on future neurology residents by making a gift to the Robert J. Baumann MD Fund for Neurology Residents. All donations will be acknowledged and are tax deductible.



Donations can be made by contacting our Director of Philanthropy, Lisa Deaton Greer. (859-323-5374 or lisa.greer@uky.edu) or by clicking here <https://neurology.med.uky.edu/neurology-alumni>.

Wellness and Support Resources



[Click here](#) to find more helpful information on our Department of Neurology website.

UK Wellness Resources

Academic Resources offer a wide variety of online and in-person tips, tools, and suggestions.

Workplace Safety

UK HealthCare is committed to safety and well-being of patients, visitors, and staff in our enterprise. We take all forms of aggression, violence, and threats seriously. Sometimes frontline staff don't report these incidents, because they feel disruptive behavior is "part of the job". There is uncertainty about how and where to report.

Childcare

Several childcare facilities are located on or adjacent to the UK campus. Please note that some of these programs have a 9-10 month waiting list, so if you are interested, please talk to the directors as early as possible.

Financial Health

You and your family have access to live financial experts for guidance on financial questions, big or small.

Diversity and Inclusion

As healthcare providers, we have an obligation to do no harm. But our obligations go further to prevent harm from befalling others because of our inaction or silence.

Spiritual

Various resources are available for spiritual support through the GME program.

Abuse Response and Reporting

For procedures to report abuse, and for details of patient rights, click the title.

The Vicarious Trauma Toolkit

The *Vicarious Trauma Toolkit* (VTT) was developed on the premise that exposure to the traumatic experiences of other people—known as vicarious trauma—is an inevitable occupational challenge for the fields of victim services, emergency medical services, fire services, law enforcement, and other allied professionals; however, organizations can mitigate the potentially negative effects of trauma exposure by becoming vicarious trauma-informed.

Well-Being

The University of Kentucky GME Wellness In Training Committee is devoted to helping GME learners achieve their highest potential through the integration of the physical, social, emotional, environmental and economic aspects of wellness.

Physician Support Line

This is a peer-to-peer support line for physicians by physicians that is available to US based DO / MD / International equivalents at the attending, fellow, resident, intern, medical student, or research level. Any discussions are confidential and protected.

Lexington Medical Society Physician Wellness Program

Services include individual counseling, couples/family sessions, and sessions with spouse/partners alone. These confidential and free counseling services are available to anyone.

UK Work-Life Counseling

Free and confidential counseling for life stress, work performance, substance abuse concerns, and mental health.

UK REFER Program

A Family Center Counseling service provided as a benefit to UK employees that focuses on personal, couple, and/or family concerns.

Emergent Psychiatry Services

UK Department of Psychiatry Outpatient Clinic Access to confidential consultation is available through the UK Outpatient Clinic during business hours, five days per week. Call 859-323-6021 and follow the prompts for the Outpatient Clinic.

The Ridge Behavioral System

Access to confidential consultation regarding the need for emergency psychiatric services is available to 24 hours per day, seven days a week. The house staff officer is to call 859-268-6400 and ask for the Assessment Office and identify oneself as a UK resident/fellow needing immediate evaluation.

Save the Dates



American Heart Association.

Professional Heart Daily

International Stroke Conference 2023
Sessions: February 8-10, 2023
Dallas, TX + Virtual

Rachel Ward-Mitchell, RN, BSN, would like to invite you to the virtual epilepsy support group meeting every other week via Zoom. This meeting will replace the in-person monthly meeting for now. If you would like to join the meetings please contact Rachel at 859.218.5053 or through Central Kentucky Epilepsy Network <https://www.facebook.com/CentralKentuckyEpilepsySupportNetwork>.

Please submit contributions for the September
Newspaper to Lee Anne Rudd, (lee.rudd@uky.edu).