



# *The Newspaper*

**University of Kentucky  
Department of Neurology  
November/December 2022**

## **Table of Contents**

1. Table of Contents
2. [Publications](#)
3. [Publications Cont.](#)
4. [Invited Speaker/Faculty Achievements/Headache Fellow Achievement](#)
5. [Faculty Kudos/Seen and Heard/Welcome](#)
6. [Philanthropy](#)
7. [Wellness and Support Resources](#)
8. [Events](#)
9. [Events Cont.](#)
10. [Save the Dates](#)

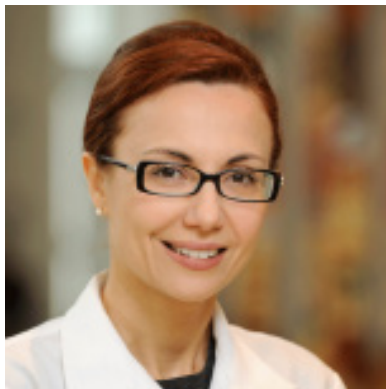
## Publications



Tsien C, Pugh SL, Dicker AP,... Villano JL, et al. NRG Oncology/RTOG1205: A Randomized Phase II Trial of Concurrent Bevacizumab and Reirradiation Versus Bevacizumab Alone as Treatment for Recurrent Glioblastoma. *J Clin Oncol*. 2022 Oct. Online ahead of print.

Miller RM, Hutchcraft ML,... Villano JL, et al. Molecular Tumor Board-Assisted Care in an Advanced Cancer Population: Results of a Phase II Clinical Trial. *JCO Precis Oncol*. 2022 Aug;6:32100524.

Liau LM, Ashkan K, Brem S,... Villano JL, et al. Association of Autologous Tumor Lysate-Loaded Dendritic Cell Vaccination With Extension of Survival Among Patients With Newly Diagnosed and Recurrent Glioblastoma: A Phase 3 Prospective Externally Controlled Cohort Trial. *JAMA Oncol*. 2022 Nov 17;e225370.



Karakis I, Liu L, Bensalem-Owen M, Laroche S, Lopez J, Schmitt J, Nuwer M, Lee L, Rubin D, Laughlin R, Sinha S. Clinical Neurophysiology Fellowship Program Directors Survey on a Standardized Fellowship Match Process: A Call for Action. *Journal of Clinical Neurophysiology*. Nov 2022;39 (7):561-566.

## Publications Cont.



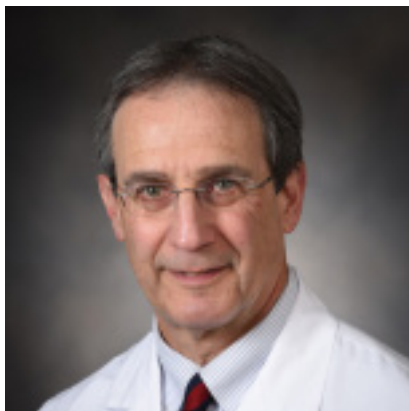
Paganoni S, Hendrix S, Dickson S,... Kasarskis EJ, et al. Effect of sodium phenylbutyrate/taurursodiol on tracheostomy/ventilation-free survival and hospitalisation in amyotrophic lateral sclerosis: long-term results from the CENTAUR trial. *J Neurol Neurosurg Psychiatry*. 2022. 93(8):871-875.

Mitsumoto H, Kasarskis EJ, Simmons Z. Hastening the Diagnosis of Amyotrophic Lateral Sclerosis. *Neurology*. 2022 May 16;10.1212.

Magid HS, Topol B, McGuire V, Hinman JA, Kasarskis EJ, Nelson LM. Cardiovascular Diseases, Medications, and ALS: A Population-Based Case-Control Study. *Neuroepidemiology*. 2022 Dec 8;1-10.

Tandan R, Levy EA, Howard DB, Hiser J, Kokinda N, Dey S, Kasarskis EJ. Body composition in amyotrophic lateral sclerosis subjects and its effect on disease progression and survival. *Am J Clin Nutr*. 2022 May 1;115(5):1378-1392.

Miller RG, Zhang R, Bracci PM, Azhir A, Barohn R, Bedlack R, Benatar M, Berry JD, Cudkowicz M, Kasarskis EJ, Mitsumoto H, Manousakis G, Walk D, Oskarsson B, Shefner J, McGrath MS. Phase 2B randomized controlled trial of NP001 in amyotrophic lateral sclerosis: Pre-specified and post hoc analyses. *Muscle Nerve*. 2022 Jul;66(1):39-49.



Zhu C, Tran PM, Leifheit EC, Spatz ES, Dreyer RP, Nyhan K, Wang SY, Goldstein LB, Lichtman JH. The association of marital/partner status with patient-reported health outcomes following acute myocardial infarction or stroke: Protocol for a systematic review and meta-analysis. *PLOS ONE*. 2022 Nov 15;17(11):e0267771.

## Invited Speaker

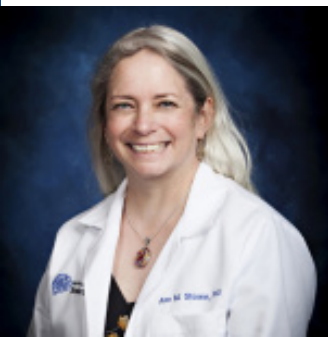


Padmaja Sudhakar, MD, was invited to give 2 presentations at the Indian Neurophthalmology Society Annual Meeting. Dr. Sudhakar's Key-note presentation was entitled, "Visual aura of migraine." Her other presentation was entitled, "Pediatric idiopathic intracranial hypertension."

## Faculty Achievements



Sally Mathias, MD, was appointed to the ABRET EEG Laboratory Accreditation Board (LAB-EEG) for a 3 year term.



Ann Stowe, PhD, was elected as an At-Large Member of Faculty Council.

## Headache Fellow Achievement



Dana Ionel, DO, passed the ABPN boards. Congratulations!



## Faculty Kudos



Ima Ebong, MD, received a very nice note from a patient. " Thank you very much for all the advice and help you have given me. I'm very grateful to have you as my Neurologist. I appreciate your compassion and empathy, not many show those qualities to a newer patient but you made me feel at ease. You're not only a great Neurologist, you are also a beautiful and genuine healer."

## Seen and Heard



Dong "Dan" Han, PsyD, was a guest speaker on Dr. Sanjay Gupta's Chasing Life Podcast. Dr. Han discussed neuropsychological methods to address global health and food sustainability through neurogastronomy.

## Welcome



Tori Therrien, PA-C

"Hello all! I am so excited to start working within the Sanders-Brown Memory Disorder clinic. Here is just a little bit about me. I'm from St. Louis and I went to the University of Missouri where I obtained my Bachelor's degree in Health Science. I worked as an EMT and a scribe before I went to The University of the Cumberlands for PA school. In my free time, I enjoy yoga, trying new restaurants, and volunteering at Central Kentucky Riding for Hope. Thank you all for being so welcoming. I can already tell I have joined a great team."

## Philanthropy

### Robert J. Baumann, MD Resident Endowment Fund

The endowment was established in honor of Dr. Baumann's skills as a clinician and educator. It provides much needed funding for resident learning opportunities and research-related needs that are not otherwise supported.



Education is one of the core missions of our department - we are always looking for ways to improve the curriculum and educational opportunities we provide. Our goal is to continue to attract the highest caliber trainees to our programs, provide comprehensive neurological education, and increase the number of neurologists available in the commonwealth capable of providing cutting edge patient care and who are dedicated to life-long learning. In 2015, the Robert J. Baumann, MD Fund for Neurology Residents was established to help us support our goals for the neurology resident program. Dr. Baumann has been a familiar face among neurology residents at the University of Kentucky for four decades. Dr. Baumann truly embodies the

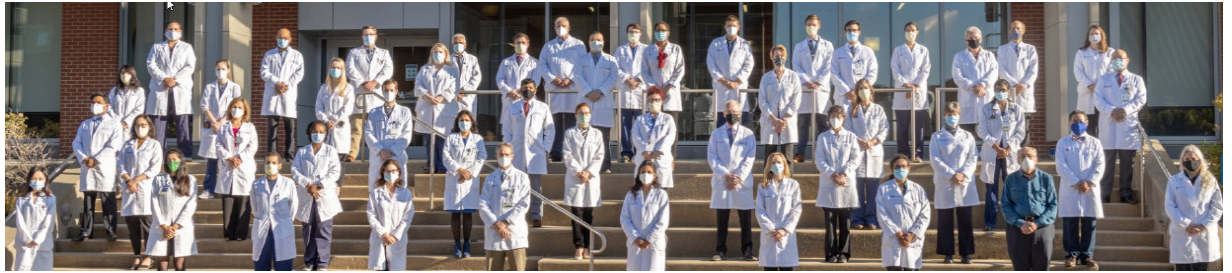
teaching mission of our department. His devotion to the field of medicine and training the next generation of providers is truly second to none.

In keeping with Dr. Baumann's passion for providing a strong medical education, the endowment will bolster the continued expansion of the Residency Program and ensure that our trainees have a well-rounded experience, positioning us to be among the best, and most sought out programs in the United States. Please consider contributing to the continued growth of our program and making an impact on future neurology residents by making a gift to the Robert J. Baumann MD Fund for Neurology Residents. All donations will be acknowledged and are tax deductible.



Donations can be made by contacting our Director of Philanthropy, Lisa Deaton Greer. (859-323-5374 or [lisa.greer@uky.edu](mailto:lisa.greer@uky.edu)) or by clicking here <https://neurology.med.uky.edu/neurology-alumni>.

# Wellness and Support Resources



[Click here](#) to find more helpful information on our Department of Neurology website.

## UK Wellness Resources

Academic Resources offer a wide variety of online and in-person tips, tools, and suggestions.

## Workplace Safety

UK HealthCare is committed to safety and well-being of patients, visitors, and staff in our enterprise. We take all forms of aggression, violence, and threats seriously. Sometimes frontline staff don't report these incidents, because they feel disruptive behavior is "part of the job". There is uncertainty about how and where to report.

## Childcare

Several childcare facilities are located on or adjacent to the UK campus. Please note that some of these programs have a 9-10 month waiting list, so if you are interested, please talk to the directors as early as possible.

## Financial Health

You and your family have access to live financial experts for guidance on financial questions, big or small.

## Diversity and Inclusion

As healthcare providers, we have an obligation to do no harm. But our obligations go further to prevent harm from befalling others because of our inaction or silence.

## Spiritual

Various resources are available for spiritual support through the GME program.

## Abuse Response and Reporting

For procedures to report abuse, and for details of patient rights, click the title.

## The Vicarious Trauma Toolkit

The *Vicarious Trauma Toolkit* (VTT) was developed on the premise that exposure to the traumatic experiences of other people—known as vicarious trauma—is an inevitable occupational challenge for the fields of victim services, emergency medical services, fire services, law enforcement, and other allied professionals; however, organizations can mitigate the potentially negative effects of trauma exposure by becoming vicarious trauma-informed.

## Well-Being

The University of Kentucky GME Wellness In Training Committee is devoted to helping GME learners achieve their highest potential through the integration of the physical, social, emotional, environmental and economic aspects of wellness.

## Physician Support Line

This is a peer-to-peer support line for physicians by physicians that is available to US based DO / MD / International equivalents at the attending, fellow, resident, intern, medical student, or research level. Any discussions are confidential and protected.

## Lexington Medical Society Physician Wellness Program

Services include individual counseling, couples/family sessions, and sessions with spouse/partners alone. These confidential and free counseling services are available to anyone.

## UK Work-Life Counseling

Free and confidential counseling for life stress, work performance, substance abuse concerns, and mental health.

## UK REFER Program

A Family Center Counseling service provided as a benefit to UK employees that focuses on personal, couple, and/or family concerns.

## Emergent Psychiatry Services

UK Department of Psychiatry Outpatient Clinic Access to confidential consultation is available through the UK Outpatient Clinic during business hours, five days per week. Call 859-323-6021 and follow the prompts for the Outpatient Clinic.

## The Ridge Behavioral System

Access to confidential consultation regarding the need for emergency psychiatric services is available to 24 hours per day, seven days a week. The house staff officer is to call 859-268-6400 and ask for the Assessment Office and identify oneself as a UK resident/fellow needing immediate evaluation.



## Events

### Epilepsy Awareness Month



Meriem Bensalem-Owen, MD, and members of the epilepsy community met with Governor Beshear. He signed the proclamation that November is Epilepsy Awareness Month in Kentucky.

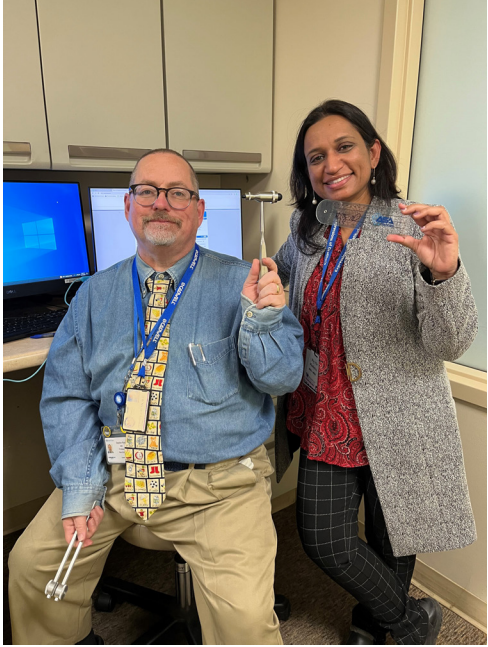


Stephanie Gerrell, RN, CNML, Janice Bugg, ADN, BSN, Rachel Ward-Mitchell, RN, BSN, Sid Kapoor, MD, & Meriem Bensalem-Owen, MD, members of UKHC and KNI met with Mayor Gorton who proclaimed November Epilepsy Awareness month in Lexington.



Events Cont.

Dr. Ryan's Retirement Festivities

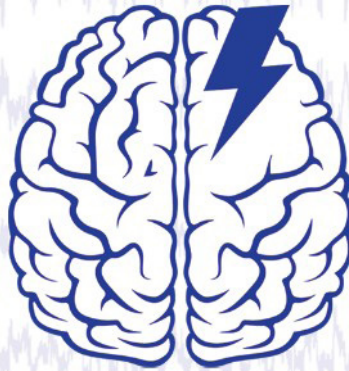


**Save the Dates**

## **International Stroke Conference**

**February 8-10, 2023**  
**Dallas, TX + Virtual**

**STRAW 4:**  
Basic & Clinical Principles of  
Cerebrovascular Disease



**April 19-20, 2023**      **Lexington, KY**  
Stroke Translational Research Advancement Workshop  
Hosted by UK Center for Advanced Translational Stroke Science (CATSS)

**AAN Annual Meeting**  
**Registration is open now**  
**Boston, MA**  
**April 22-27**

Rachel Ward-Mitchell, RN, BSN, would like to invite you to the virtual epilepsy support group meeting every other week via Zoom. This meeting will replace the in-person monthly meeting for now. If you would like to join the meetings please contact Rachel at 859.218.5053 or through Central Kentucky Epilepsy Network <https://www.facebook.com/CentralKentuckyEpilepsySupportNetwork>.

Please submit contributions for the January  
Newspaper to Lee Anne Rudd, ([lee.rudd@uky.edu](mailto:lee.rudd@uky.edu)).