

THE CAH DOWNLOAD

Everything YOU need to know to make your Critical Access Hospital work for you and your patients

The Kentucky Office of Rural Health (KORH) has been tasked with keeping you up-to-date on anything CAH-related, including funding opportunities, policy changes, and more!

Check out The Download below to see what's going on for CAHs across the Commonwealth!

Register for a Rural Emergency Hospital Conversion Educational webinar.



Kentucky CAH Revenue Cycle Network Meeting

Join us for the next virtual KY CAH Revenue Cycle Network meeting on Thursday, Nov. 16 @ 3pm ET!

Who should attend the meetings?

- Revenue cycle leaders responsible for the accounts receivable (AR) of the CAH
- Hospital CFO/controller who monitors AR activity
- Leaders responsible for chargemaster/coding activities

Recent Topics Discussed:

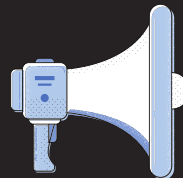
- Pricing transparency and the 2024 proposed changes
- Medicare Advantage
- Front End Activities and best practices

Message matt.coleman@uky.edu to register for the meeting.

EDTC reports due to KORH by Nov. 1, 2023

Emergency Department Transfer Communication (EDTC) reports can be sent to KORH Director [Matt Coleman](#) on Nov. 1, 2023.

[Click here for more info!](#)



Look out for a National CAH Inventory & Assessment Resource survey coming soon!

The Kentucky Office of Rural Health (KORH), established in 1991, is a federal-state partnership authorized by federal legislation. The mission of the KORH is to support the health and well-being of Kentuckians by promoting access to rural health services. The KORH assists clinicians, administrators and consumers find ways to improve communications, finances and access to quality health care while ensuring that funding agencies and policymakers are made aware of the needs of rural communities. The KORH receives support from the Federal Office of Rural Health Policy in the Health Resources and Services Administration of the U.S. Department of Health and Human Services.

Thank you for reading our newsletter. If anyone else from your organization would like to receive this newsletter, please contact us!

Connect with us!



facebook.com/KentuckyOfficeofRuralHealth



matt.coleman@uky.edu